
Introduction to aggregate data

Richard Wiseman (Jisc, Manchester)

7 December 2017

UK Data Service
Census Support



Data about areas

- known as aggregate data
- counts of people, households, etc. with particular combinations characteristics for an area
- areas vary from large to very small
- example:
number of females aged 30-34 who are married and live in private rented accommodation in the county of Devon









Axminster
Town

Axminster
Rural

Broadclyst

Beer and Branscombe



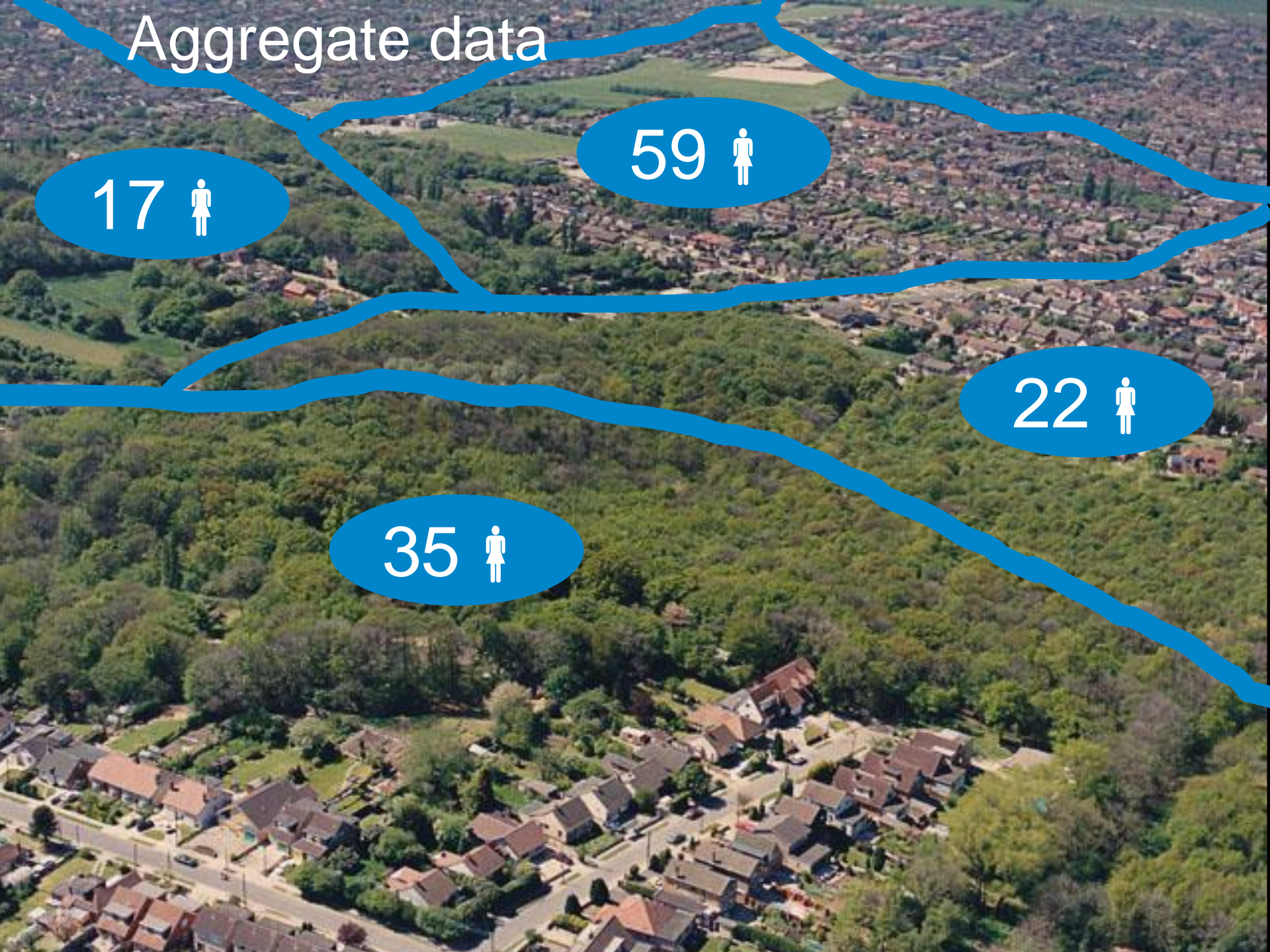
Aggregate data

17 ♀

59 ♀

22 ♀

35 ♀



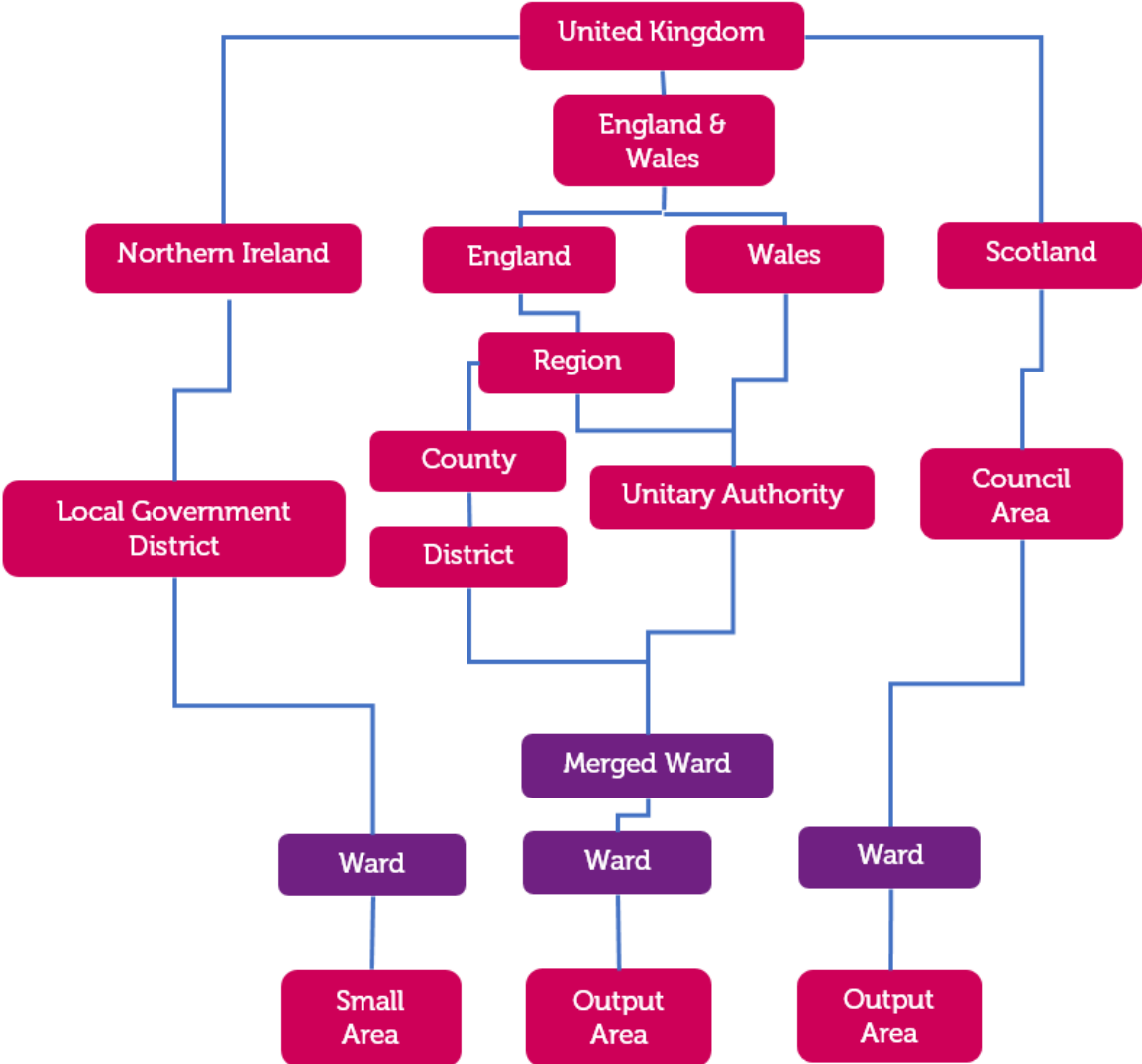
Example data

Age : 16 to 24 years old - Religion (England and Wales) :
Muslim - Unit : People

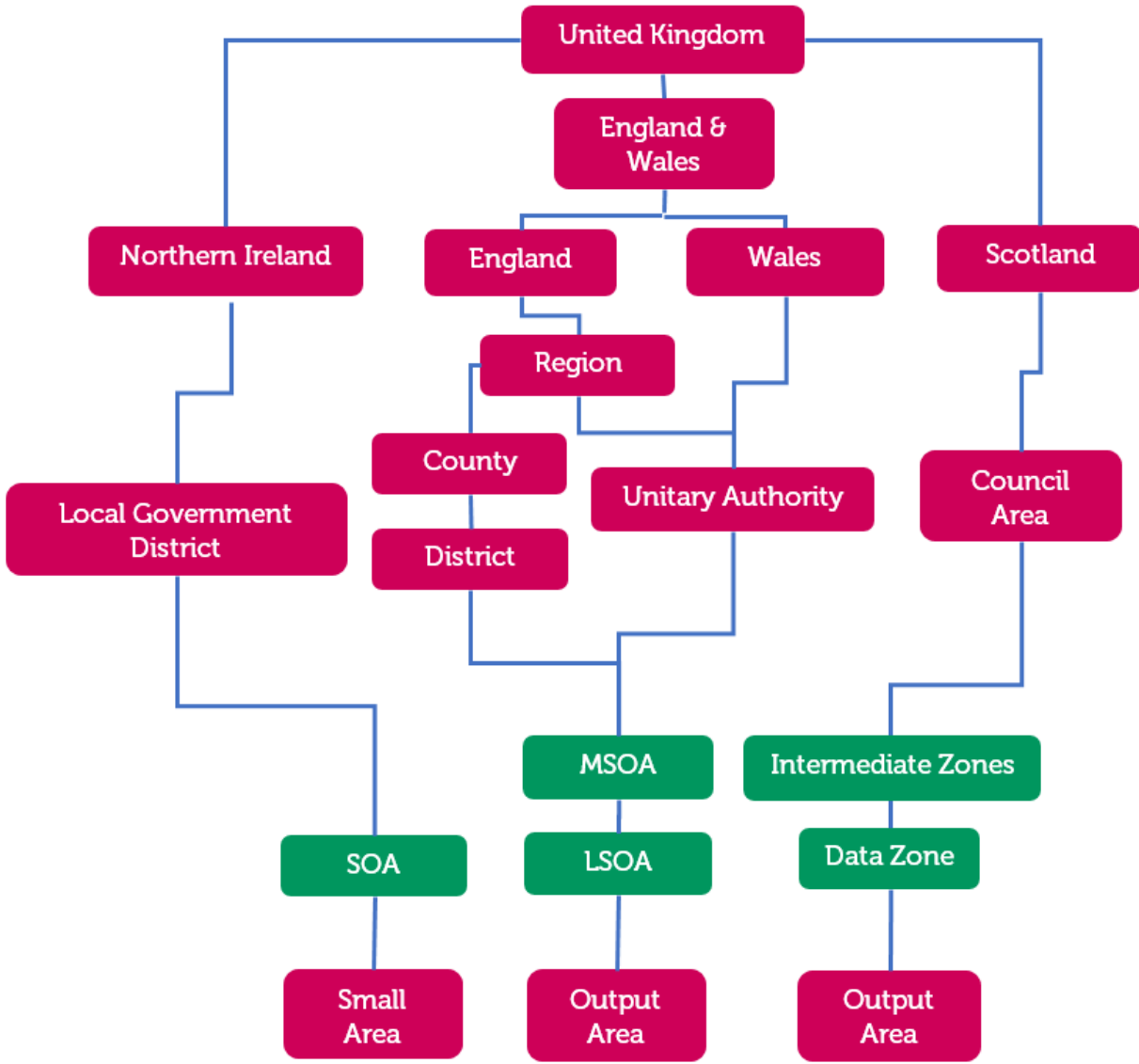
CDU_ID	GEOGRAPHY	GEOGRAPHY LABEL	GEOGRAPHY TYPE	F79175	F79176	F79177	F79178	F79179	F79180	F79181	F79182	F79183
				Age : 16 to 24 years old - Religion (England and Wales) : Muslim - Unit : People	Age : 16 to 24 years old - Religion (England and Wales) : Muslim - Unit : People	Age : 16 to 24 years old - Religion (England and Wales) : Muslim - Unit : People	Age : 16 to 24 years old - Religion (England and Wales) : Muslim - Unit : People	Age : 16 to 24 years old - Religion (England and Wales) : Muslim - Unit : People	Age : 16 to 24 years old - Religion (England and Wales) : Muslim - Unit : People	Age : 16 to 24 years old - Religion (England and Wales) : Muslim - Unit : People	Age : 16 to 24 years old - Religion (England and Wales) : Muslim - Unit : People	Age : 16 to 24 years old - Religion (England and Wales) : Muslim - Unit : People
10251	16UB	16UB : Allerdale	Districts	6803	0	6	0	10	0	15	1038	504
10252	16UC	16UC : Barrow-in-Furness	Districts	4972	3	0	3	23	0	10	1131	500
10253	16UD	16UD : Carlisle	Districts	7395	14	3	3	48	6	15	1857	827
10254	16UE	16UE : Copeland	Districts	5514	6	9	3	12	0	3	684	424
10255	16UF	16UF : Eden	Districts	3142	5	3	0	6	0	3	729	274
10256	16UG	16UG : South Lakeland	Districts	6073	17	6	3	3	3	13	1810	648



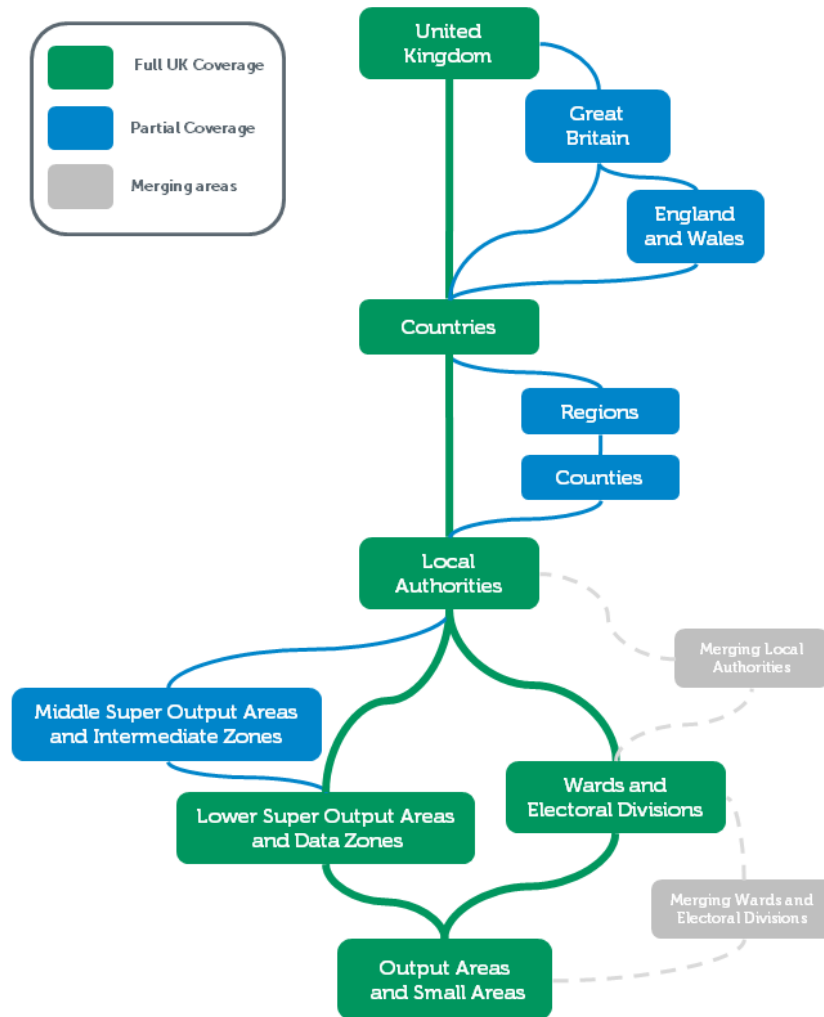
UK administrative geographies



UK statistical geographies



Admin and statistical geography layers



UK Data Service
Census Support



United Kingdom

Data under [Open Government License \(OGL\) version 1.0](#)



UK Data Service
Census Support



Nations

Data under [Open Government License \(OGL\) version 1.0](#)



UK Data Service
Census Support



Regions

Data under [Open Government License \(OGL\) version 1.0](#)

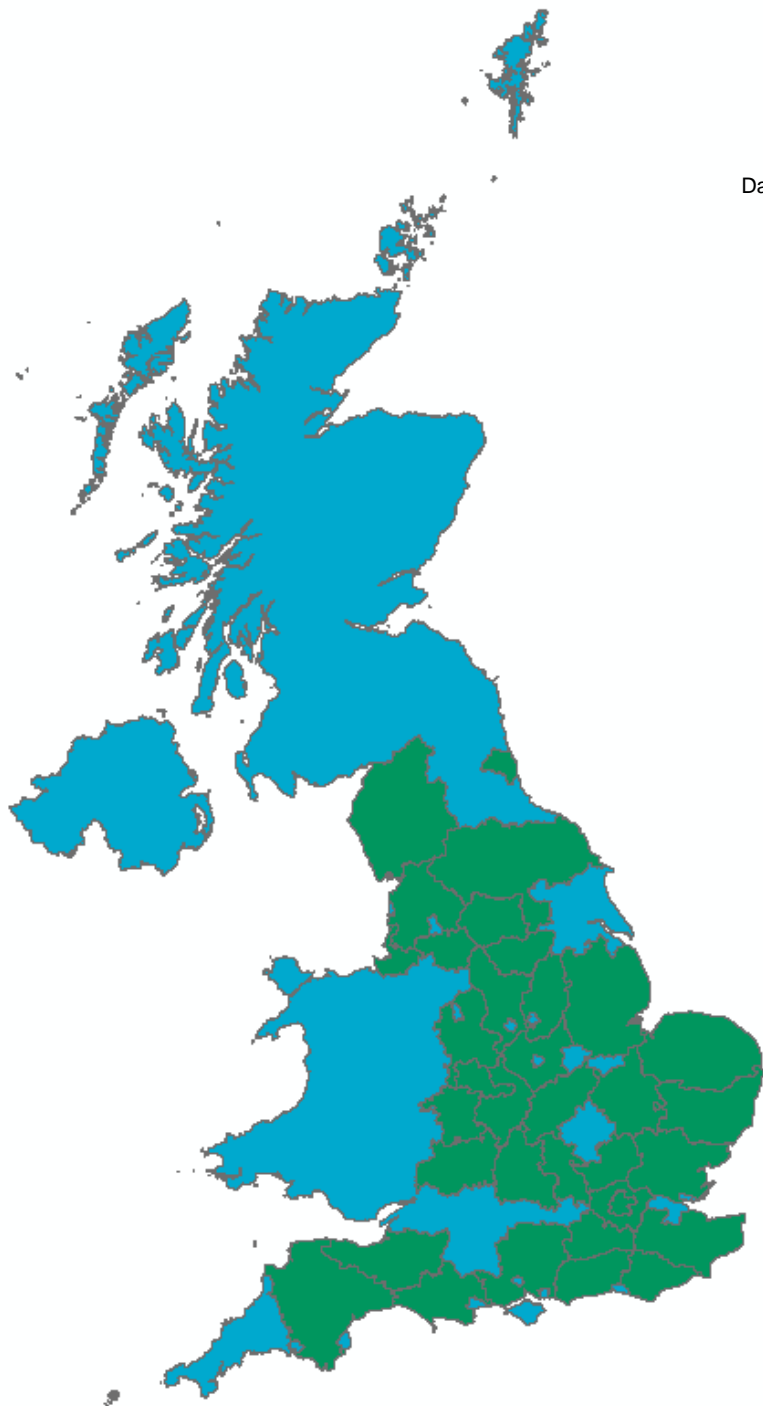


UK Data Service
Census Support



Counties

Data under [Open Government License \(OGL\) version 1.0](#)



UK Data Service
Census Support



District Layer

Data under [Open Government License \(OGL\) version 1.0](#)

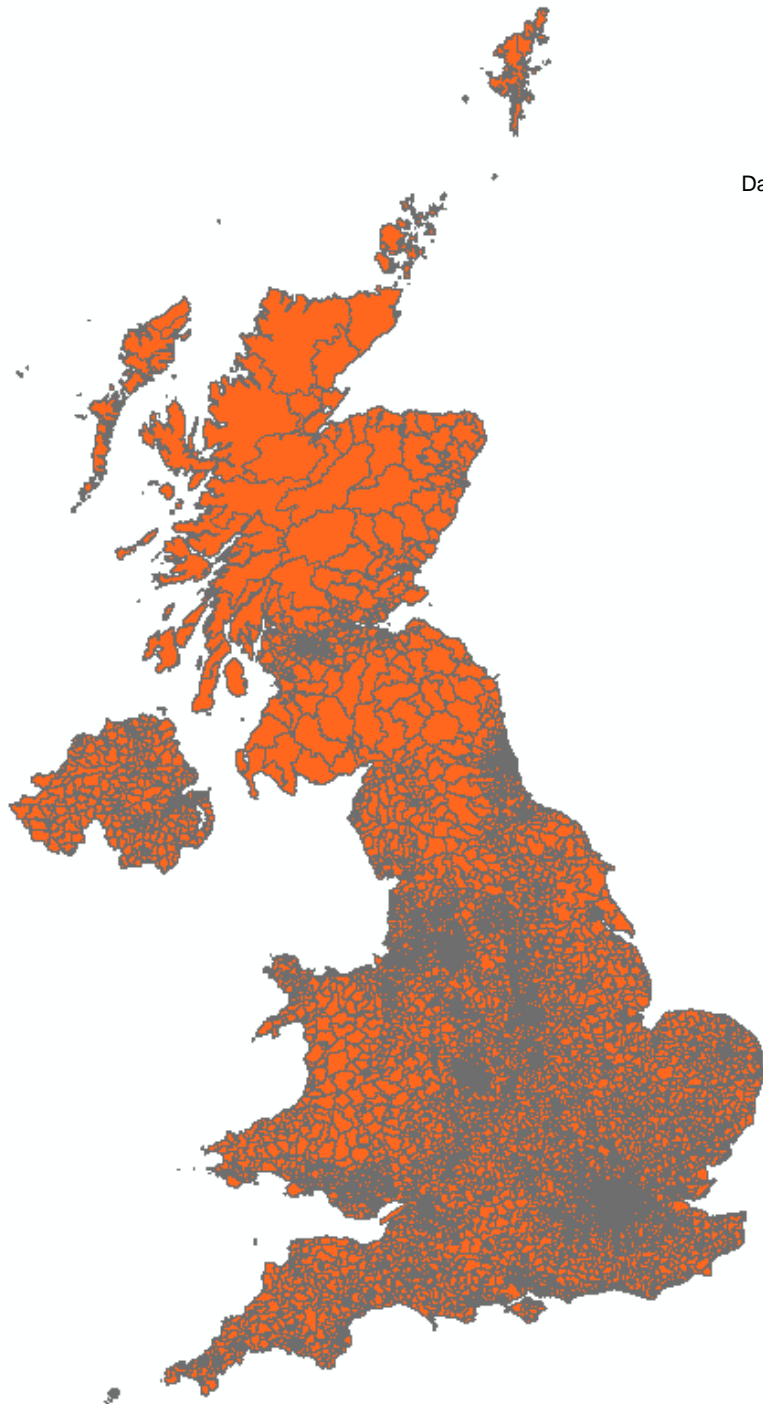


UK Data Service
Census Support



Ward Layer

Data under [Open Government License \(OGL\) version 1.0](#)

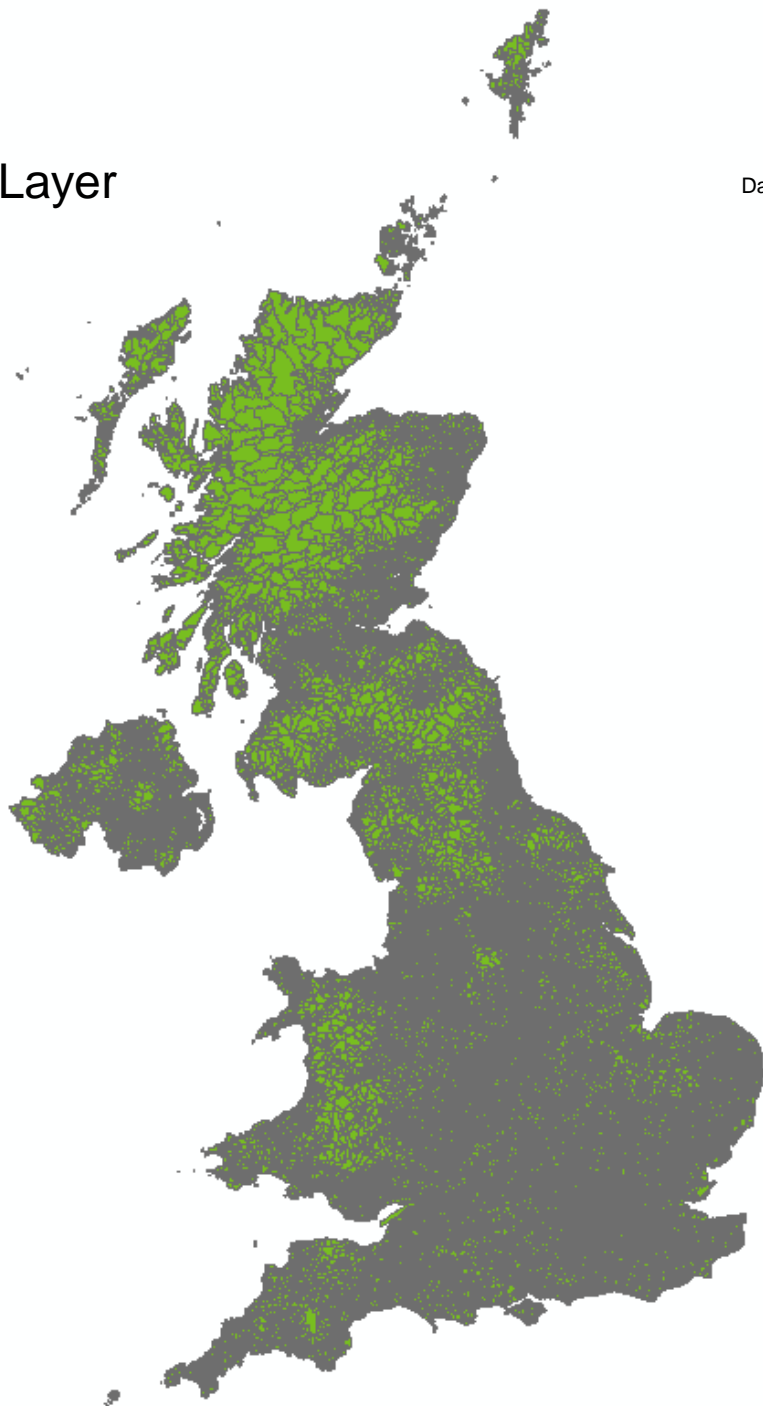


UK Data Service
Census Support



Output Area Layer

Data under [Open Government License \(OGL\) version 1.0](#)



UK Data Service
Census Support



Aggregate data

- 1971 – 2011 Census data
- Open data
- Trade-off detail geography / categories



All geographies

Age

- Total: Age
- Age under 16
- Age 16 to 49
- Age 50 to 64
- Age 65 and over

General health

- Total: General health
- Very good or good health
- Fair health
- Bad or very bad health

Tenure

- Total: Tenure
- Owned or shared ownership

+Owned

- Social rented
- Rented or living rent-free
- Private rented or living rent-free

Unit

- Persons

Higher geographies

Age

- Total: Age
- Age under 16
- Age 16 to 24
- Age 25 to 49
- Age 50 to 64
- Age 65 and over

General health

- Total: General health
- Very good or good health
- Fair health
- Bad or very bad health

Sex

- Total: Sex
- Males
- Females

Tenure

- Total: Tenure
- Owned or shared ownership
- ### +Owned
- Social rented
- Rented or living rent-free
- Private rented or living rent-free

Unit

- Persons

Working with census aggregate information

- All values are all estimates!
 - Imputation and record swapping
- Making comparisons
 - Use denominators to compare rates
 - Use identifiers
 - Areas
 - Cells and intersections
 - Variations within and between censuses
 - Match to non-census data
- Expect gaps in data from InFuse



Smaller areas

- If interested in Ward, LSOA, Output Area geographies, then less detail in categories



Area data coverage

Census	Coverage	Tool
2011	UK	InFuse
2001	UK	InFuse (E&W) Casweb
1991	UK	Casweb
1981	GB	Casweb
1971	GB	Casweb



Casweb

- casweb.ukdataservice.ac.uk
- 1971-2001 aggregate data
- select by table
- open to everyone



The screenshot shows the Casweb website interface. At the top left, it says "UK Data Service Census Support" with a logo of a stylized grid. The main heading is "Casweb" in a large, bold, blue font. To the right of the heading is a decorative graphic of several horizontal bars in various colors (yellow, orange, red, pink, blue, purple). Below the heading, there is a navigation menu on the left with a blue dot next to "Casweb Home Guide". The main content area features the heading "Casweb provides access to UK census aggregate data" followed by a paragraph: "We provides access to England, Wales, and Scotland 2001, 1991, 1981, 1971 data and 2001 and 1991 Northern Ireland data." Below this, it states "Casweb will NOT provide access to 2011 Census data." and lists two bullet points: "England and Wales 2011 data is available via [InFuse](#)" and "Take a look at our [2011 Census plans](#) page for more information". At the bottom, there is a red button with the text "Start Casweb".

UK Data Service
Census Support

Casweb

- Casweb Home Guide

Casweb provides access to UK census aggregate data

We provides access to England, Wales, and Scotland 2001, 1991, 1981, 1971 data and 2001 and 1991 Northern Ireland data.

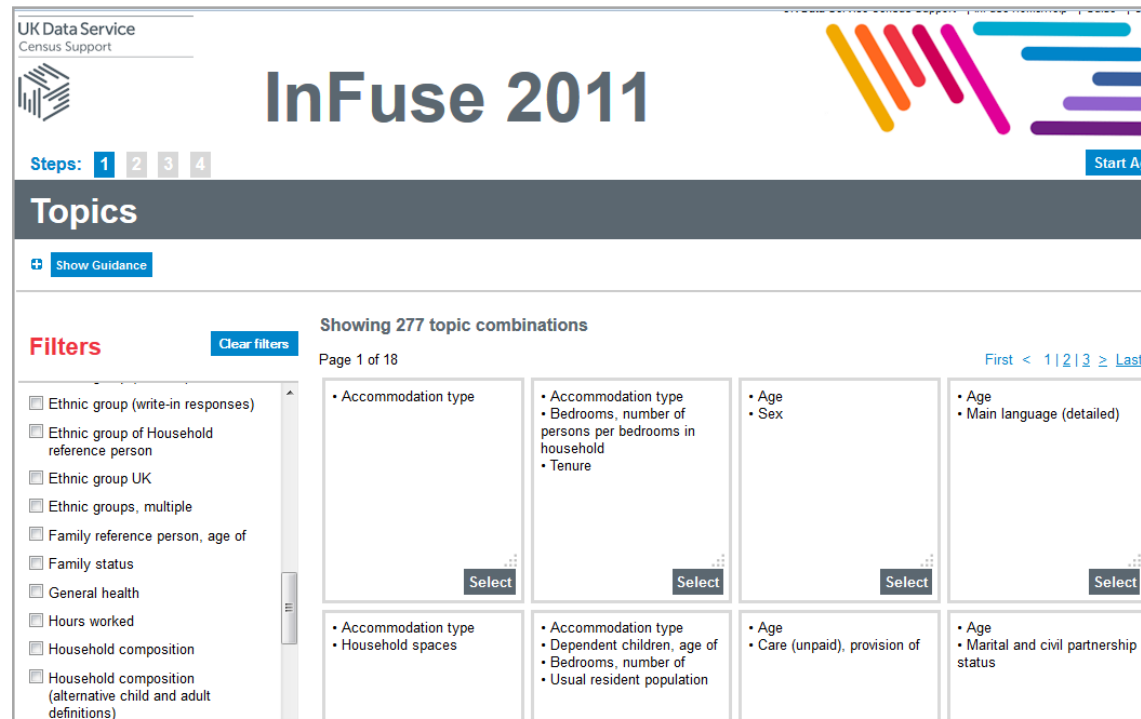
Casweb will NOT provide access to 2011 Census data.

- England and Wales 2011 data is available via [InFuse](#)
- Take a look at our [2011 Census plans](#) page for more information

[Start Casweb](#)

InFuse

- infuse.ukdataservice.ac.uk
- 2011 UK aggregate data
- 2001 England and Wales aggregate data
- integrated metadata
- select by topic or geography
- makes it easy
- open to everyone



The screenshot displays the InFuse 2011 web interface. At the top, it says "UK Data Service Census Support" and "InFuse 2011". Below this, there are "Steps: 1 2 3 4" and a "Show Guidance" button. The main section is titled "Topics" and shows "Showing 277 topic combinations" on "Page 1 of 18". On the left, there is a "Filters" section with a "Clear filters" button and a list of filter options, including "Ethnic group (write-in responses)", "Ethnic group of Household reference person", "Ethnic group UK", "Ethnic groups, multiple", "Family reference person, age of", "Family status", "General health", "Hours worked", "Household composition", and "Household composition (alternative child and adult definitions)". The main content area displays a grid of topic combinations, each with a "Select" button. The combinations include:

- Accommodation type
- Accommodation type, Bedrooms, number of persons per bedrooms in household, Tenure
- Age, Sex
- Age, Main language (detailed)
- Accommodation type, Household spaces
- Accommodation type, Dependent children, age of, Bedrooms, number of, Usual resident population
- Age, Care (unpaid), provision of
- Age, Marital and civil partnership status

Demo

- Website: ukdataservice.ac.uk
- InFuse: infuse.ukdataservice.ac.uk



Questions

ukdataservice.ac.uk/help/

Follow us at:

- UKDATASERVICE@JISCMAIL.AC.UK
- twitter.com/UKDataService
- www.facebook.com/UKDataService

UK Data Archive
Census Support

