
An Introduction to the UK Data Service

Richard Wiseman
Sarah King-Hele

University of Nottingham
28 January 2019



Overview of the day

- Overview of UKDS
- UKDS website demos: finding and exploring data online
- Questions
- Practical: use the UKDS website to find and explore data



What is the UK Data Service?

- A comprehensive resource funded by the ESRC
- A single point of access to a wide range of secondary social science data
- Support, training and guidance



Who is it for?

- Academic researchers and students
- Government analysts
- Charities and foundations
- Business consultants
- Independent research centres
- Think tanks





Register / Login

Explore the UK's largest collection of social, economic and population data resources.

Search data [input field] [magnifying glass icon]

About the UK Data Service



Guides and resources

Dataset guides

Topic guides

Methods and software guides

Guides to exploring online

See more >



Video tutorials

See our growing range of training videos

See data from all over the world

Browse our data map

Data types

Census data

International macrodata

Longitudinal studies

Qualitative/mixed methods

UK surveys



Professor Michaela Benzeval

The Director of Understanding Society discusses the impact of making data available through the UK Data Service



Featured data

Encouraging healthy lifestyles in young people

What is the link between

Latest data

Small Business Survey, 2014

Second Longitudinal Study of Young People in England: Wave 1, 2013: Safe Room Access

Second Longitudinal Study of Young People in England: Wave 1, 2013: Secure Access





[Home](#) > [Discover data](#) > [Key data](#)

Key data

Browse our most popular datasets, by data type.

UK surveys	Cross-national surveys	Longitudinal studies	International macrodata	Census data
Business microdata	Qualitative / mixed methods			

SHARE

These UK surveys can be used to produce national estimates.

They can all be used to describe a population at one point of time and most can be used to compare populations at more than one time point. Many are large surveys that are used to inform policy.

- [Discover data](#) from UK surveys
- [Discover case studies](#) relating to UK surveys

You can also visit our [UK Data Service UK surveys community forum](#) for peer-to-peer support and information on using UK surveys data focusing on UK health surveys.

Annual Population Survey

The Annual Population Survey (APS) combines data from the Labour Force Survey (LFS) and national boosts. Datasets contain 12 months of data and responses from 155,000 households and 360,000 people. It thus improves intercensal monitoring of key variables for a range of policy purposes.

British Social Attitudes

This National Centre for Social Research (NatCen) survey tracks people's changing

- [About our data](#)
- [Key data](#)
- [Data by theme](#)
- [Data by geography](#)
- [Open data](#)
- [How to access](#)
- [Other providers](#)
- [Explore online](#)
- [Data access policy](#)
- [Thesauri](#)

LOGIN / REGISTER

DISCOVER UK DATA SERVICE

Data Website



OECD DATASETS NOW OPEN TO EVERYONE

We are delighted to announce that the Organisation for Economic Co-operation and Development (OECD) datasets are now available to users without the need for registration or authentication.



QUICK ACCESS TO

[Variable and question bank](#)

[Dataset guides in Discover](#)

RELATED LINKS

[UK surveys: ONS: Surveys](#)

Types of data collections

- Survey microdata
 - [Cross-sectional](#)
 - [Panel / Longitudinal](#)
- Aggregate statistics
 - [International macrodata](#)
- [Census](#) data
 - [Aggregate](#) data for 1971 -2011
 - [Microdata](#) for 1961 - 2011
- [Qualitative and mixed methods data](#)



Sources of data

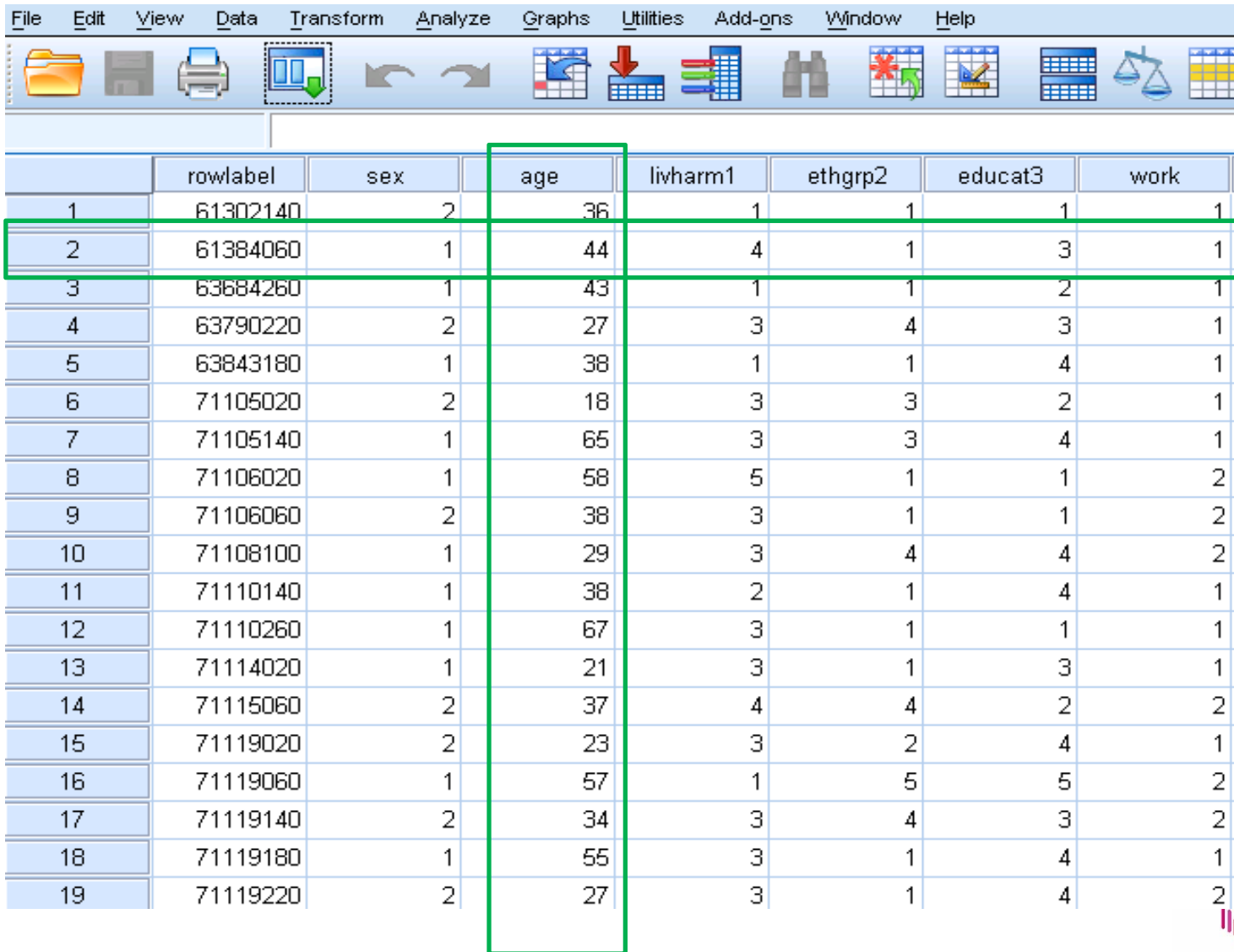
- Official agencies – mainly central government
- International government organisations
- Research institutions
- Individual academics - research grants
- Market research agencies
- Public records/historical sources



Survey microdata

- Individual or household level data which have been anonymised to prevent disclosure
- Need to be analysed using an analysis package like SPSS or Stata
- Very flexible as you can produce your own tables, populations and attributes

Survey microdata



The image shows a screenshot of a data analysis software interface. The menu bar includes File, Edit, View, Data, Transform, Analyze, Graphs, Utilities, Add-ons, Window, and Help. The toolbar contains various icons for file operations, data manipulation, and visualization. Below the toolbar is a data table with 19 rows and 8 columns. The 'age' column is highlighted with a green box.

	rowlabel	sex	age	livharm1	ethgrp2	educat3	work
1	61302140	2	36	1	1	1	1
2	61384060	1	44	4	1	3	1
3	63684260	1	43	1	1	2	1
4	63790220	2	27	3	4	3	1
5	63843180	1	38	1	1	4	1
6	71105020	2	18	3	3	2	1
7	71105140	1	65	3	3	4	1
8	71106020	1	58	5	1	1	2
9	71106060	2	38	3	1	1	2
10	71108100	1	29	3	4	4	2
11	71110140	1	38	2	1	4	1
12	71110260	1	67	3	1	1	1
13	71114020	1	21	3	1	3	1
14	71115060	2	37	4	4	2	2
15	71119020	2	23	3	2	4	1
16	71119060	1	57	1	5	5	2
17	71119140	2	34	3	4	3	2
18	71119180	1	55	3	1	4	1
19	71119220	2	27	3	1	4	2



Key data: [UK surveys](#)

- Labour Force Survey
- Annual Population Survey
- Health Surveys (England/Wales/Scotland)
- Expenditure and Food Survey/Living Costs and Food Survey
- Crime Survey for England and Wales
- Family Resources Survey
- ONS Omnibus/Opinions Survey
- General Household Survey/General Lifestyle Survey
- Citizenship Survey
- British Social Attitudes Survey

UK Surveys

- data about individuals or households
- often commissioned by the Government and conducted by the ONS or NatCen
- large sample sizes
- nationally-representative
- repeated cross-sectional surveys – a new sample of people every time the survey is run
- many surveys are repeated every year
- Well documented
- cover many topics including health, work, crime, social attitudes, family expenditure, living costs, housing etc.



Crime Survey for England and Wales (formerly the British Crime Survey)

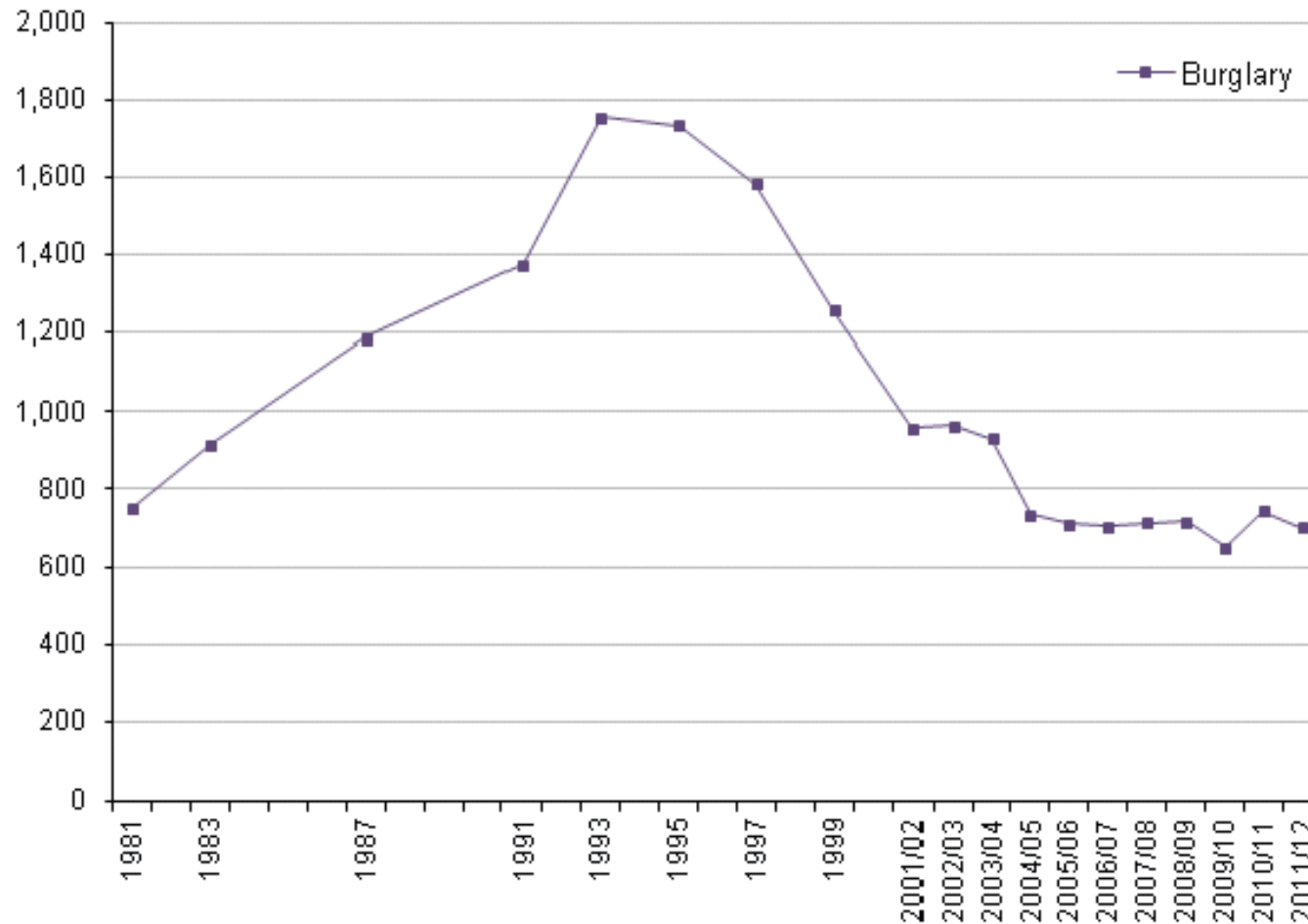
- **Topic: Experiences of crime**
 - Estimate levels of crime
 - How and why crime happens
- **Survey design**
 - Run since 1981
 - Annual survey since 2001/02



Trends in domestic burglary, 1981-2011/12

Crime Survey for England and Wales

Number of offences (thousands)



Longitudinal data

Similar to 'UK Surveys'

- Individual level data
- Large samples, nationally-representative
- Surveys are repeated, often annually

BUT

- They follow the same individuals over time
- New respondents are added regularly to keep numbers up



Key data: Longitudinal / Panel studies

- British Household Panel Survey (BHPS)
- Understanding Society
- English Longitudinal Study of Ageing (ELSA)
- National Child Development Study (NCDS)
- 1970 British Cohort Study (BCS70)
- Millennium Cohort Study (MCS)
- Understanding Society (UKHLS)
- Growing Up in Scotland (GUS)
- Longitudinal Study of Young People in England (LSYPE)

British Household Panel Survey

- Collected and deposited by the Institute for Social and Economic Research at the University of Essex
- Follows the members of 5,500 households first sampled in 1991 every year to 2008
- Coverage includes:
 - income, labour market behaviour, social and political values, health, education, housing and household organisation

Understanding Society

- The follow-up to the BHPS. Expanded to 40,000 households and 100,000 individuals including the original BHPS sample
- Coverage includes:
 - current employment and earnings; employment status; parenting and childcare arrangements; family networks; benefit payments; political party identification; household finances; environmental behaviours; consents to administrative data linkage (health and education).
- Also incorporates an innovation panel

Cohort studies

- Survey design:
 - Tracking individuals over time who were born in a particular period
- National Child Development Study (1958)
- 1970 British Cohort Study
- Millennium Cohort Study (2000/01)

- **different decades**
 - examine generational change
- **topics: Health/medical focus**
- **social and economic circumstances**



Aggregate data

- Aggregated: statistics or counts
- Units are geographical areas
- Can be used:
 - as they are
 - for further analysis – trends, relationships
 - as contextual information



International macrodata

- Time series data aggregated to country/region (Annual, Quarterly, Monthly)
- Regularly updated
- International governmental organisations (IMF, OECD, IEA, World Bank, UN)
- Wide range of socio-economic topics



UK census data

- 1971-2011 UK census data
- Used as baseline for other statistics
- Detailed combinations of characteristics
- Small geographies
- Census outputs
 - aggregate data
 - flow data
 - microdata
 - boundary data



Qualitative data

Qualitative data is non-numeric information for example:

- interview transcripts
- visual data
- focus groups
- essays
- diaries
- observation notes
- documents
- audio data
- open-ended survey questions
- case notes
- newspaper clippings



Mixed methods approaches combine qualitative data with quantitative (numeric) data.

Data access

- Web access to data and metadata
- Data are freely available to students in higher education institutions
- Data supplied in a variety of formats
 - statistical package formats (e.g. SPSS, STATA)
 - databases and spreadsheets
 - word processed documents, PDF documents etc.



Accessing data

- Open data = no authentication (e.g. much of the international macrodata / census data)
- Registration required for other data, click
- Click Register/login on UK Data Service homepage (top right)
- Need help? See: ukdataservice.ac.uk/get-data/how-to-access/registration



The screenshot shows the UK Data Service homepage. At the top right, there is a navigation menu with links for 'Site search', 'FAQ', 'Help', 'Contact', and 'New users'. Below this, the main navigation bar includes 'About us', 'Get data', 'Use data', 'Manage data', 'Deposit data', and 'News and events'. A red circle highlights the 'Register / Login' link in the top right corner. The main content area features a dark blue banner with the text 'Explore the UK's largest collection of social, economic and population data resources.' and a search bar. Below the banner, there are sections for 'About the UK Data Service' (with a video player showing red double-decker buses), 'Guides and resources' (with a list of guides and a 'Video tutorials' section), and 'See data from all over the world' (with a 'Browse our data map' button). At the bottom, there are sections for 'Data types' (listing 'Census data', 'International macrodata', 'Longitudinal studies', and 'Qualitative/mixed methods'), 'Latest data' (listing 'Small Business Survey, 2014' and 'Second Longitudinal Study of Young People in England: Wave 1, 2013: Safe Room Access'), and 'Featured data' (with a video player for 'Professor Michaela Benzval' and 'The Director of Understanding').

Access conditions

Data Type	Access conditions
Open access <i>Most Census / International - Small number of survey teaching datasets</i>	Open access
End User Licence <i>Most research datasets</i>	Requires registration and user name and password UK academics and students login using their institutional username and password
Special Licence <i>Most survey microdata with lower level geography</i>	Restricted to 'Approved Researchers' under the Statistics and Registration Act
Secure access	Restricted to 'Approved Researchers' and access limited through a physical or virtual environment



Other resources and support

Webinars & Workshops

- See events pages

Guides & Video tutorials

- Topic
- Dataset
- Methods and software

Helpdesk

- Individual support by e-mail

Case studies

- How others used the data

Demos

UK Data Service website:

- Finding data
 - Tools
 - Other useful resources and support
- www.ukdataservice.ac.uk



Questions

