
UK Data Service Secure Lab: Growth and Challenges

Dr Hersh Mann
User Support and Training Manager

Westminster Conference Centre
2 October 2018



Overview

- Security philosophy
- History of secure access
- Growth in Secure Lab use
- Challenges
- Current and new developments
- Adapting for the future

Security philosophy - the Five Safes



Protect respondent confidentiality



Research projects for the 'public good'



Train researchers to use data responsibly



Remote access Secure Lab



Results of analysis are screened

Security philosophy - the Five Safes

- The five safes framework enables us to provide safe access to data yet fulfils the demands for open science and transparency



History of secure access

- Secure Data Service (2009-2012) funded by ESRC
 - To give qualified researchers safe, secure and free access to sensitive or confidential data that cannot be released under other licence agreements
- The SDS was integrated into the new UK Data Service in 2012 and fully launched in spring 2013 as the UK Data Service Secure Lab



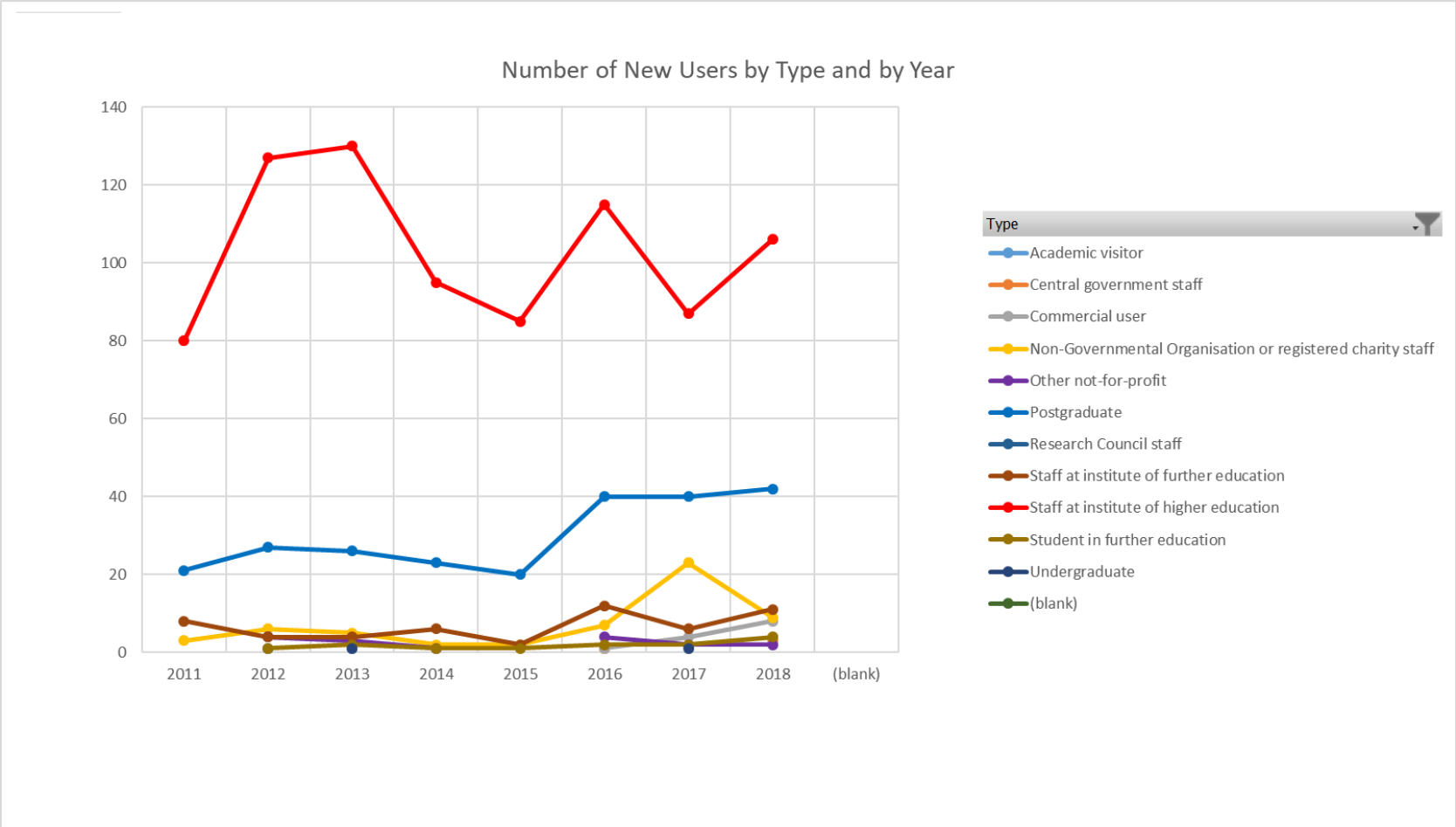
Types of data

- Business microdata
 - Annual Respondents Database
 - Annual Survey of Hours and Earnings
 - Business Structure Database
- Increasing numbers of social surveys
 - Data from Government Departments
 - Quarterly Labour Force Survey, Living Costs and Food Survey, Citizenship Survey
 - Data from other research institutes
 - Birth cohort studies, Understanding Society, Growing Up In Scotland

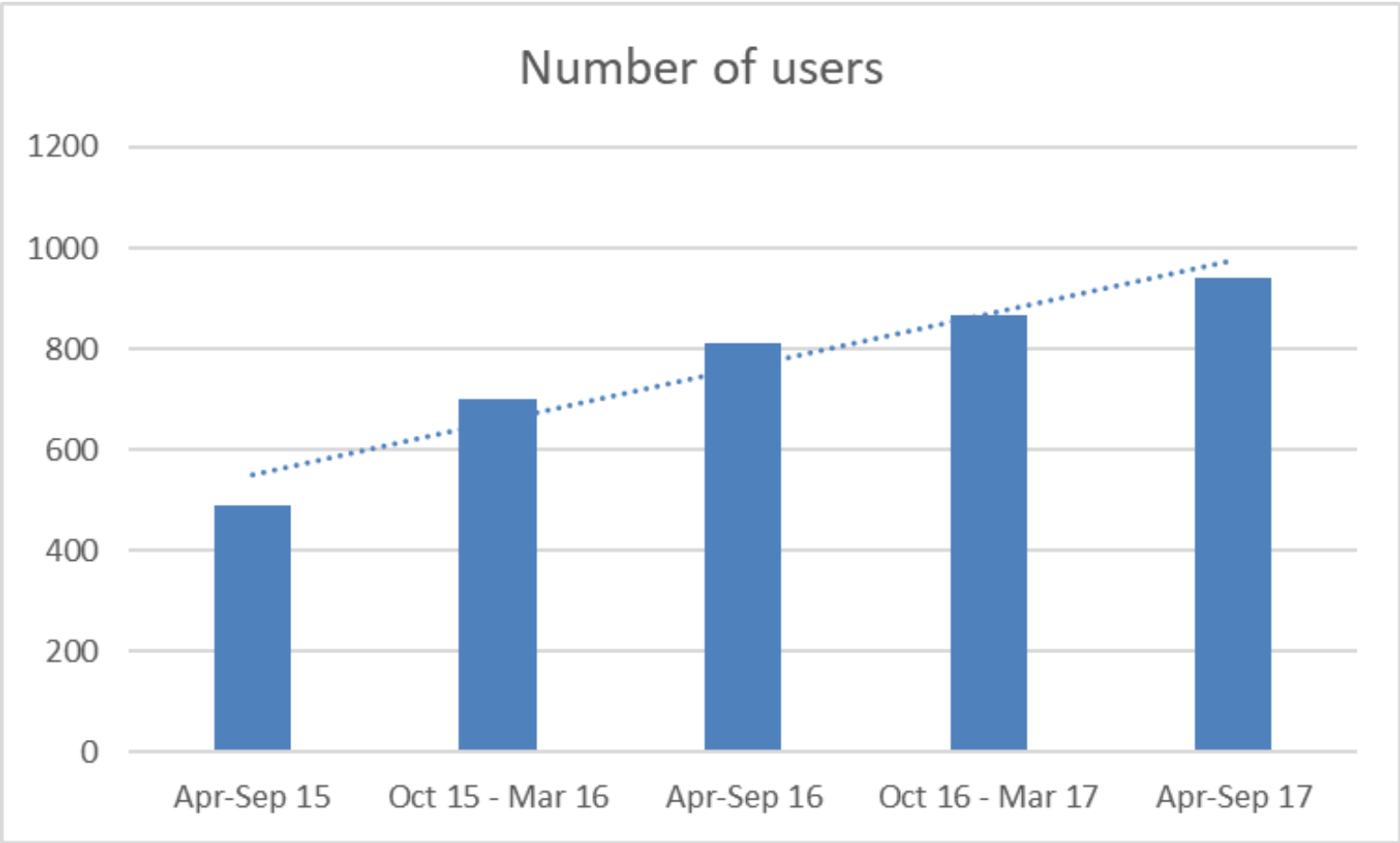
Top ten most popular data collections

- Business Structure Database
- Annual Respondents Database
- Annual Survey of Hours and Earnings
- Quarterly Labour Force Survey
- UK Innovation Survey
- Annual Business Survey
- Business Expenditure on Research and Development
- Annual Respondents Database X
- New Earnings Survey Panel Dataset
- Workplace Employment Relations Survey

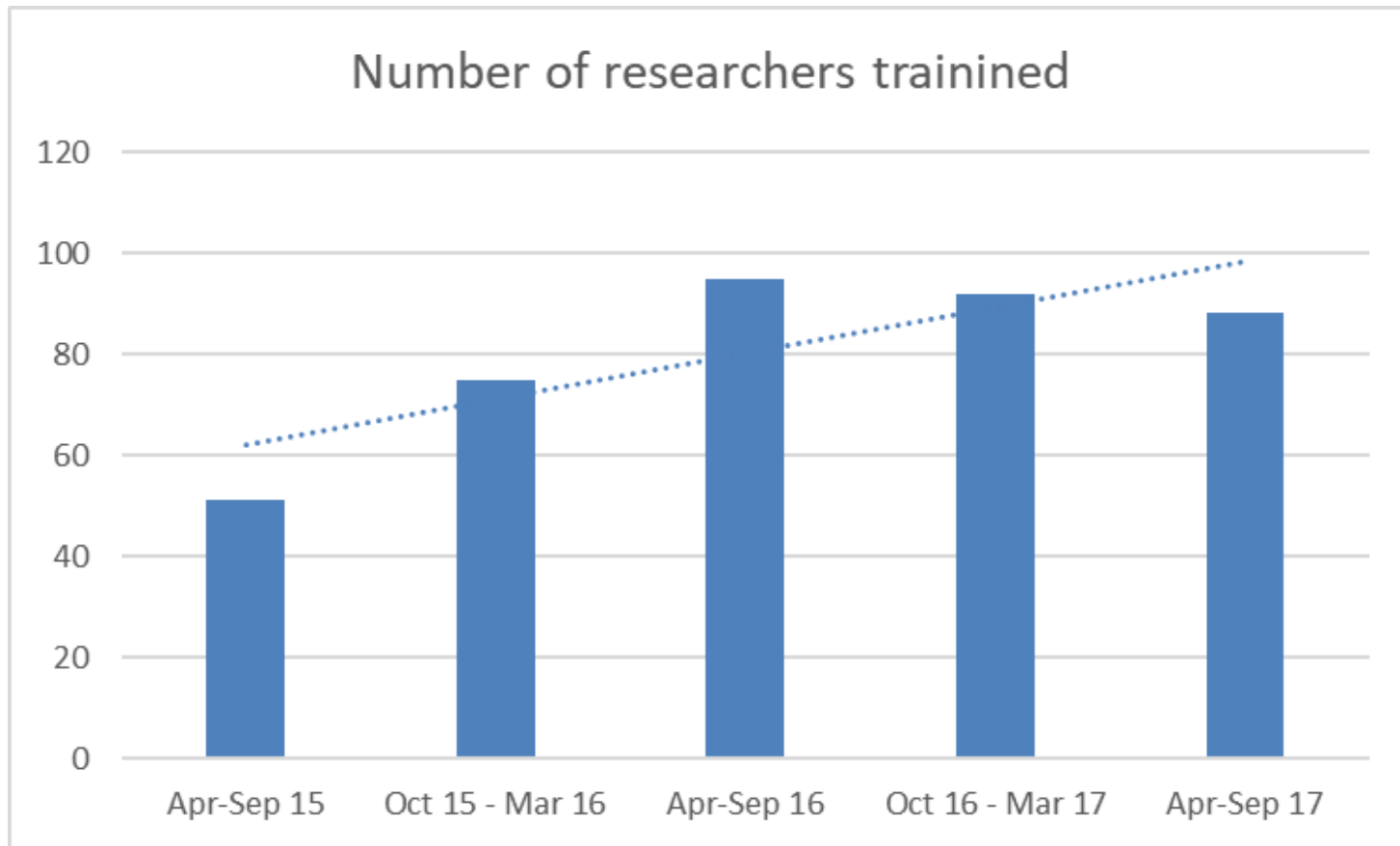
More users each year



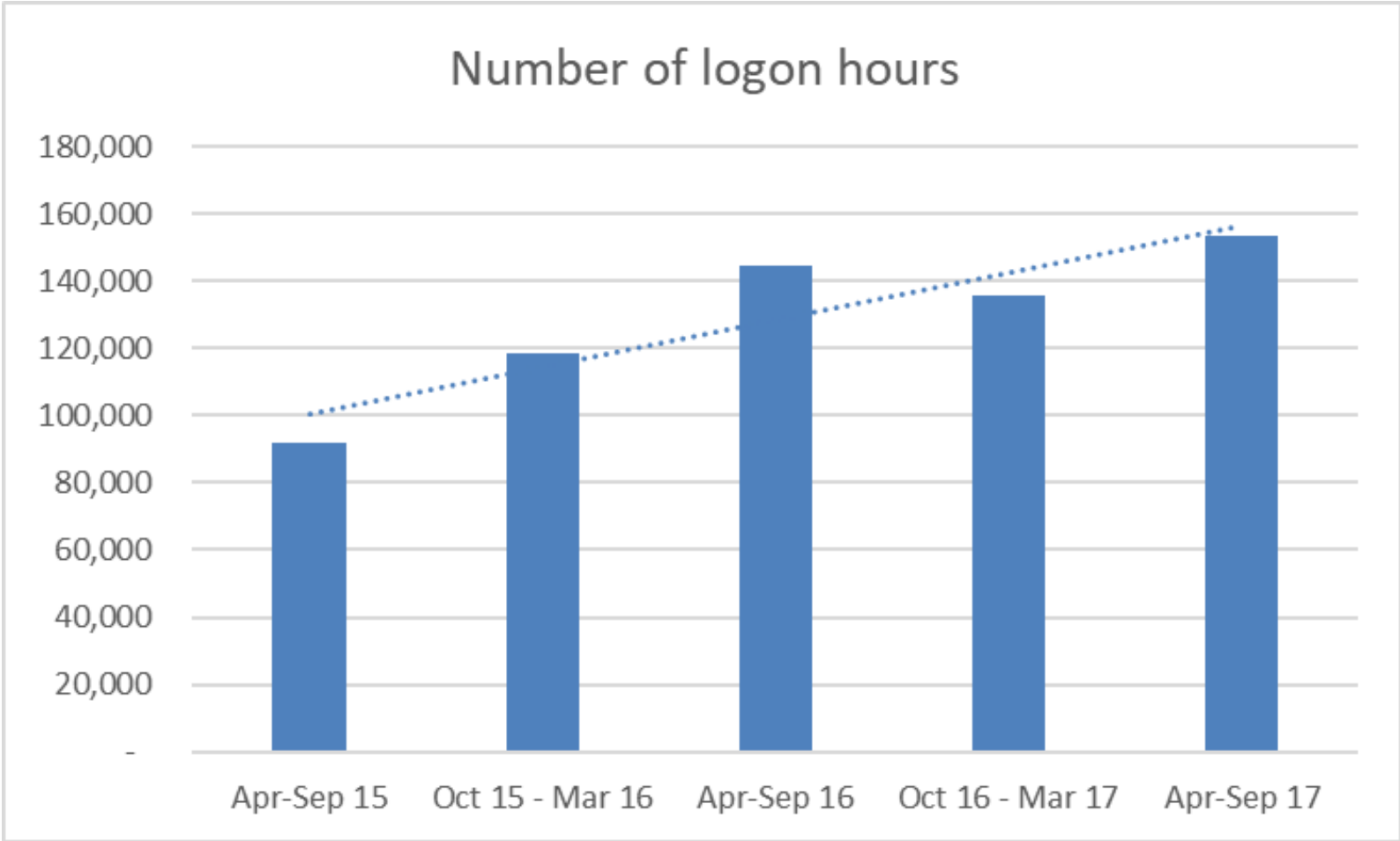
Number of active users



Number of researchers trained



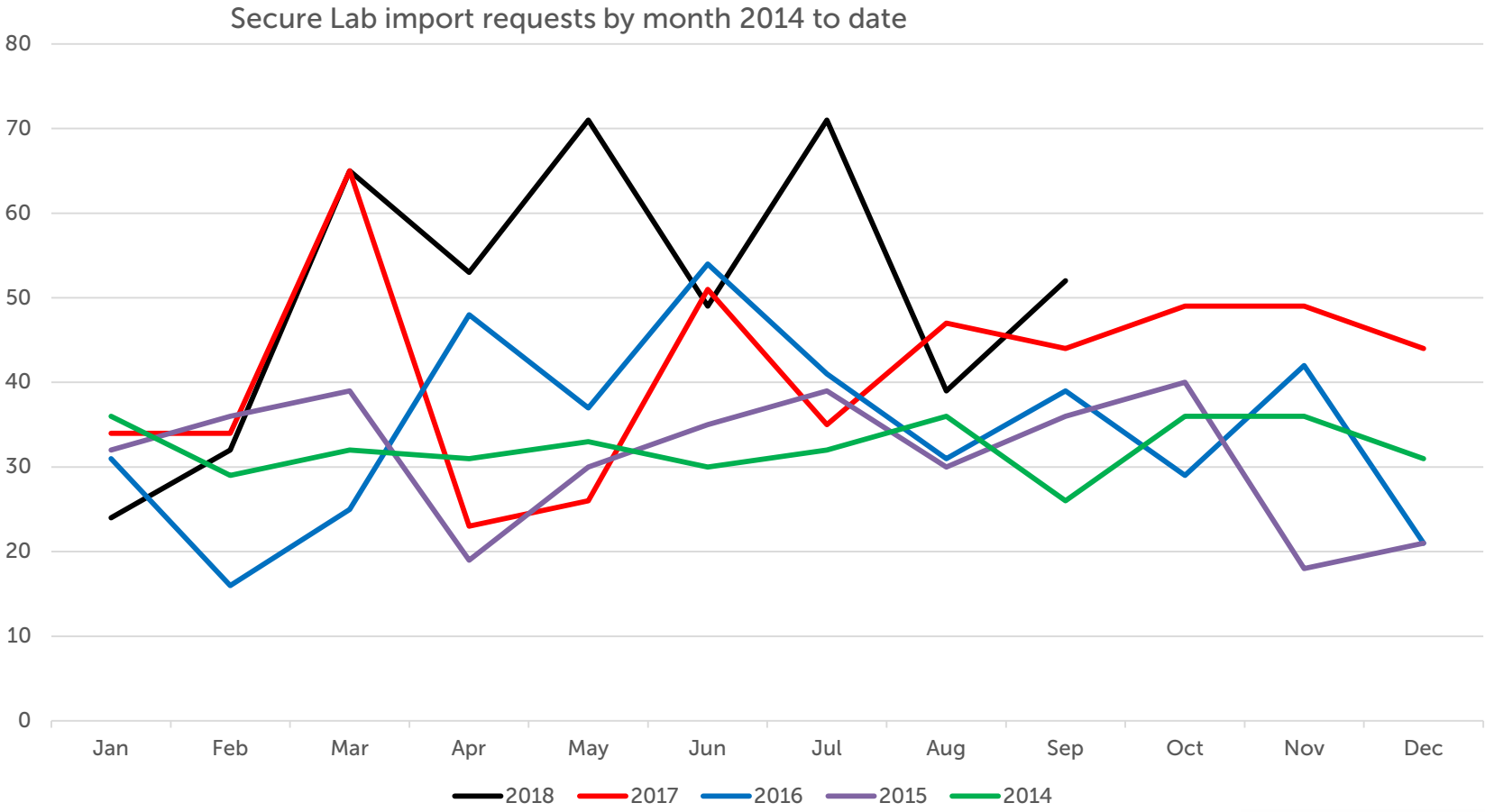
Number of logon hours



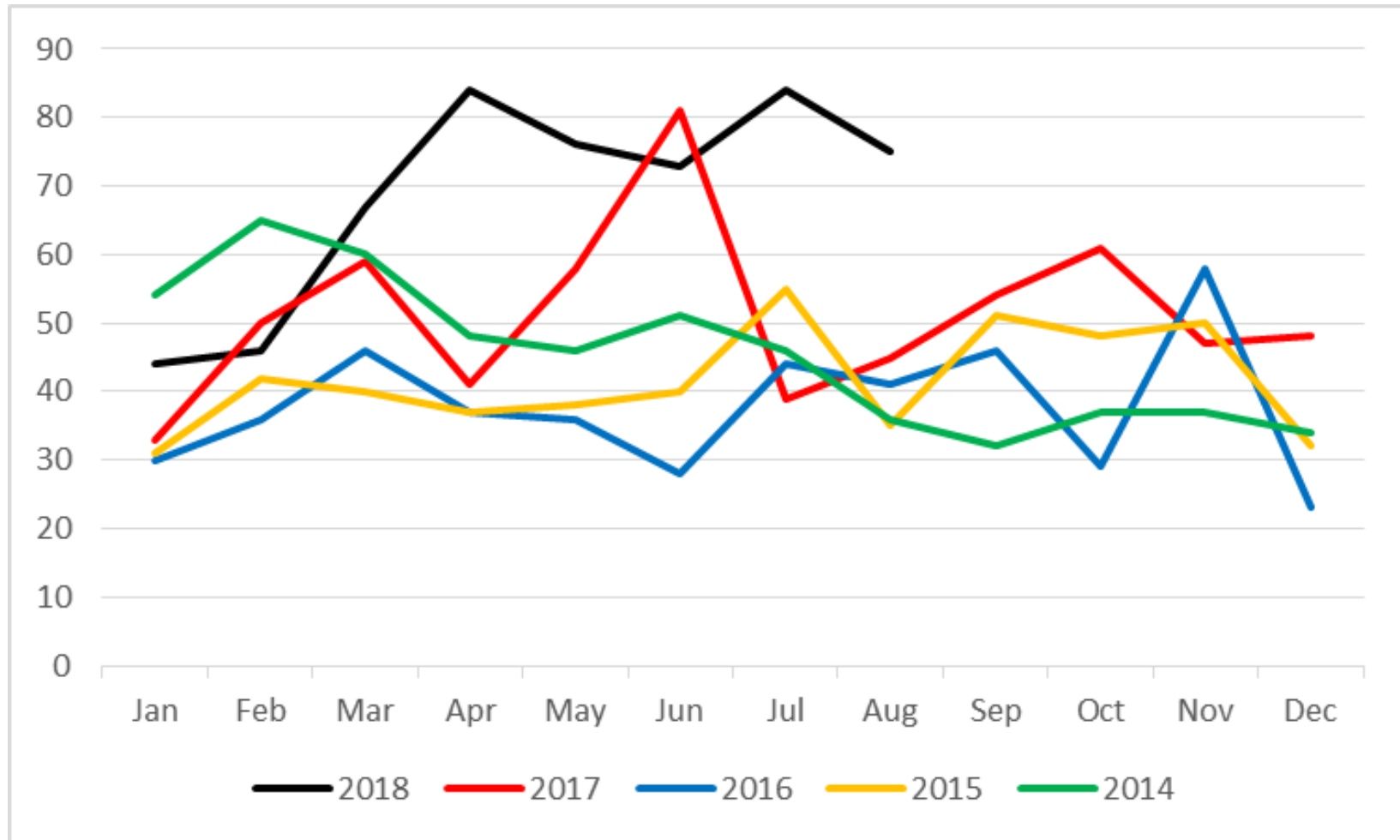
Implications of increased use

- Administration
 - Applications, organising training
- IT
 - Creating accounts, IP addresses, adding data
- User Support
 - Training users, importing data, output checking, data support
 - Other issues – liaising with data owners, software problems

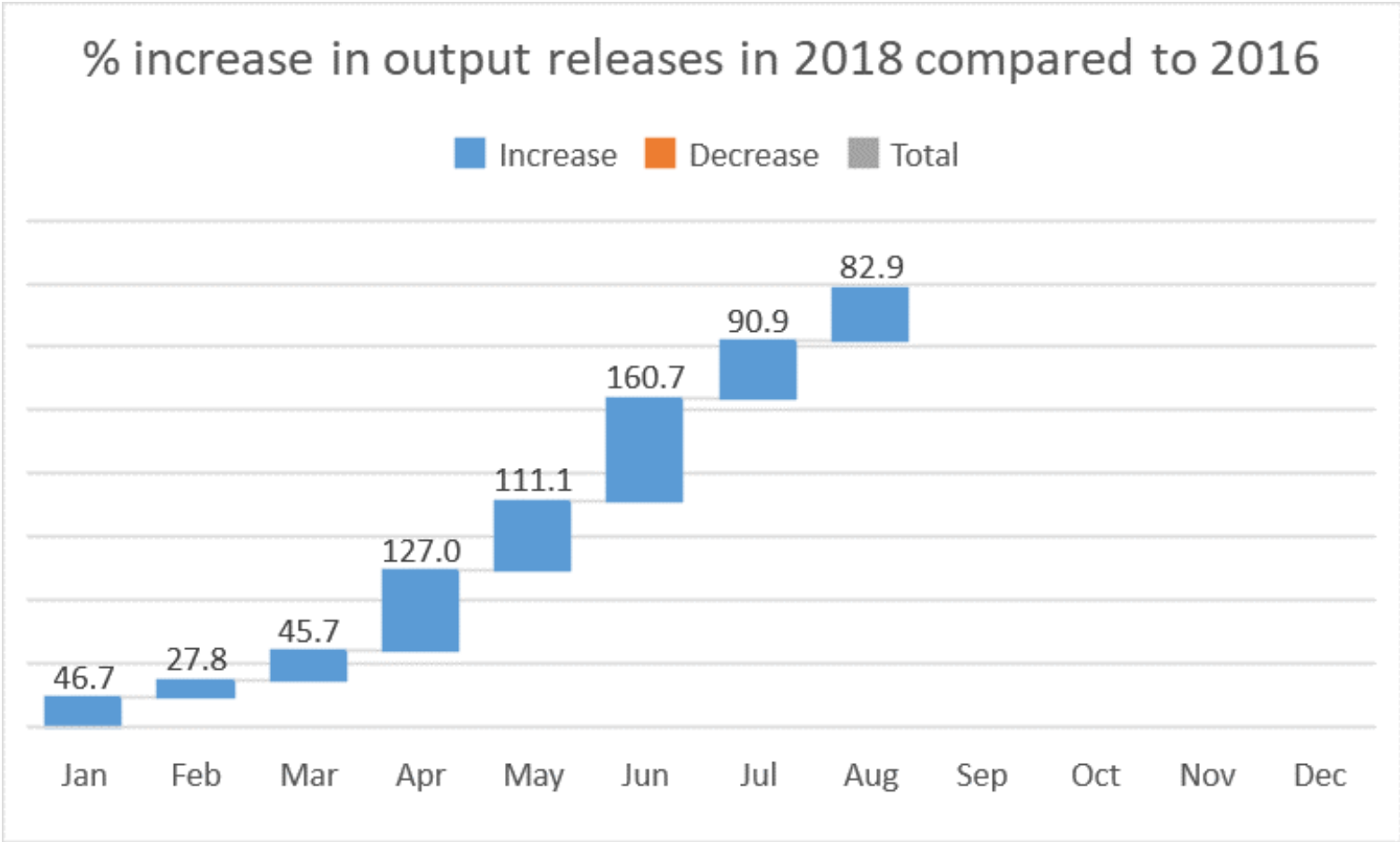
Number of import requests



Number of output releases



Number of output releases

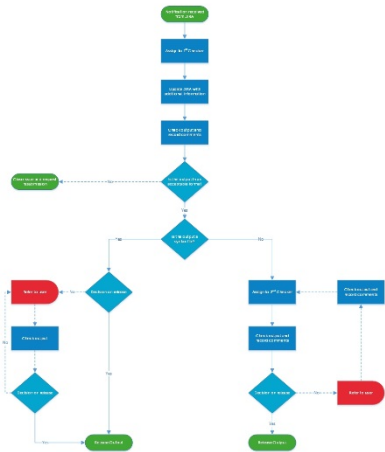


Pressure points?

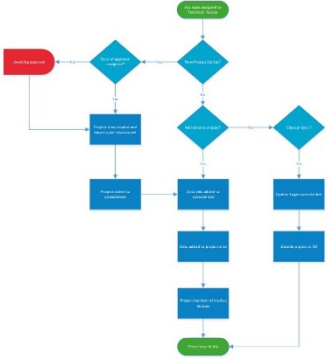
UK Data Service Training Request Process Flowchart



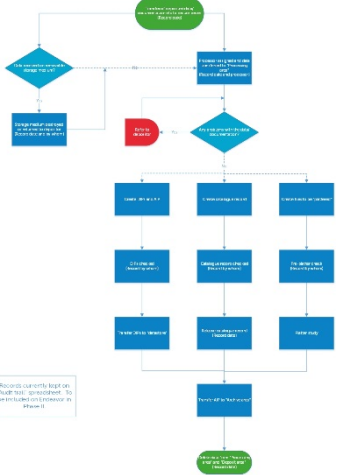
UK Data Service Output Request Process Flowchart



UK Data Service Data Technical Access - Projects Process Flowchart



INGEST



UK Data Service Data Import Request Process Flowchart



Relieving the pressure

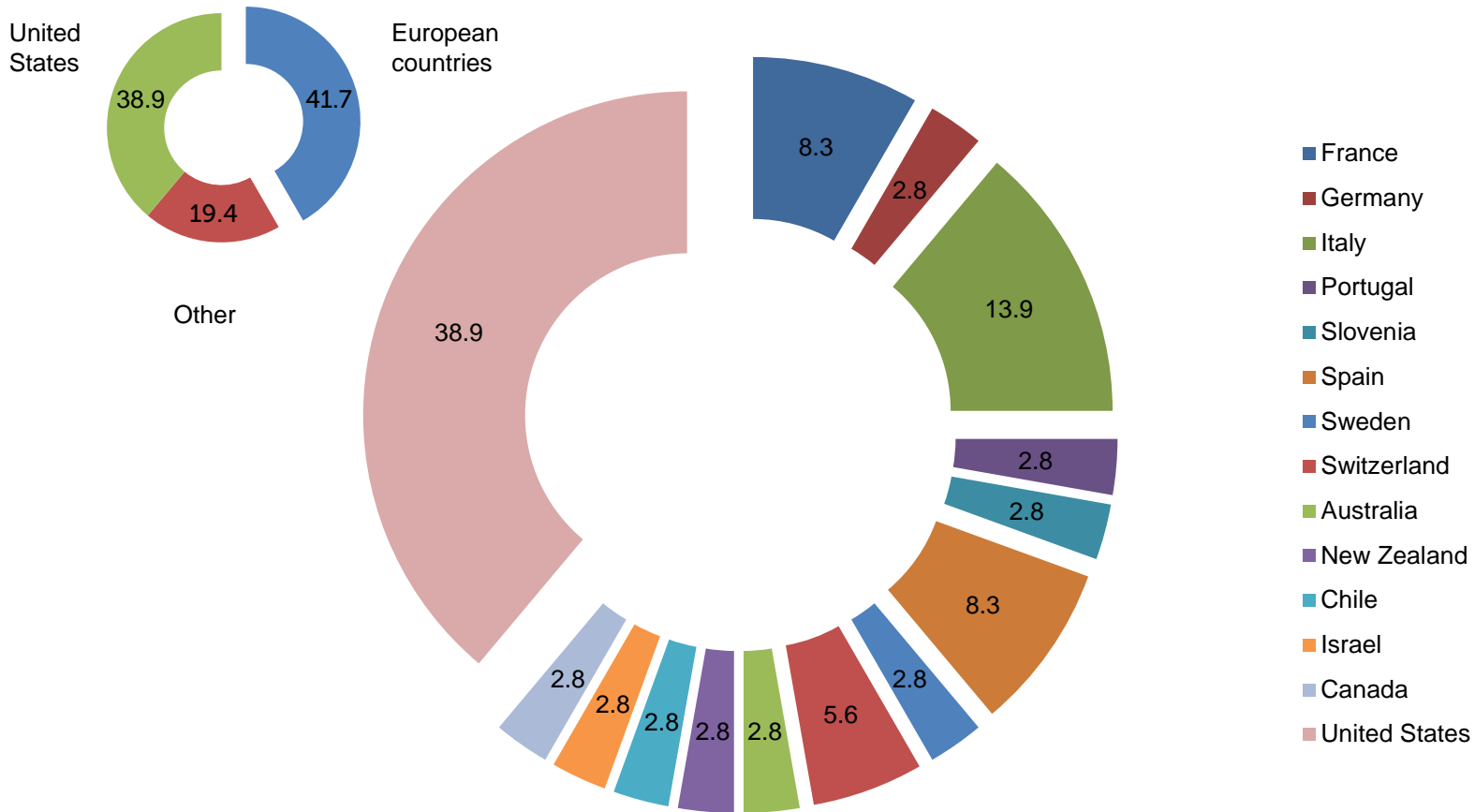
- Internal systems
 - Changes to user account areas for better signposting
 - Online forms for more efficient administration
 - Plans for more online systems to facilitate easier use of the Secure Lab
 - Online forms for data import requests

Current and Future developments

- More guidance on producing outputs
 - A new SDC Handbook is being produced in collaboration with other partners
- Checklist on what criteria an output must meet
- Cross-working pilot with international partners
- Automated tabulation service pilot

- The afternoon breakout sessions will give you an opportunity to tell us what innovations you would like to see

International interest



Data source: JIRA

We are adapting

- We have years of experience, we do not stand still
- New Safe Researcher Training to replace SURE
- More data are available under controlled conditions
 - We are changing procedures accordingly
- We now need to know what your priorities are

Questions

ukdataservice.ac.uk/help/

Follow us at:

ukdataservice@jiscmail.ac.uk

twitter.com/ukdataservice

facebook.com/ukdataservice

