



An introduction to health data in the CLS national longitudinal cohort studies

Richard Silverwood, Associate Professor of Statistics
Centre for Longitudinal Studies, UCL Social Research Institute

Health Studies User Conference
1 July 2024

CENTRE FOR
LONGITUDINAL
STUDIES



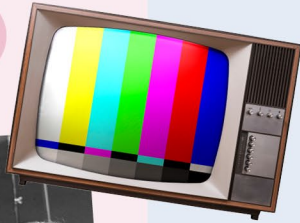
Economic
and Social
Research Council

What we do at CLS

- ESRC-funded Resource Centre.
- Run a unique series of UK national cohort studies:
 - Follow thousands of people across life, from cradle to grave.
 - Covering multiple generations.
 - Collect extensive & rich data.
- Provide free data to the research community (e.g. via UK Data Service) ([link](#)):
 - Documentation, guidance & training.
 - Researchers can input on the data we collect (consultations).
- Conduct research:
 - Multidisciplinary, substantive & methodological (survey and statistical).

1946

1946 National Survey
of Health and
Development



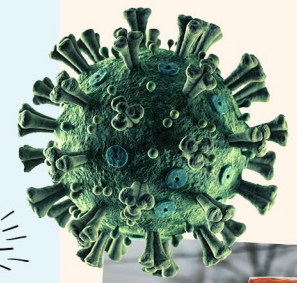
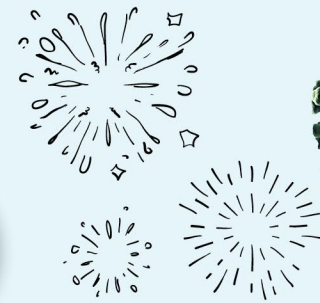
1970

BCS70
1970 British
Cohort Study



2000

MILLENNIUM
COHORT STUDY



NHS



Photo: BiblioArchives/
LibraryArchives

ncds
National Child
Development Study

1958



NEXT
STEPS
LEARNING FROM YOUR GENERATION

1989

Photo: Miguelon756-5303

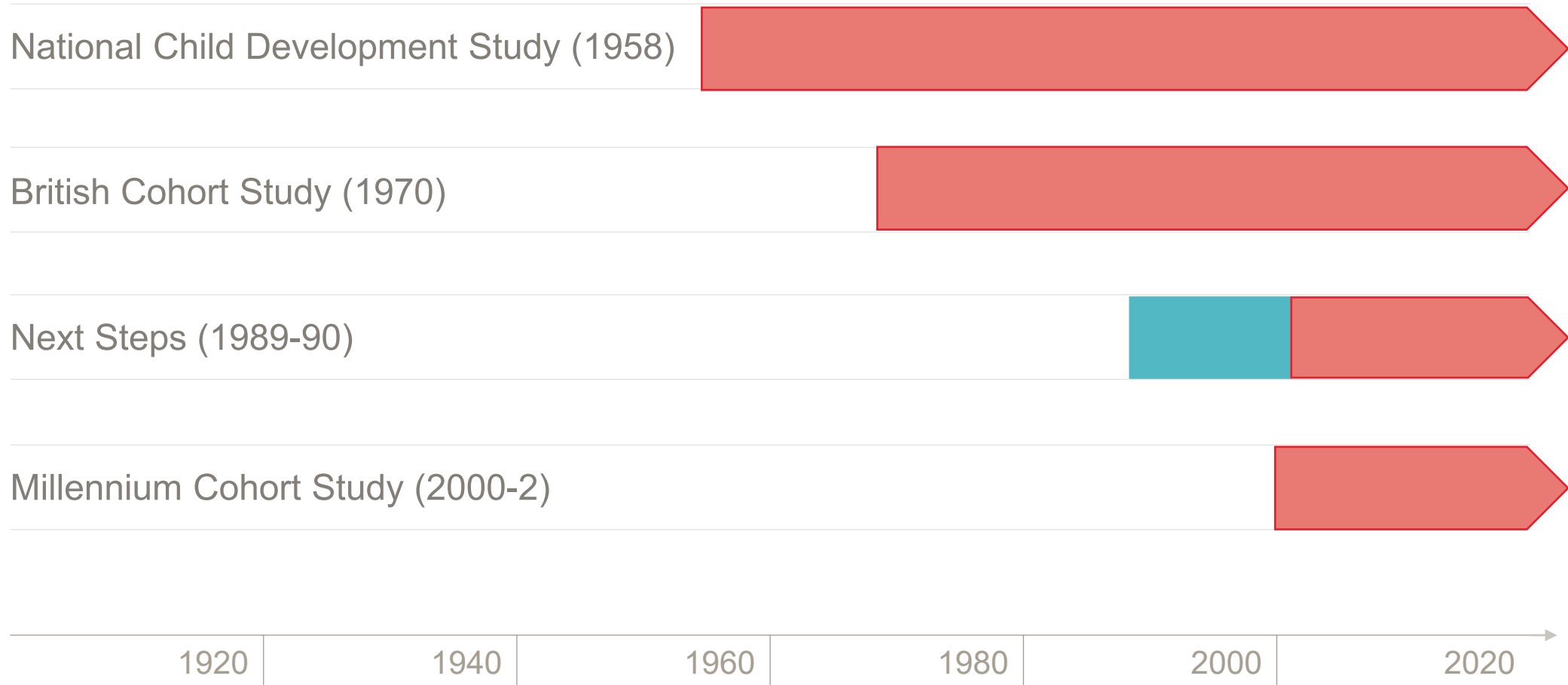


EARLY LIFE COHORT
FEASIBILITY STUDY

2022

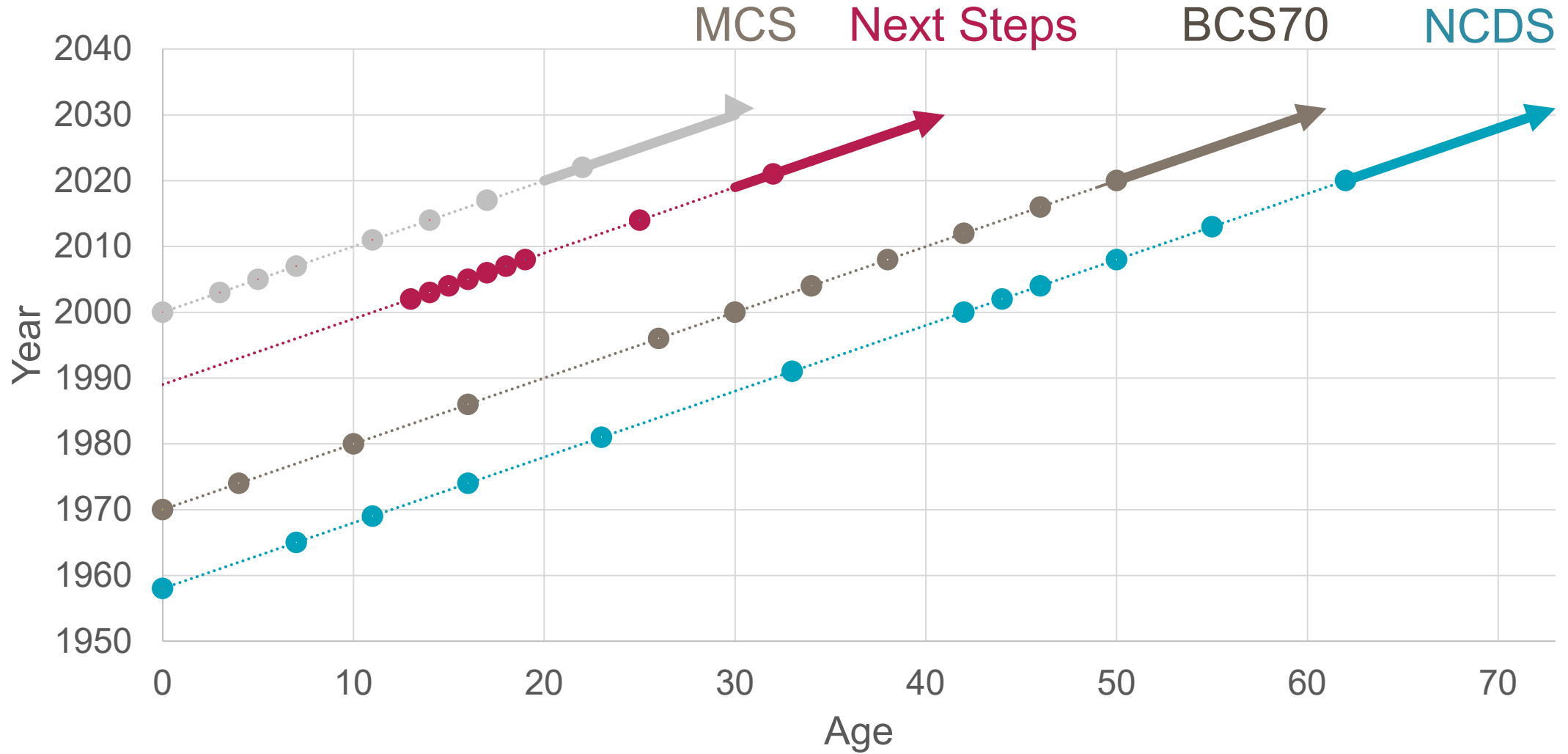


CLS cohorts



Follow-up across life, all N>16,000

CLS core study timelines



Typical information covered



Birth

Household composition
 Parental social class
 Obstetric history
 Smoking in pregnancy
 Pregnancy
 (problems, antenatal care)
 Labour
 (length, pain relief, problems)
 Birthweight, length



School years

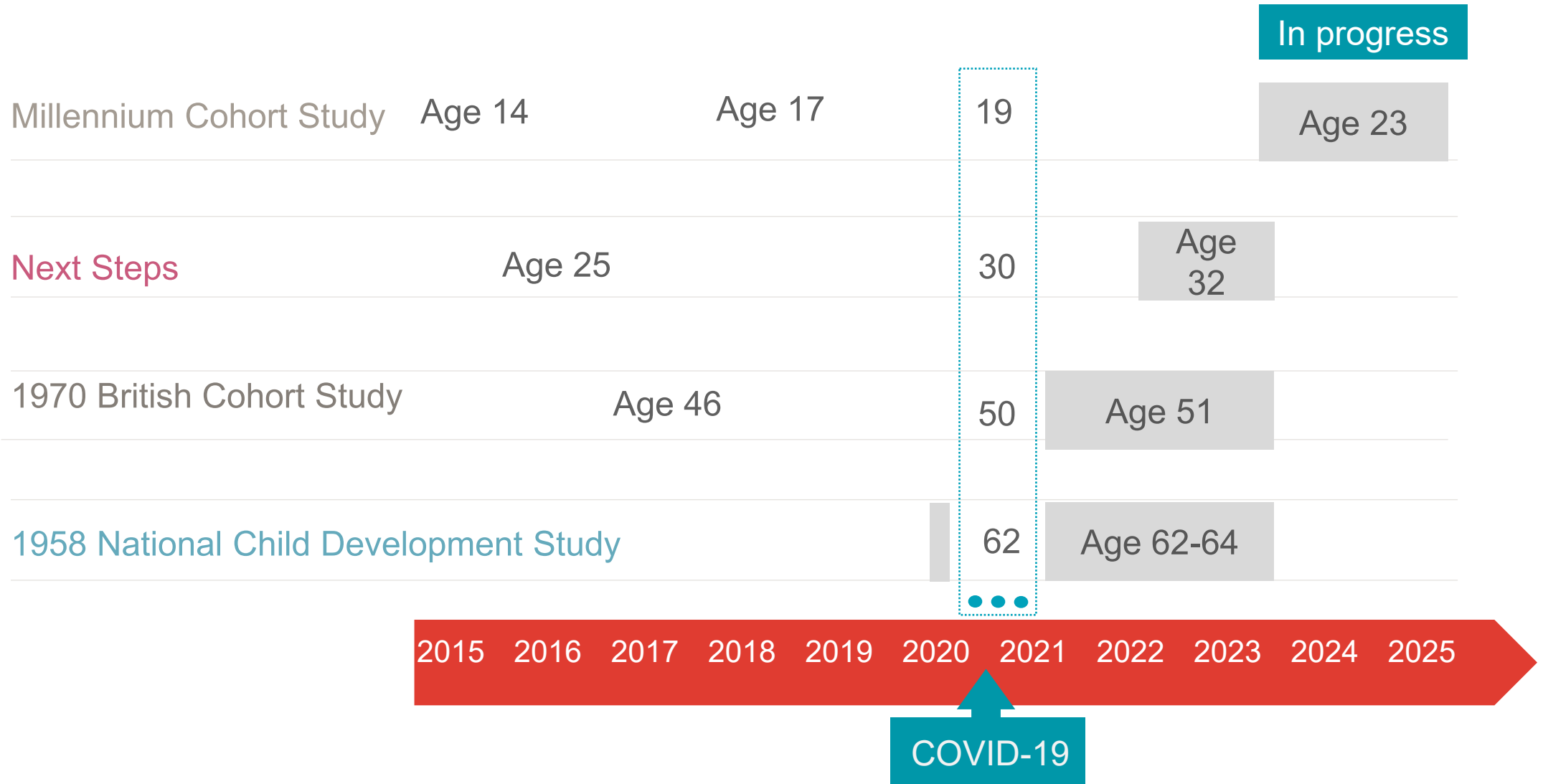
Household composition
 Parental social class
 Parental employment
 Financial circumstances
 Housing
 Health
 Cognitive tests
 Emotions and behaviour
 School
 Views and expectations
 Attainment



Adult

Household composition
 Employment
 Social class
 Income
 Housing
 Health (including biomarkers)
 Well-being and mental health
 Health-related behaviour
 Training and qualifications
 Basic skills
 Cognitive tests
 Views and expectations

Core data collections 2015-2025



Next Steps age 32 health data

Available August 2024

- General/longstanding health problems.
- COVID-19.
- Height/weight.
- Substance use.
- Sleep.
- Diet and exercise.
- Pregnancy histories, fertility treatments and family planning.
- Saliva collection for DNA extraction and genotyping.

BCS70 age 51-53 health data

Available November 2024

- General/longstanding health problems.
- Health conditions.
- COVID-19.
- Height/weight.
- Substance use.
- Sleep.
- Diet and exercise.
- Drinking and smoking.
- Menstruation, gynaecological problems and menopause.
- Sterilisation/vasectomy.
- Fertility.

NCDS age 62-65 sweep health survey data

Available January 2025

- General/longstanding/physical health problems.
- Health insurance.
- COVID-19.
- Height/weight.
- Substance use.
- Sleep.
- Diet and exercise.
- Pain.
- Gynaecological problems.
- Hearing.
- Vision.
- Dental health.

NCDS age 62-65 biomedical data

Available January 2025

Nurse visit – bio-measures:

- Prescribed medications.
- Seated and standing blood pressure.
- Maximal grip strength.
- Blood sampling (biomarkers, DNA).
- Anthropometry (weight, body fat, waist, hip).
- Timed normal walk.
- Standing balance: Leg raise.

Online diet questionnaire:

- Oxford WebQ.
- 24-hour recall of food and drink consumption on two days.
- Days randomly selected from the seven days following the nurse visit.
- Nutrient intake automatically derived.

Adult biomedical data collections

Cohort	Age	Data available
NCDS	44-45	Yes (UKDS)
	62-65	January 2025
BCS70	46	Yes (UKDS)

Enormous scientific opportunities:

- Single cohort analysis (e.g. life course determinants of health).
- Cross-cohort analyses (e.g. trends in health, its determinants and consequences).

Biomarkers in NCDS and BCS70

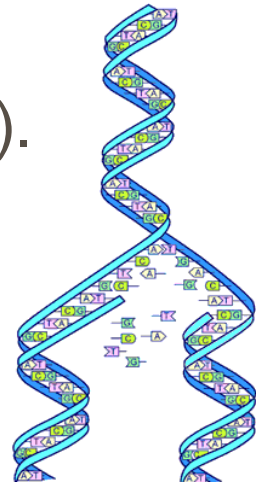
	NCDS (44-45)	NCDS (62-65)	BCS70 (46)
Total and HDL cholesterol	✓	✓	✓
Triglycerides	✓	✓	✓
C-reactive protein (CRP)	✓	✓	✓
Glycated haemoglobin (HbA1c)	✓	✓	✓
Insulin-like growth factor 1 (IGF-1)	✓		✓
Total and allergen-specific immunoglobulin E	✓		
Fibrinogen	✓		
Tissue plasminogen activator (t-PA)	✓		
Von Willebrand factor (9vWF)	✓		
Serum 25-hydroxyvitamin D	✓		
Fibrin D-dimer	✓		
Ferritin			✓
Cytomegalovirus			✓
Red blood cell count			✓
Metabolic biomarker profiles		✓	

Linked administrative health data in the cohorts

Country	Study	Health admin data	Access
England	NCDS, BCS, Next Steps, MCS	Hospital Episodes Statistics (HES) <ul style="list-style-type: none"> Admitted Patient Care (APC) Critical Care (CC) – linked to APC Accident & Emergency (A&E) Outpatient Care (OP) 	Available at UKDS (e.g. link) via Secure Lab
Scotland		Scottish Medical Records (SMR)	Available at UKDS (e.g. link) via Secure Lab
	BCS, NCDS, MCS	<ul style="list-style-type: none"> Inpatient Outpatient Birth and neonatal records Prescribing information 	
	BCS, NCDS only	<ul style="list-style-type: none"> Maternity 	
	MCS only	<ul style="list-style-type: none"> Immunisations (SRS), Child Health Review 	
Wales	MCS	<ul style="list-style-type: none"> Health data assets from SAIL Databank (e.g. emergency department, outpatient, COVID data) and for cohort members' parents 	Available at SAIL Databank; to be deposited with UKDS (parents and cohort members up to age 14)
		<ul style="list-style-type: none"> Hospitalisations & no. of diagnoses from ICD-10 chapter codes up to age 11 	Available at UKDS via Secure Lab (link)

Genetic data

- **NCDS**: available, combined arrays n: 6,312.
- **BCS70**: available, n: 5,598.
- **Next Steps**: saliva collection completed at age 32, funding for DNA extraction and genotyping.
- **MCS**: available, n: 20,257, trios (cohort member, mother, father).
- New data access system (typically <1 month for a response, simple form) ([link](#)).
- More details: <https://cls-genetics.github.io/>.
- In future:
 - Polygenic scores for multiple health/social phenotypes.
 - Data for DNA methylation - derivation of multiple epigenetic clock measurements.



COVID-19

- Aimed to understand economic, social and health impacts.
- Five national longitudinal cohort studies; ages 19–74.
- Surveys:
 - W1 May 2020, W2 Sept-Oct 2020 and W3 Feb-March 2021.
 - Wide range of topics including family, employment, home schooling, mental health during lockdown, other effects of the pandemic.
- Serology study:
 - Over 10,000 finger-prick blood samples returned, April-July 2021.
 - N-assay (naturally occurring antibodies through exposure to virus); S-assay (antibodies occurring following vaccination).
- More info on CLS website ([link](#); [link](#)); data available from UKDS ([link](#); [link](#)).

Three recent additions

Early Life Cohort Feasibility Study ([link](#)):

- Testing the feasibility of a new UK-wide birth cohort study.
- Recruiting several thousand babies, collecting information about their families and their development; currently in evaluation phase.

Children of the 2020s ([link](#)):

- Nationally representative birth cohort study of babies from ~8,500 families born Sept–Nov 2021 in England.
- Focus on family, early education and childcare determinants of early school success.
- Wave 1 in 2022 (9 months old) (data available ([link](#))); four subsequent waves, up to age 5 years.

Three recent additions

COVID Social Mobility and Opportunities (COSMO) ([link](#)):

- Cohort study of over 12,000 students in England who were in Year 11 (15/16y) in 2020/21; includes data from parents.
- Exploring disruption to schooling during the pandemic and longer-term educational and employment inequalities.
- Wave 1 in 2021/2022, wave 2 in 2022/2023 (data available ([link](#))).



Thank you.

CENTRE FOR
LONGITUDINAL
STUDIES



Economic
and Social
Research Council