

**SMART ENERGY  
RESEARCH LAB**

UNIVERSITY RESEARCH FOR PUBLIC GOOD

# SERL project summary

Simon Elam

Director of the Smart Energy Research Lab

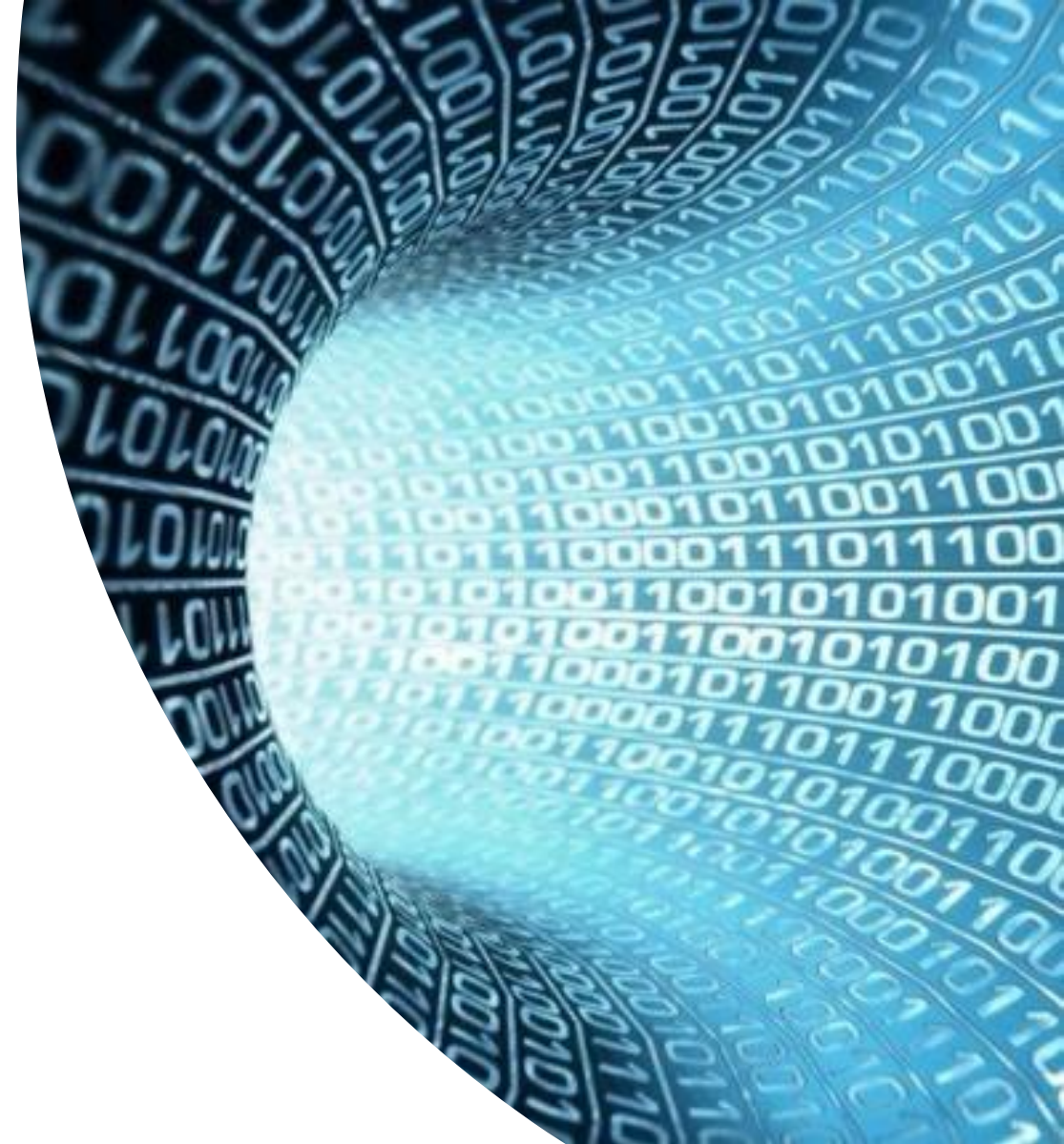
# SERL Vision

The **Smart Energy Research Lab (SERL)** will

- Provide a secure data portal for UK researchers
- Grant access to high-resolution energy data
- Facilitate innovative energy research for years to come

Complemented by

- SERL's multi-disciplinary research programme



**SMART ENERGY  
RESEARCH LAB**  
UNIVERSITY RESEARCH FOR PUBLIC GOOD

**Project Duration: 5 Years (Aug 2017- August 2022) Funding: £6m**

Funded by

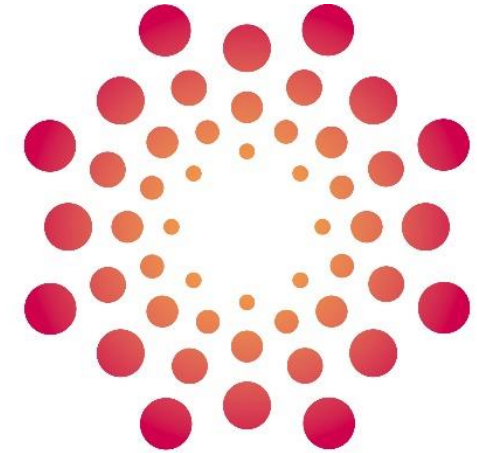


Consortium partners



# Why do we need SERL?

- Historically, and currently, very difficult for researchers to access good quality, demand-side energy data in the UK
- Smart meter data should be a game-changer – high resolution (HH) data
- However substantial barriers to accessing smart meter data
  - Technical
  - Legal
  - Financial
- Hence SERL funded to be a **central resource** for the UK research community
- SERL's focus is on enabling research investigating energy demand/consumption etc in domestic buildings
  - requires use of granular, household level energy data – which is personal data (GDPR) and could be disclosive hence Secure Lab setting



**SMART ENERGY  
RESEARCH LAB**

UNIVERSITY RESEARCH FOR PUBLIC GOOD



**SMART ENERGY  
RESEARCH LAB**  
UNIVERSITY RESEARCH FOR PUBLIC GOOD



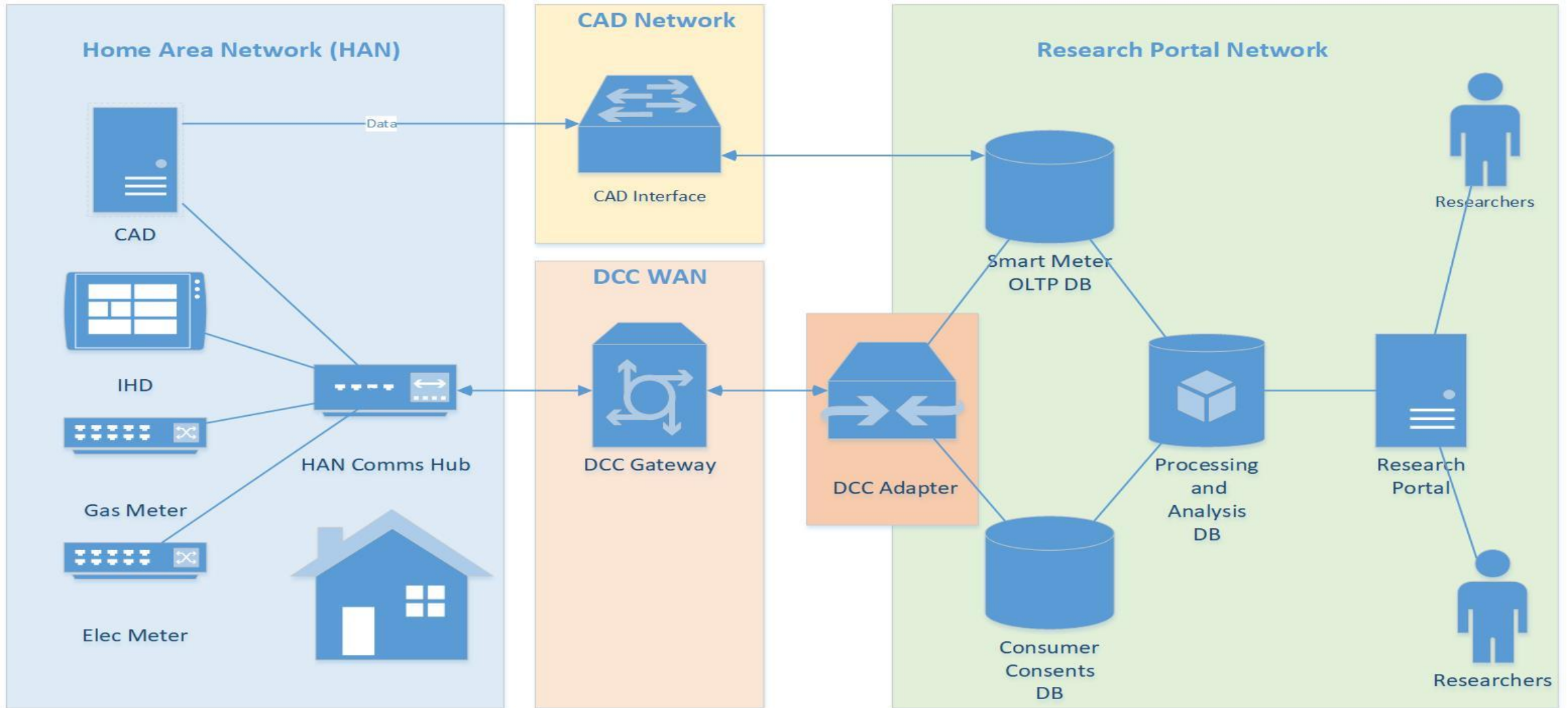
# SERL Data

Pseudo-anonymised household-level data:

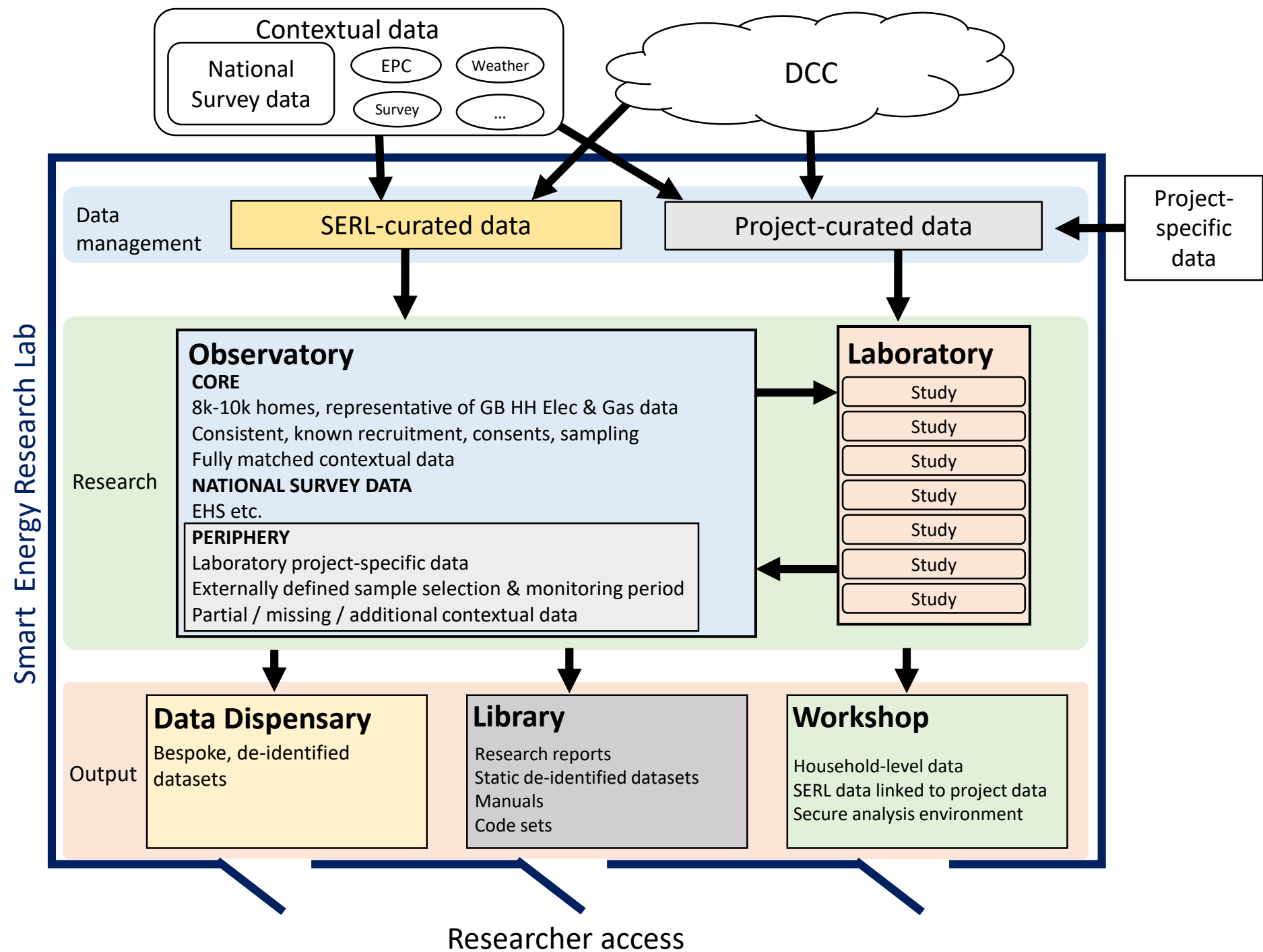
- Smart meter data
  - Longitudinal daily and half-hourly energy (electricity and gas) consumption data
    - Historic – previous 12 months from point of consent
    - Ongoing – until participant withdraws consent or change of tenancy etc
  - tariff data
  - additional smart meter technical data
- Contextual data
  - a short SERL survey completed by participant households
    - household information
    - Building characteristics
  - Energy Performance Certificate (EPC) data
  - weather data



# SERL System Diagram



SERL Research Design Framework



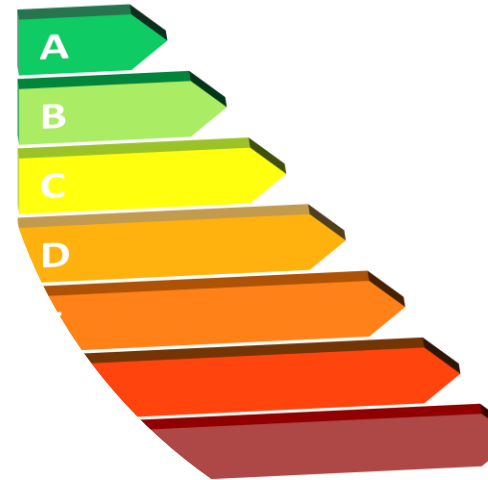
# Examples of SERL-facilitated Research

## SERL Research Programme

- The short and long-term impact of COVID-19 on building energy demand and future decarbonisation (UCL/CREDS)
- Identifying wintertime comfort in UK homes (Leeds Beckett University)
- SERL annual report (University College London)
- Understanding habitual energy consumption (University of Southampton)
- Domestic Operational Rating (DOR): Development, Programming and Testing (Loughborough University)
- Understanding domestic building thermal efficiency with smart meter data (UCL)

## Examples of other potential research (e.g. your project?):

- How do socio-demographic factors impact demand profiles?
- Identification, targeting and mitigation of fuel poverty
- Distributional impact of switching suppliers/tariffs on bills and energy consumption





# Participant Recruitment

## Observatory

- We aim to recruit 8-10k participants (households) to our core Observatory panel by the end of 2020
  - Representative of GB households
- Pilot Phase conducted in Aug-Sept 2019
  - Stratified random sample households with SMETS2 meters
  - Over 1700 households recruited
- Two further waves of participant recruitment in 2020
  - Wave 2 (4k participants) – Aug/Sept
  - Wave 3 (4k participants) – Oct/Nov

## Laboratory

- Laboratory projects recruit their own participants and include consent for SERL to collect data



# Data Governance

**Robust Data Governance** is absolutely fundamental to the development and operation of the SERL research portal

- **Inbound governance** - Data collected by SERL via informed consent from participants (GB households). Full compliance with the Smart Energy Code (SEC) and GDPR.
- **Outbound governance** - ensures that only projects approved by SERL's Data Governance Board can access data via a Secure Lab using "5 Safes" protocols.



# Accessing SERL data – 5 Safes

Accessing SERL data via a Secure Lab environment:

- safe people - all researchers must obtain ONS Accredited Researcher status
- safe projects – all projects must be approved by SERL DGB
- safe settings – UKDS Secure Lab / SERL research portal
- safe data – appropriate for secure lab environment e.g. pseudo-anonymised
- safe outputs – via Statistical Disclosure Control





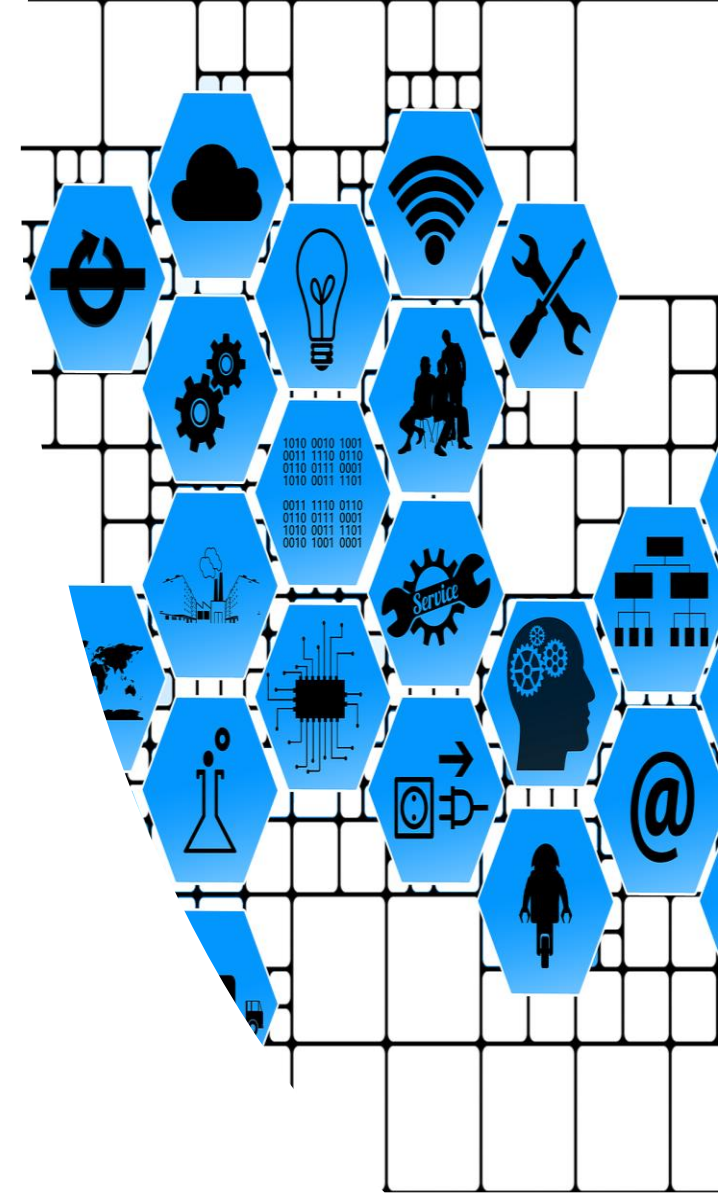
# SERL Data Provisioning

# Researcher datasets

- Regular updates (monthly/quarterly)
- Robust data Quality Assurance before release
  - Data QA report, data quality flags/scores, derived variables
- Exploratory Analysis dataset
  - First release – June 2020
  - Second release – July 2020
    - smart meter data (Jan 2019 to June 2020)
    - Linked to contextual data (survey, EPC, weather)

## SERL Secure Lab environments

- UKDS Secure Lab – available now
- SERL Research Portal (beta) – currently in Test
- SERL Research Portal – available in Aug/Sept 2020



# Where are we now (Q2 2020)?

- We have established:
  - Technical infrastructure:
    - DCC Adapter service
    - Participant Portal
    - Data ingest and management processes
  - Data governance framework and DGB
  - SERL research programme – 6 projects commissioned
- SERL is now a **live project**
  - Data from 1,700 households (Pilot Phase)
  - First dataset published via UKDS
- **Next steps**
  - Participant recruitment – two more waves in 2020
  - Research Portal – Q3 2020
  - SERL research programme – research continuing
  - SERL DGB – **reviewing research project applications – please apply!**





# More information and accessing SERL data

## Accessing SERL data

- Once the permanent data collection is released we **welcome research project applications to use SERL data**. Information on the process:
  - SERL - <https://serl.ac.uk/researchers/>
  - UKDS - <https://www.ukdataservice.ac.uk/use-data/secure-lab.aspx>

## SERL data via UKDS - see catalogue records:

- Exploratory Dataset (SN 8643)
  - <https://beta.ukdataservice.ac.uk/datacatalogue/studies/study?id=8643#!/details>
- Permanent Collection (SN ????)
  - Expected release in August 2020

## SERL Contact Details:

website: <https://serl.ac.uk/>

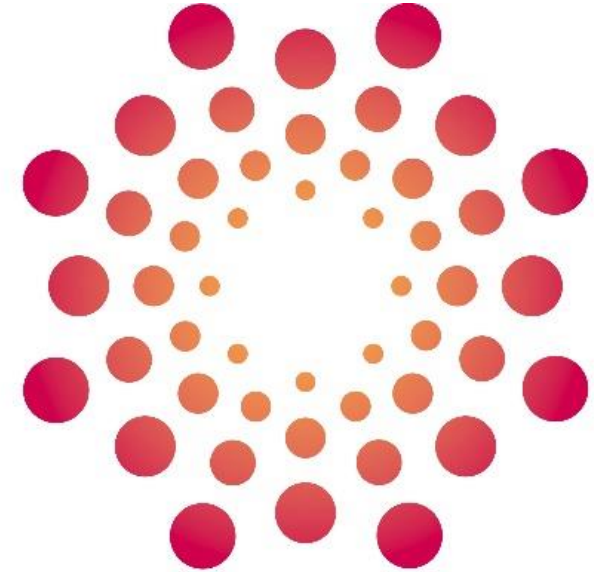
email: [info@serl.ac.uk](mailto:info@serl.ac.uk)



SMART ENERGY  
RESEARCH LAB  
UNIVERSITY RESEARCH FOR PUBLIC GOOD

# Acknowledgements

- All work to develop the Smart Energy Research Lab, including this presentation, is supported by an Engineering and Physical Sciences Research Council grant - EP/P032761/1.
- There are over 30 members (co-investigators and researchers) of the SERL Consortium across 8 organisations who have contributed to the development of SERL.

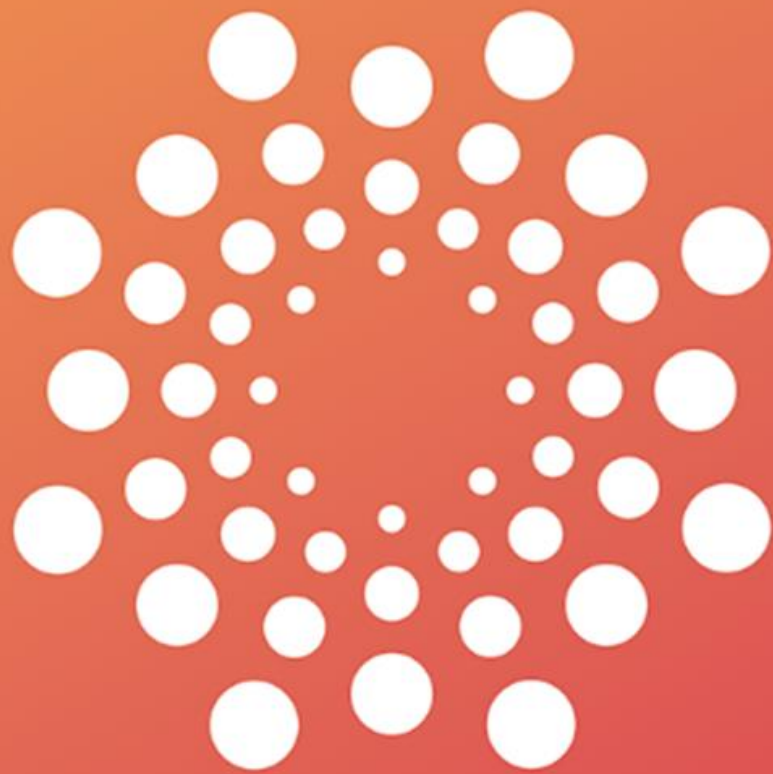


**SMART ENERGY  
RESEARCH LAB**

UNIVERSITY RESEARCH FOR PUBLIC GOOD



**SMART ENERGY  
RESEARCH LAB**  
UNIVERSITY RESEARCH FOR PUBLIC GOOD



# SMART ENERGY RESEARCH LAB

UNIVERSITY RESEARCH FOR PUBLIC GOOD