

Data in the spotlight: Longitudinal data

Beate Lichtwardt, James Rayner, Melissa Ogwayo
UK Data Service/UKDA, University of Essex

Online workshop, 20 November 2025



Roadmap

Mentimeter time

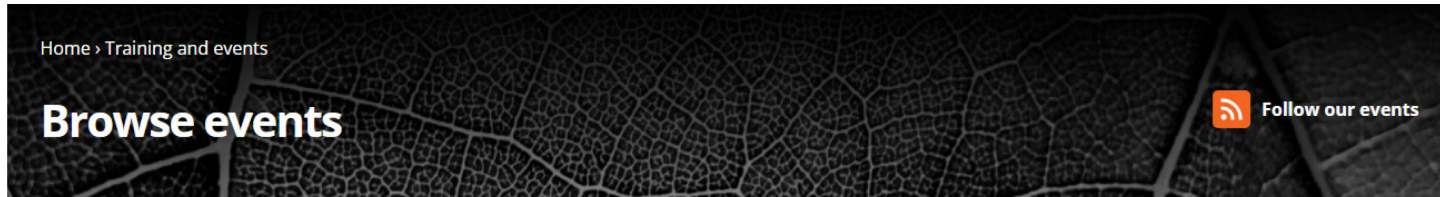
UK Data Service (UKDS) – Intro

What longitudinal data are available via the UK Data Service

Where to find and how to access data, resources and help

Hands-on practical

Slides and recording of the event



35 upcoming events

Showing: 12 ▾

Show filters

List

Calendar

NOV 19 2025, 10:00 AM

Safe Researcher Training

ONLINE

TRAINING SAFE RESEARCHER WORKSHOP

NOV 20 2025, 10:00 AM

Data in the spotlight: Longitudinal data

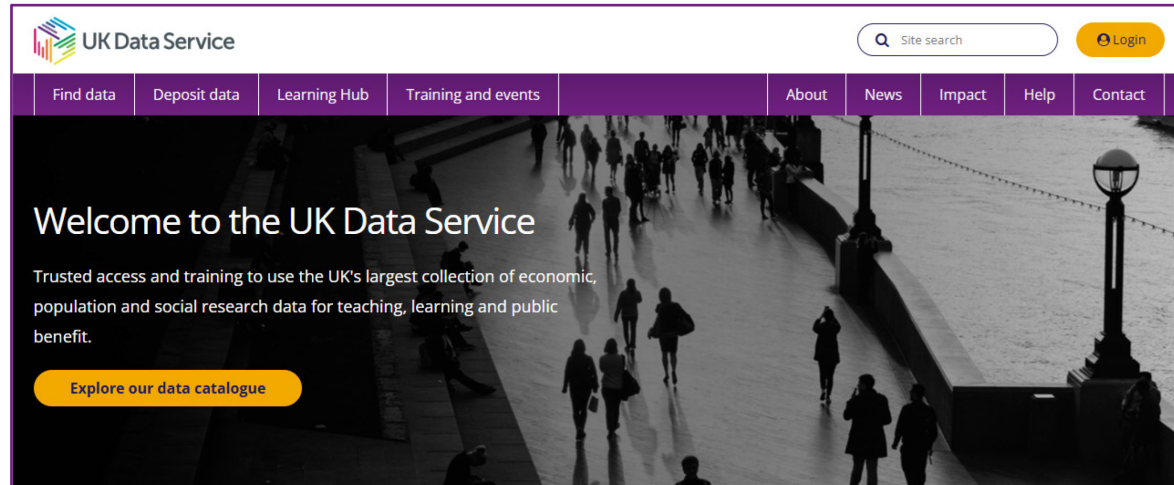
ONLINE

TRAINING DATA SKILLS WORKSHOP

[Training and events - UK Data Service](#)

UK Data Service (UKDS) - Intro

What is the UK Data Service?



ukdataservice.ac.uk

... a partnership, funded by UKRI ESRC, between the UK Data Archive at the University of Essex, the Cathie Marsh Institute for Social Research at the University of Manchester, Jisc UK, EDINA from the University of Edinburgh, and the Department of Information Studies and Centre for Advanced Spatial Analysis at the University College London.

- A comprehensive resource funded by the ESRC.
- A single point of access to a wide range of secondary social science data, UK's largest collection of social, economic and population research data.
- Data curation and access as well as support, training and guidance.

Data at the UK Data Service

Data @ the UK Data Service (10,205 studies)

Open data (1,519)

Safeguarded data (8,214)

Controlled data (265)
SecureLab data, remote access
SecureLab data, Safe Room access

Who is it for?

- academic researchers and students
- government analysts
- charities and foundations
- business consultants
- independent research centres
- think tanks



Sources of data

- national statistical authorities
- UK government departments
- intergovernmental organisations
- research institutes
- individual researchers



Our data collections by access level

Data access conditions	Access level
Open Licence	Open
End User Licence (EUL) [Authentication]	Safeguarded
Special Conditions (SC) [Authentication]	
Special Licence (SL) [Authentication, Accredited Researcher Status]	
SecureLab Data Access (remote) [Authentication, Accredited Researcher Status, Training + Test]	Controlled
SecureLab Data Safe Room Access (on-site) [Authentication, Accredited Researcher Status, Training + Test]	

The Government Statistical Service Policy for the release of social survey microdata ensures compliance with the

- Code of Practice for Official Statistics (CoP),
- Statistics and Registration Service Act (SRSA), 2007.

[Policy for social survey microdata](#)
[- Office for National Statistics](#)



Types of data collections



survey microdata

cross-sectional
panel/ longitudinal
international microdata



aggregate statistics

international macrodata



Census data

aggregate data
flow data
microdata
boundary data



qualitative/ mixed methods data

in-depth interview transcripts,
diaries, anthropological field
notes, answers to open-ended
survey questions, audio-visual
recordings and images

Data at the UK Data Service

UK Surveys	large-scale government funded surveys
Longitudinal	major UK surveys following individuals over time
International	multi-nation aggregate databanks (macro) and survey (micro) data
Qualitative	range of multimedia qualitative and mixed methods data
Census	Census data 1961 – 2011
Business	business microdata
Administrative	records for admin. data, for which ADRN has negotiated researcher access
Controlled International Microdata via IDAN	IAB data (Germany) CASD data (France) GESIS data (Germany)





**A collaboration between multiple Research Data Centres
from European countries, open to enlargement, to facilitate research
use of secured data,
particularly the administrative ones between these countries**



[IDAN – IDAN Website](#)

[IDAN - UK Data Service](#)

What longitudinal data are available via the UK Data Service?

Longitudinal data

- longitudinal surveys involve repeated surveys of the same individuals at different points in time
- large samples, nationally- representative
- new respondents are added regularly to keep numbers up
- allow researchers to analyse change at an individual level
- more complex to manage and analyse.



Longitudinal data – some examples

- 1958 National Child Development Study (NCDS)
- 1970 British Cohort Study (BCS70)
- Millennium Cohort Study (MCS)
- British Household Panel Survey (BHPS)
- Understanding Society/
UK Household Longitudinal Study (UKHLS)
- Families and Children Study (FACS)
- English Longitudinal Study of Ageing (ELSA)
- Next Steps (LSYPE 1) (Longitudinal Study of Young people in England - LSYPE) (1989-90)
- Our Future (LSYPE 2)
- Growing Up in Scotland (GUS)
- CLOSER (Cohort and Longitudinal Studies Enhancement Resources).

British Birth Cohort Studies (CLS)

Impact of childhood conditions on education, later life health and economic circumstances and understanding children and families in the UK.

- **National Child Development Study** follows a cohort (17,000) born in a single week in 1958 - data collected at birth & ages 7, 11, 16, 23, 33, 42, 46, 50 (7 Up TV series), 55, 62, 68 (2026); add. biomedical survey (9,000) at age 45.
- **1970 British Cohort Study** follows a cohort (17,000) born in a single week in 1970 - data collected around birth & ages 5, 10, 16, 26, 30, 34, 38, 42, 46 (biomedical follow-up), 51, 56 (2026).
- **Millennium Cohort Study** focuses on children born in 2000/ 2001(19,000) - sweeps at ages 9 months, 3, 5, 7, 11, 14, 17, 23.

wide range of social, economic, health, medical and psychological issues.

Cont..British Birth Cohort Studies (CLS)

National Child Development Study (1958)

- has become a unique resource for investigating social mobility and the impact of childhood conditions on later life.
- some data collections in this series have a special focus (e.g. partnership history, employment history, social participation and identity, response and death, parent migration, behavioural studies and essays).

British Cohort Study 1970 (BCS70)

- design and coverage is similar to NCDS – some of the recent sweeps used common questions
- provides important opportunities for inter-cohort comparison.
- again, some data collections in this series have a special focus (e.g. education, partnership history, employment history).

Millennium Cohort Study

- provides important opportunities for inter-cohort comparison after a long gap of 30 years since 1970.
- again, some data collections in this series have a special focus (e.g. mothers who received fertility treatment, physical activity, teacher survey).

MCS age 14 - Time use diary app and activity monitor

The MCS Age 14 Survey was the first large-scale population study in the world to incorporate objective measurement of physical activity using accelerometers alongside self-reported time use for the same period into a social survey. It's also the first large-scale study to make use of new technologies, including both a specially-developed online diary and bespoke smartphone app, to collect this data. We embraced new technologies both in order to capture this highly detailed data in all its richness, and also to make the tasks more appealing to this age group, and thereby help engage them and improve response rates.

Paper diary

WHAT WERE YOU DOING? EARLY MORNING MORNING

WHERE WERE YOU?

WHO WERE YOU WITH?

HOW MUCH DID YOU LIKE IT?

CENTRE FOR
LONGITUDINAL
STUDIES

App diary

What were you doing at 4:00am?

Please select one option only

Sleep and personal care

School, homework, and education

Paid or unpaid work

Chores, household, and looking after people or animals

Eating and drinking

What time did you finish sleeping and resting?

08 00

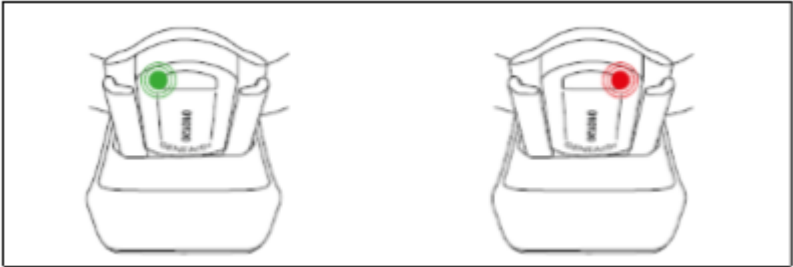
09 01

10 02

NEXT

CENTRE FOR
LONGITUDINAL

Source: Gilbert, Calderwood, Fitzsimons, CLS



Activity Monitor



CLS studies

The Centre for Longitudinal Studies (CLS) leads the scientific development and operational management of a unique series of UK national longitudinal studies.

Core studies:

- 1958 National Child Development Study (NCDS) 1958
- 1970 British Cohort Study (BCS70) 1970
- Next Steps (Next Steps) 1989-90
- Millennium Cohort Study (MCS) 2000-02
- Early Life Cohort Feasibility Study (Test 2021-2024)
- Generation New Era 2026

ncds
National Child
Development Study

BCS70
1970 British
Cohort Study

**NEXT
STEPS**
LEARNING FROM YOUR GENERATION

**MILLENNIUM
COHORT STUDY**

**GENERATION
NEW ERA**
A STUDY OF
CHILDREN BORN
IN THE 2020s

Associate studies:

- COVID Social Mobility & Opportunities Study Y11 in 2020/21 (2 waves, collected in 2021/22, 2022/23) COSMO
- Growing Up in the 2020s study start of 2020s (4 waves, Y8, Y9, Y11, Y12)
- Growing up in Digital Europe 8year olds and their main caregiver
- Children of the 2020s study 2021 (9 months to 5 years)

**Growing
Up**
in the 2020s

GUIDE
Growing up in
Digital Europe

**Children
of the
2020s**

CLS – associate studies

- Generation New Era

is a new UK-wide birth cohort study aiming to follow the lives of 30,000 children born in 2026, and their families.

- COVID Social Mobility & Opportunities Study

COSMO is the largest study of its kind to examine the impact of the Covid-19 pandemic on educational inequality and social mobility. [UKDS]

- Growing Up in the 2020s study



is the country's first comprehensive long-term study tracking adolescents' development and educational outcomes following the Covid-19 pandemic. It aims to understand how factors like school, home life and relationships shape young people's lives and futures including their mental health, wellbeing and academic achievement.

-> This is designed to help inform government policies and strategies to support those identified as at risk of poorer outcomes.

- Growing up in Digital Europe

is Europe's first comparative longitudinal study of children and young people's wellbeing. The aim of the study is to track children's wellbeing and psychosocial development, in combination with key indicators of children's homes, neighbourhoods, and schools, using harmonised data collection across Europe. It also includes detailed questions on digital use, activities, addiction, and enjoyment.

- Children of the 2020s study

Data collection includes assessments of child development, neighbourhood and family context, family structure, health and mental health, the home learning environment, and formal and informal childcare provision and preschool education. Alongside the main surveys and linkages, the study will collect additional data using an innovative smartphone app called BabySteps, capturing rich developmental and home environment measures between study sweeps at low cost. Measures will include a combination of short questionnaires and video/audio recordings. [ONS SRS]

DofE commissioned and funded series of national studies about different stages of childhood and adolescence in England (also 'Five to Twelve', carried out by NatCen, focusing on Primary School age).

CLS associate studies – COSMO

COVID Social Mobility & Opportunities Study (COSMO)

Content

The study covers how the disruption to schooling during the pandemic has affected young people's educational attainment and wellbeing, as well as their longer-term educational and career outcomes.

Wave 1 topics:

- experiences of the pandemic
- financial impacts in the home
- disruption to schooling
- access to home learning and school provision
- attitudes to education
- mental health and wellbeing
- GCSE assessment in 2021 and the crucial post-16 transition.

Wave 2 topics:

- their activities since Wave 1
- university applications
- labour market and apprenticeship experiences
- vocational training
- core topics covered in Wave 1 such as mental health and wellbeing.

Linkage

The study has been designed for linkage to administrative data from the National Pupil Database, the Longitudinal Educational Outcomes (LEO) dataset, as well as other sources, such as:

- participation in the National Tutoring Programme
- the Department for Work and Pensions (DWP)
- HM Revenue and Customs (HMRC)
- Universities and Colleges Admissions Service (UCAS)
- Higher Education Statistics Agency (HESA)
- Student Loans Company (SLC).

COVID-19 surveys @ CLS

COVID-19 survey

During the coronavirus pandemic, we have been running a series of surveys to find out about the experiences of the participants in five national longitudinal cohort studies. The aim is to understand the economic, social and health impacts of the COVID-19 crisis, the extent to which the pandemic is widening or narrowing inequalities, and the lifelong factors which shape vulnerability and resilience to its effects.

We have now completed three waves of the survey. Participants in all four of the national longitudinal cohort studies that we manage at CLS, as well as participants in the MRC National Survey of Health and Development, have taken part. In March 2021, study participants who had taken part in any of these three COVID-19 surveys were asked to provide a blood sample to be analysed for COVID-19 antibodies.



cls.ucl.ac.uk/covid-19-survey/



CLOSER blog: How the UK's longitudinal studies are helping society navigate the COVID-19 pandemic

17 September 2020

COVID-19 data @ UKDS

  ukdataservice.ac.uk/find-data/browse/covid-19/
<p>Welfare at a (Social) Distance, 2020-2021: Wave 1</p> <p>Coverage: 2020; United Kingdom</p> <p>Topic: See data catalogue record for full topic listing.</p> <p>View ></p>
<p>COVID-19 Survey in Five National Longitudinal Cohort Studies: Millennium Cohort Study, Next Steps, 1970 British Cohort Study and 1958 National Child Development Study, 2020-2021</p> <p>Coverage: 2020 - 2021; United Kingdom</p> <p>Topic: See data catalogue record for full topic listing.</p> <p>View ></p>
<p>Understanding Society: COVID-19 Study, 2020-2021</p> <p>Coverage: 23 April 2020 - 10 May 2021; United Kingdom</p> <p>Topic: See data catalogue record for full topic listing.</p> <p>View ></p>

COVID-19 Survey in Five National Longitudinal Studies

3 Waves have been completed.

In March 2021, study participants who had taken part in any of these three COVID-19 surveys were asked to provide a blood sample to be analysed for COVID-19 antibodies.

Wave 1 (May 2020; 18,000 participants)

The aim of the first survey was to collect insights into the lives of study participants including their physical and mental health and wellbeing, family and relationships, education, work, and finances during the first national lockdown. The questions focused mainly on how participants' lives had changed from just before the outbreak of the pandemic in March 2020 up until their response to the survey during the height of the lockdown restrictions in May 2020.

Wave 2 (September/October 2020; 26,000 participants)

The aim of the Wave 2 survey was to capture how participants' lives had changed from Wave 1 (in May 2020) until late summer/early autumn 2020. The topic areas mirrored closely those for Wave 1, with additional questions about:

- Health care
- Financial transfers
- Life events
- Children's schooling in summer and autumn term

Wave 3 (February/ March 2021; 28,000 participants)

The majority of the content comprised questions included in the first (May 2020) and second (September-October 2020) surveys. Other questions in Wave 3 were new additions, including questions about the vaccination programme and long COVID. Work and finances, a topic covered in the previous waves, featured again in this wave, but with additional questions on pay and household income.

The UK Household Longitudinal Study



- capturing life in the UK in the 21st century; largest longitudinal household panel study of its kind, provides vital evidence on life changes and stability.
- started in 2009: UKHLS or 'Understanding Society' ; First data: 2010, 14 waves available ([Wave 15 due 12/2025](#)).
- study of the socio-economic circumstances and attitudes of 100,000 individuals in 40,000 British households.
- UKLHS replaces and incorporates the BHPS (1991-2009 , 5500 hh's), retaining the latter's longevity whilst adding:
 - to the sample size.
 - to the scope of the study (new components: innovation panel, greater detail on ethnic minority groups, qualitative and biomedical data collections).
- coverage includes:
 - current employment and earnings; employment status; parenting and childcare arrangements; family networks; benefit payments; political party identification; household finances; environmental behaviours; consents to administrative data linkage (health and education).

Understanding Society – health assessment

Nurse health assessment

In Wave 2 and Wave 3, adult participants received a follow-up [health assessment](#) visit from registered nurses who collected a range of bio-medical measures from around 20,000 adults.

The assessments included:

- Blood pressure
- Weight
- Height
- Waist
- Body fat
- Grip strength
- Lung function
- Blood samples.

Data: SN 7251

“Understanding Society:
Waves 2-3 Nurse Health
Assessment, 2010-2012”

Webinar

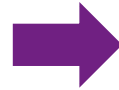
An Introduction to Survey Data on Biomarkers



www.youtube.com/watch?v=BdI5UGg8uJ4&feature=youtu.be

Biomarker in Understanding Society

Biomarkers, genetics and epigenetics



[Biomarkers, Genetics and Epigenetics - Understanding Society](#)

Covid-19

Education

Employment

Ethnicity and immigration

Family and households

Health and wellbeing

Housing

Money and finances

Politics and social attitudes

Survey methods

Transport and environment

Young people

What health condition questions are asked in the main survey?

In Wave 1 of Understanding Society participants were asked: 'Has a doctor or other health professional ever told you that you have any of these conditions?'. Seventeen conditions were listed: asthma, arthritis, congestive heart failure, coronary heart disease, angina, heart attack, stroke, emphysema, hyperthyroidism, hypothyroidism, chronic bronchitis, any kind of liver condition, cancer, diabetes, epilepsy, high blood pressure and clinical depression. In Wave 7 multiple sclerosis and HIV were added to the list of conditions. The full list of [variables relating to health conditions can be found here](#).

Understanding Society also asks participants whether they have [visited a hospital or out patient clinic in the last twelve months](#), and about [their health behaviour](#); whether they take part in sports, the amount of walking they do and how often they eat fruit and vegetables.

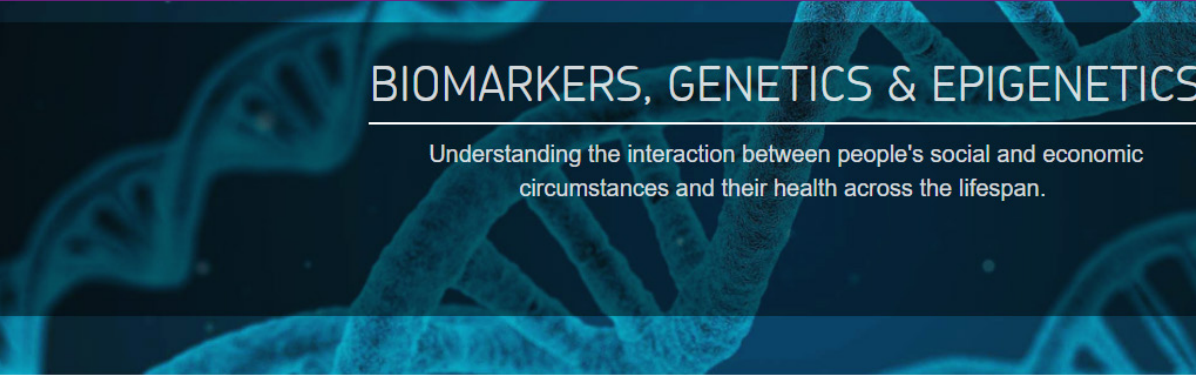
Genomics and proteomics for social scientists

The rich longitudinal data in Understanding Society allows social science researchers to study socially patterned health outcomes at the population level. Using biological data for the first time can be daunting, so to help social science researchers who may be new to this area the health and [biomarker](#) team at Understanding Society have put together short video guides on using our biological datasets.

Biomarker in Understanding Society - continued

Table 2 Biomarkers available in *Understanding Society*

Biomarker	Applications
Cholesterol (total and HDL)& triglycerides	'Fat in the blood' associated heart disease
Glucose intolerance: Glycated haemoglobin - HbA1c	Undiagnosed or poorly managed diabetes
Inflammatory markers - C-reactive protein (CRP), fibrinogen	Measures of inflammation – due injury or infection – acute or chronic – response to stress
- Cytomegalovirus (CMV) seropositivity	Immunosuppression - wear & tear on immune system, chronic stress, associated diabetes
Anaemia – haemoglobin (Hb), ferritin	Marker for poor nutrition; increases with age, sig. health consequences
Liver function tests (LFTs) - Alkaline phosphatase (ALP), Alanine transaminase (ALT), Aspartate transaminase (AST), Gamma glutamyl transferase (GGT), albumin	Associated alcohol, drugs, obesity, consequence of other diseases
Kidney function – creatinine, urea	Kidney diseases increases with age, associated other diseases
Hormones	Associated with stress processes, building muscles, ageing
Testosterone	Marker aggression
Insulin-like growth factor 1 (IGF-1)	Growth & development - associated diet, diabetes and cancer
Dihydroepiandrosterone sulphate (DHEAs)	Associated CVD, muscle strength, cognition



BIOMARKERS, GENETICS & EPIGENETICS

Understanding the interaction between people's social and economic circumstances and their health across the lifespan.

Home > Topics

“ Understanding Society brings together the biology and the social science. It allows us to more precisely measure health and illness, whether focussing on specific conditions, undiagnosed illness, the effectiveness of treatment, or the risk factors for ill health.

[Biomarkers, Genetics and Epigenetics - Understanding Society](#)

UKHLS – data linkage

Data linkage - the process of linking together two or more streams of data - opens up new research opportunities. In the case of Understanding Society, it allows researchers to make use of additional information that the survey does not collect in the annual interviews.

3 types of data linkage:

- geographical identifiers
(range from individual countries within the UK to Local Authority Districts, Super Output Areas down to grid references)
- administrative data linkage
(datasets, which will be linked to Understanding Society, cover areas of: education, health, economic circumstances, transport)
- organisations
(identifiers of the schools that children attend or recently attended)

[Data releases - Understanding Society](#)

UKHLS – data linkage, continued

- education: linked to the English NPD and to Scottish education data
 - environment: linked to DVLA records
 - linked auto-enrolment pension (NEST) data available
 - geographical linkage to neighbourhood indicators available
 - linked credit history (CRA) available
-
- linked health data for Scotland will be released in 2025
 - linked annual energy consumption meter data will be released in 2025

[Data releases - Understanding Society](#)

Understanding Society and Harmonised BHPS

SN 6614

Understanding Society: Waves 1-14, 2009-2023 and Harmonised BHPS: Waves 1-18, 1991-2009

Wave 15 will be available in December 2025!

SN 6676

Understanding Society: Waves 1-14, 2009-2023 and Harmonised BHPS: Waves 1-18, 1991-2009, Secure Access.

Understanding Society data containing:

- the latest wave,
- updated files from previous waves,
- all 18 waves of BHPS repurposed to be used alongside Understanding Society data.

Understanding Society: COVID-19 Study

SN 8644 - Understanding Society: COVID-19 Study, 2020-2021

The *Understanding Society COVID-19 Study, 2020-2021* is a regular survey of households in the UK. The aim of the study is to enable research on the socio-economic and health consequences of the COVID-19 pandemic, in the short and long term.

The surveys started in April 2020 and took place monthly until July 2020.

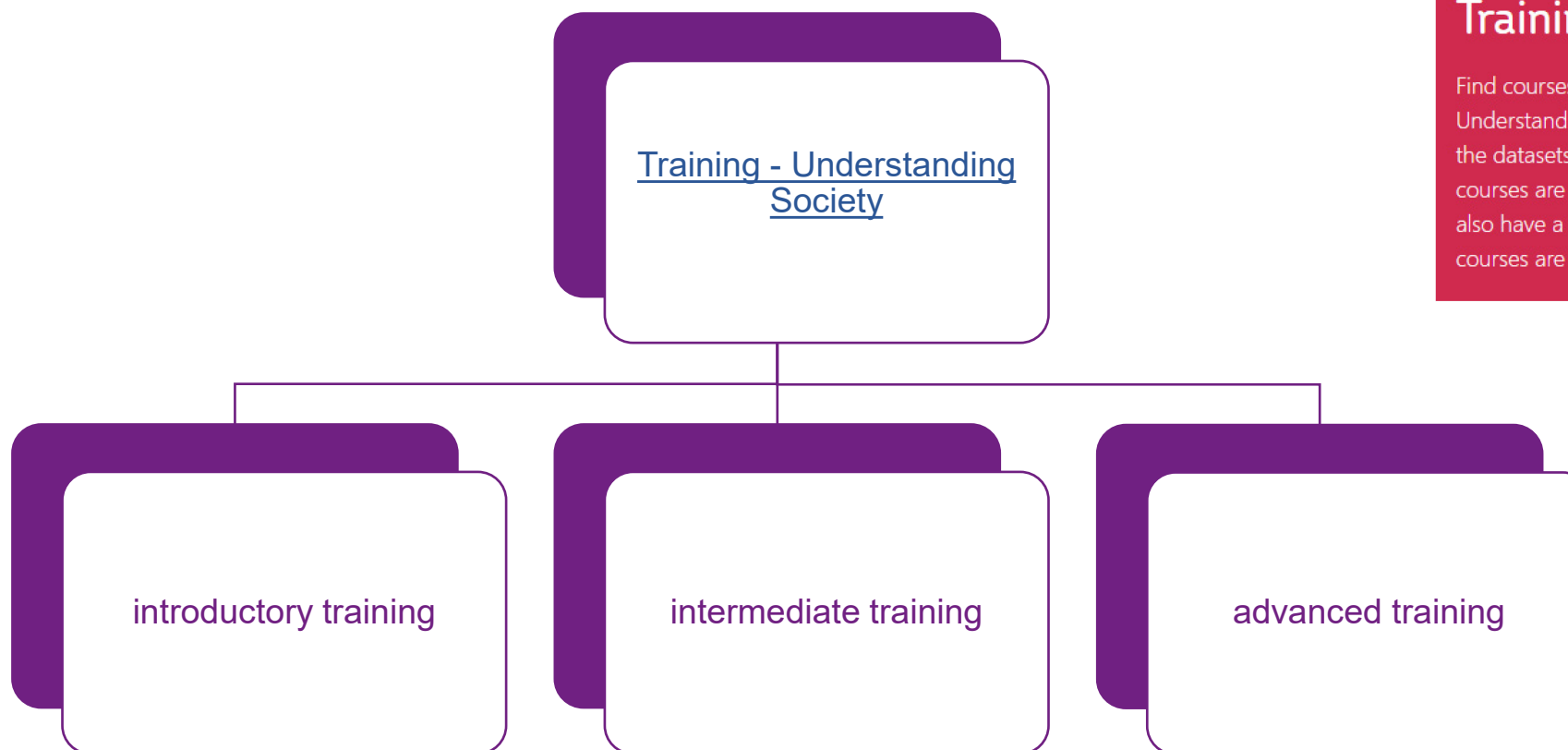
From September 2020 they took place every other month until March 2021 and the final wave was fielded in September 2021.

They complement the annual interviews of the *Understanding Society* study. The data can be linked to data on the same individuals from previous waves of the annual interviews ([SN 6614](#)) using the personal identifier pidp. However, the most recent pre-pandemic (2019) annual interviews for all respondents who have taken part in the COVID-19 Study are included as part of this data release.

MAIN TOPICS

The survey contains information about mental and physical health, health behaviours, caring, housing, employment, job search, income, education, family relationships, return to school and children's strength and difficulties questionnaire, young adults' future intentions. The survey also includes data on COVID-19 antibodies analysed from blood samples.

Understanding Society: Training



Training

Find courses to help you get started with Understanding Society, explore specific aspects of the datasets, or hone your advanced data skills. Our courses are delivered online and in-person – we also have a library of training videos. All our courses are free.

Understanding Society: Data



81 Studies available @ UK Data Service



[UK Data Service catalogue](#)



[Understanding Society is part of a world-wide family of household panel studies](#) (see international comparison page)

English Longitudinal Study of Ageing

- collects data from a representative sample (~10 000) of the population aged 50+ in England on a range of indicators.
 - health
 - economic circumstances
 - well-being
 - social participation.
- 11 waves of data collection have been conducted so far between 1998-2024.



English Longitudinal Study of Ageing (ELSA): Waves 0-11, 1998-2024

- ELSA - is a longitudinal survey of ageing and quality of life among older people that explores the dynamic relationships between health and functioning, social networks and participation, and economic position as people plan for, move into and progress beyond retirement.
- 1 in 3 people in England are now over 50, which means it's really important to understand what life is like for England's ageing population.
- ELSA helps the government plan health care services and pensions systems to best meet the needs of this growing population.

The main objectives of ELSA are to:

- construct waves of accessible and well-documented panel data;
- provide these data in a convenient and timely fashion to the scientific and policy research community;
- describe health trajectories, disability and healthy life expectancy in a representative sample of the English population aged 50 and over;
- examine the relationship between economic position and health;
- investigate the determinants of economic position in older age;
- describe the timing of retirement and post-retirement labour market activity; and
- understand the relationships between social support, household structure and the transfer of assets.

Wave 3 Life History Essays (ELSA)

A set of 558 transcripts of short essays collected from respondents to the Wave 3 Life History Interview are provided in RTF format, in a separate download zip file. The essays were written in response to section 3 of the Life History self-completion questionnaire.

"Thinking back over your life, with its wide variety of enjoyable as well as difficult experiences, please write about three aspects of your life that have been especially important to you, and how they affected you."

ELSA COVID-19 Study, Waves 1-2, 2020

Topics covered in the ELSA COVID-19 study include:

- Demographics
- Mental health
- Financial security
- Covid-19-related health
- Employment and work
- Financial situation
- Volunteering and care
- Physical health and health behaviours
- Social connection isolation and technological inclusion
- Income, pensions and retirement

[UK Data Service catalogue - ELSA COVID 19 study](#)

Gateway to Global Ageing Data

GATEWAY TO GLOBAL AGING DATA

Welcome | [Please Register or Login](#)

Surveys at a Glance

Concordance across surveys

Documentation and presentations

Graphs and Tables

Publications based on surveys

Download Data and Links

Help

Search all surveys by keyword >

Search harmonized data by sub-topics >

STUDY OVERVIEW

CORE INTERVIEW

SELF-COMPLETION

LIFE HISTORY

HEALTH ASSESSMENT

EXIT INTERVIEW

	HRS	MHAS	ELSA	SHARE	CRELES	KLoSA	JSTAR	TILDA	CHARLS	LASI
	United States	Mexico	England	20+ European Countries and Israel	Costa Rica	Korea	Japan	Ireland		
1992-93	HRS W1 AHEAD 1993 W1									
1994-95	HRS W2 AHEAD 1995 W2									
1996-97	HRS W3									
1998-99	HRS W4									
2000-01	HRS W5	MHAS W1								
2002-03	HRS W6	MHAS W2	ELSA W1							
2004-05	HRS W7		ELSA W2	SHARE W1	CRELES W1					
2006-07	HRS W8		ELSA W3	SHARE W2	CRELES W2	KLoSA W1	JSTAR W1			
2008-09	HRS W9		ELSA W4		CRELES W3	KLoSA W2	JSTAR W2			
2010-11	HRS W10		ELSA W5	SHARE W4	CRELES W4	KLoSA W3	JSTAR W3	TILDA W1	CHARLS W1	
2012-13	HRS W11	MHAS W3	ELSA W6	SHARE W5	CRELES W5	KLoSA W4	JSTAR W4	TILDA W2	CHARLS W2	
2014-15	HRS W12									

Gateway to Global Aging Data Advanced Workshop

Beate Lichtwardt – Accessing ELSA data via the UK Data Service
UK Data Service
University of Essex
United Kingdom

Drystan Phillips – Cross-country analysis using Harmonised ELSA and RAND HRS data
Gateway to Global Aging Data
Center for Economic and Social Research
University of Southern California
United States of America

Webinar, 20 October 2016

UK Data Service

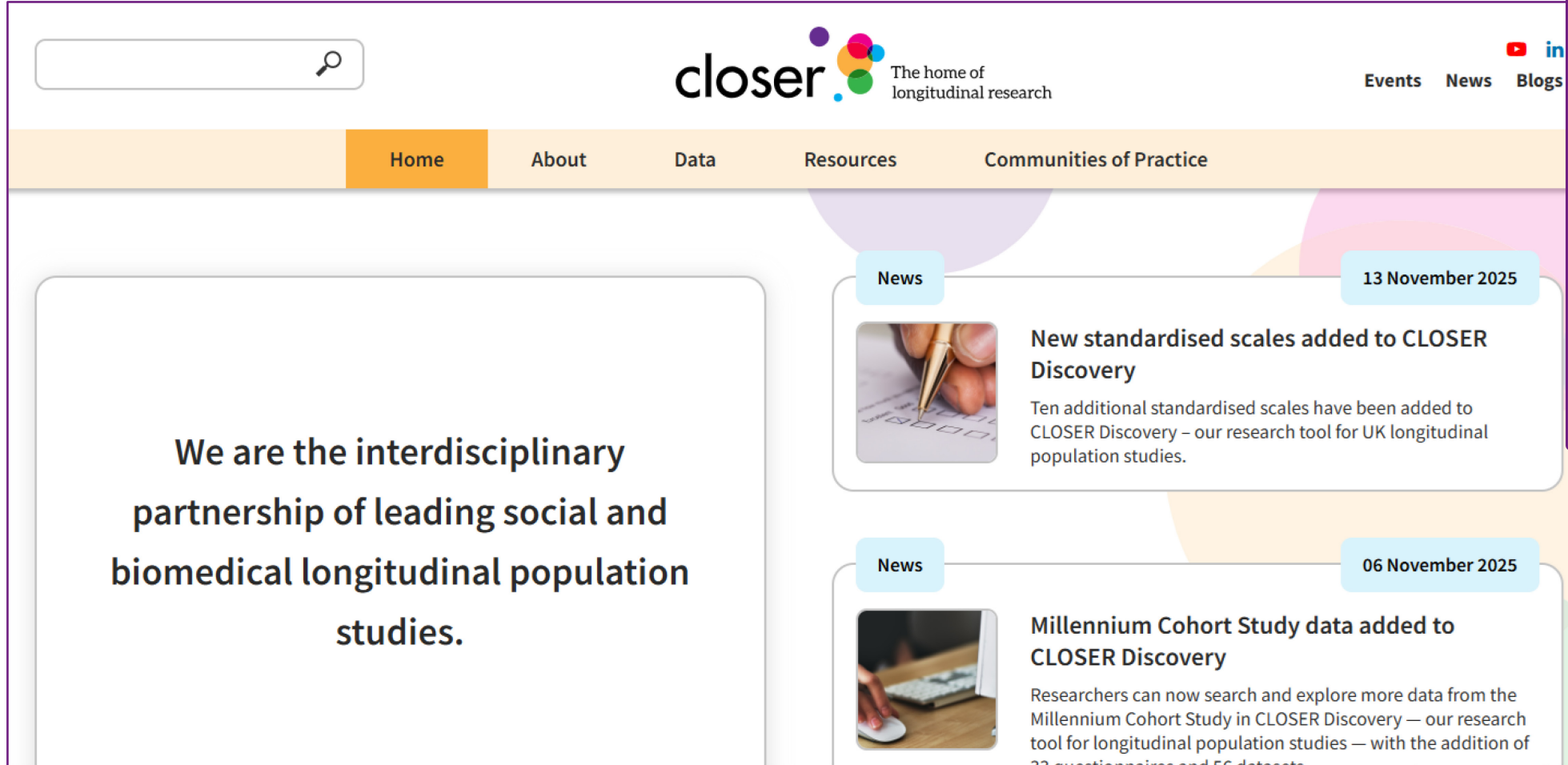
0:04 / 46:26

Webinar: Gateway to Global Aging Data

[Webinar: Gateway to Global Aging Data](#)

[Gateway to Global Aging Data](#)

CLOSER



The screenshot shows the CLOSER website homepage. At the top, there is a search bar on the left, the CLOSER logo with the tagline 'The home of longitudinal research' in the center, and social media links for YouTube, Instagram, and LinkedIn on the right. Below the header is a navigation bar with links for Home, About, Data, Resources, and Communities of Practice. The main content area features a large introductory text on the left and a news section on the right. The news section contains two articles, each with a 'News' label, a date, a thumbnail image, a title, and a brief description.

We are the interdisciplinary partnership of leading social and biomedical longitudinal population studies.

News 13 November 2025

New standardised scales added to CLOSER Discovery

Ten additional standardised scales have been added to CLOSER Discovery – our research tool for UK longitudinal population studies.

News 06 November 2025

Millennium Cohort Study data added to CLOSER Discovery

Researchers can now search and explore more data from the Millennium Cohort Study in CLOSER Discovery – our research tool for longitudinal population studies – with the addition of 22 questionnaires and 56 datasets.

Areas of work:

- Data discoverability
- Policy and Dialogue
- Training and capacity building
- Data innovations.

[CLOSER, the home of longitudinal research](#)

Harmonised Longitudinal Data – CLOSER @ UKDS

[Find data](#)[Deposit data](#)[Learning hub](#)[Training and events](#)[About](#)[News](#)[Impact](#)[Help](#)[Contact](#)

[Home](#) > [Data catalogue](#) > [Series](#) > [Series](#)

CLOSER

[Abstract](#)[FAQ's](#)[Resources](#)[Access data](#)

Access data

GN 33529
CLOSER Training Datasets

▼

GN 33530
CLOSER Work Package 1: Harmonised Height, Weight and BMI in Five Longitudinal Cohort Studies

▼

GN 33536
CLOSER Work Package 2: Harmonised Socio-Economic Measures in Four Longitudinal Cohort Studies

▼

GN 33556
CLOSER Work Package 9: Harmonised Childhood Environment and Adult Wellbeing Measures in Three Longitudinal Cohort Studies

▼

GN 33572
CLOSER Work Package 20: Harmonised Mental Health Measures at Age 10/11 in Selected British Cohorts

▼

Studies

Series

beta.ukdataservice.ac.uk/datacatalogue/series/series?id=2000111

Copy series link

Growing Up in Scotland (GUS)



Following several cohorts (child cohort 2002-03, birth cohorts for 2004-2005 and 2010-2011) of Scottish children from the early years, through childhood and beyond:

- health
- neighbourhood
- development
- education
- leisure
- friendships
- consent from parents to link data collected from them and their children to administrative data held by health and education authorities.

Cont...Growing Up in Scotland (GUS)

While the main aim of the study is to provide information to support policymaking, it is also intended to be a broader resource that can be drawn on by academics, voluntary sector organisations and other interested parties.

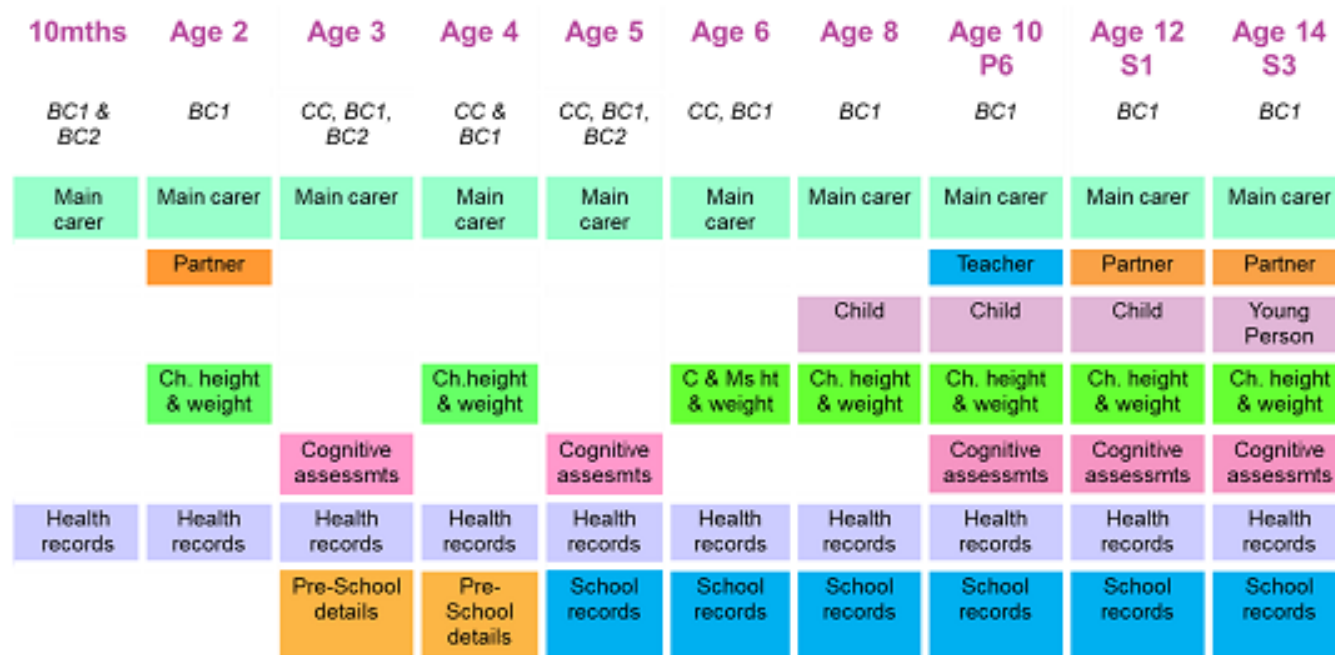
Fields of work

- Cognitive, social, emotional and behavioural development.
- Physical and mental health and wellbeing.
- Childcare, education and employment.
- Home, parenting, family, community and social networks.
- Involvement in offending and risky behaviour.



GUS

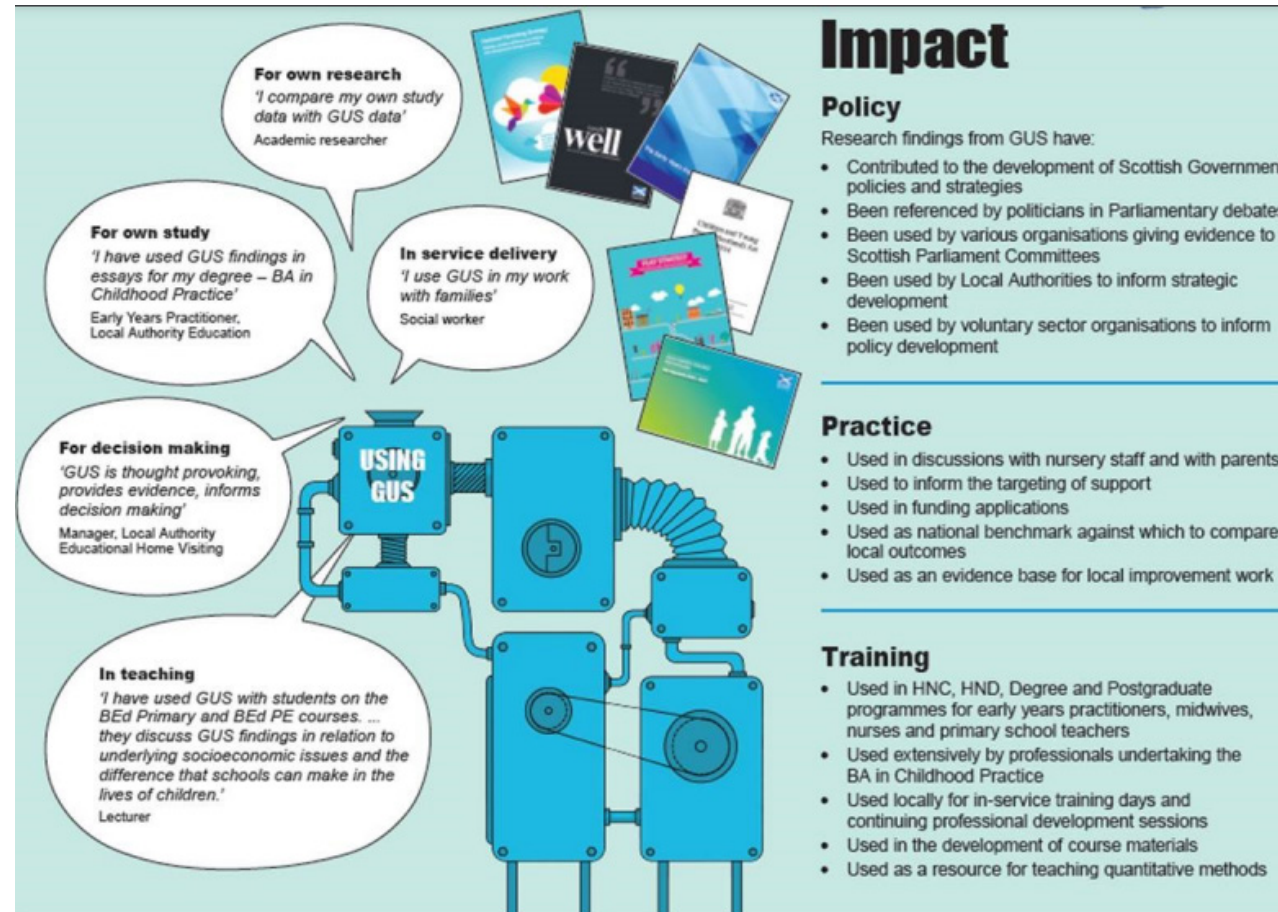
The diagram below shows the sources of information for GUS. Consent is collected from parents to link to health and school records.



	About the study	Participants
Age 6	2008/09	2010/11
Age 8		2012/13
Primary 6 (Age 10)		2014/15
S1 (Age 12)		2017/18
S3 (Age 14)		2019/20
S6/left school (Age 17)		2021/23
Age 19 or 20		2025

Growing Up in Scotland | Study design and timeline

Growing Up in Scotland | Key findings and impact



The impact of Understanding Society

How our data makes a difference for organisations from charities to government.

Understanding Society data shows impact of financial security on mental health

New report from the RSA highlights potential benefits of universal basic income



Think tank uses Understanding Society to assess Universal Credit in the pandemic

Independent think tank Bright Blue used our data to assess claimants' financial difficulties



Think tank says poverty in the UK worsening

Centre for Social Justice says UK in danger of sliding back towards Victorian era.

6 February 2024



Unhappiness on the rise for young people

The Children's Society uses Understanding Society to look at how children's wellbeing changes over time.

3 September 2024

Ethnicity and immigration

2

Family and households

16

Health and wellbeing

16

Income and expenditure

17

Money and Finances

7

Politics and social attitudes

5

Social mobility


7

Informing policy

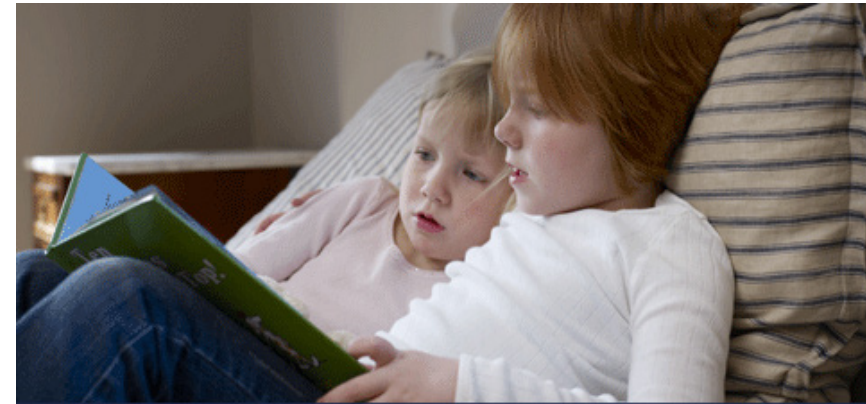
Poor reading 'could cost UK £32bn in growth by 2025'

Campaign links literacy failings with joblessness, as authors, charities and CBI unite to improve reading standards



 A report has found that England is one of the most unequal countries for children's reading levels, second in the EU only to Romania. Photograph: DCPhoto /Alamy

The fear that 1.5 million British children will reach the age of 11 unable to "read well" by 2025 has prompted the launch on Monday of a new campaign backed by a coalition of businesses, charities, bestselling authors and teaching professionals.



MCS continues to inform Read On. Get On. campaign
The Ready to Read report, which uses findings from the Millennium Cohort Study, has encouraged parents in Northern Ireland to read to their children at school

Read On. Get On.



Read On. Get On. is a campaign to get all children reading well in England by the age of 11. It was launched in 2014 by a coalition of charities and education organisations committed to improving the reading skills of a fifth of all children in England, and close to a third of disadvantaged children who leave primary school. This prevents them from achieving their potential in school and creates obstacles to a fairer society.

[Read On. Get On. \(2014\) | National Literacy Trust](#)

NEWS

Improving the nation's numeracy: what can we learn from the British cohorts?

4 July 2024

What can cohort evidence tell us about the predictive power of early maths skills and what policymakers can do to boost the nation's numeracy?

[Poor reading 'could cost UK £32bn in growth by 2025' | Literacy | The Guardian](#)

Informing Policy - Millennium Cohort Study (MCS)

Home | News, events and publications | Impact case studies
Adolescent mental health: improving young people's lives using evidence from national cohort data

News, events and publications

- News
- Events
- Publications
- Impact case studies
- Evidence briefings

Adolescent mental health: improving young people's lives using evidence from national cohort data

February 2021

An estimated 16% of all 14-year-olds in the UK in 2015 suffered from mental ill-health. Research which identified the scale of mental ill-health among the UK's adolescents, and studied its drivers, has focused national attention on the problem, prompting new government policy and strategies for improving young people's mental health.



Celebrating Impact: improving young p...

Watch later

Share

Prevalence of depression at age 14



Infographic showing proportion of 14-year-olds reporting high levels of depressive symptoms

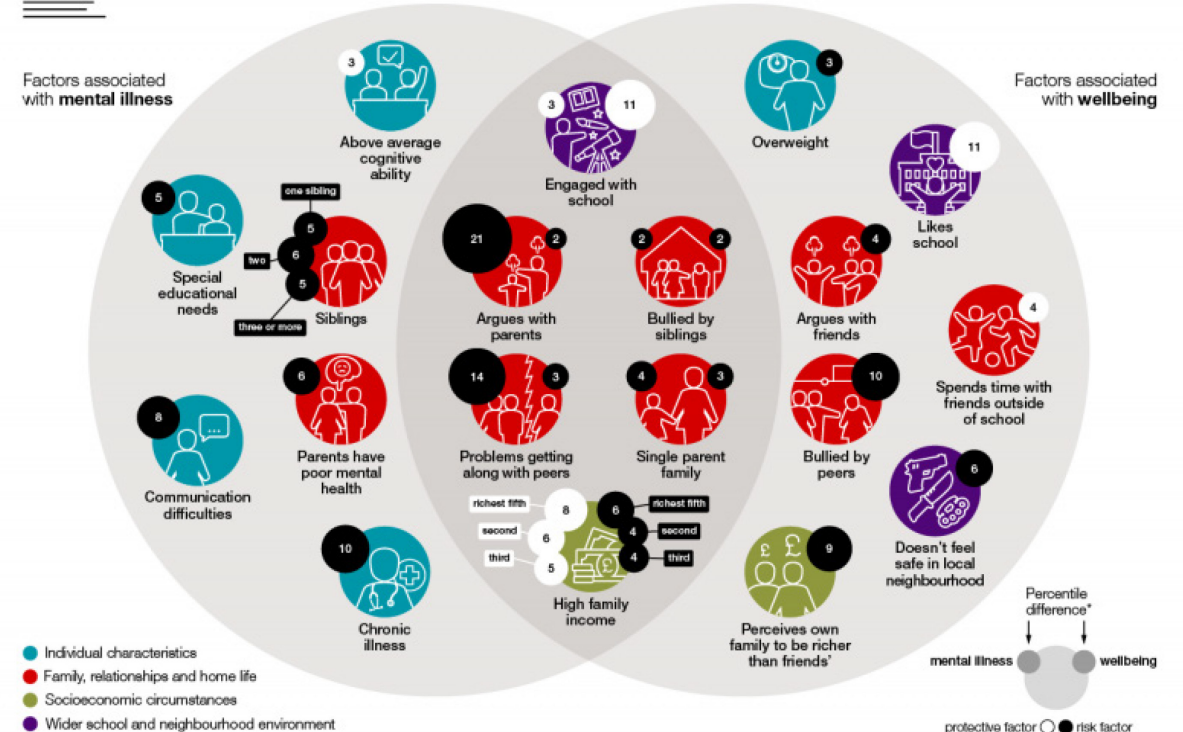
CENTRE FOR
LONGITUDINAL
STUDIES

Children's mental illness and wellbeing at age 11

Findings from the Millennium Cohort Study

Factors associated
with **mental illness**

Factors associated
with **wellbeing**



Hosted by



Funded by



All factors included in the infographic are statistically significant at (at least) the 5% level. • Findings from Patalay, P. and Fitzsimons, E. (2016) Correlates of mental illness and wellbeing in children: are they the same? *Journal of the American Academy of Child and Adolescent Psychiatry* 55(9), pp. 771-783.

Percentile difference is the change in rank position between 1 and 100 away from the median or reference category.

[Improving adolescent mental wellbeing using national cohort data – UKRI](#)

Informing Policy - 1970 British Cohort Study (BCS)

Home | News, events and publications | Impact case studies | Reading for pleasure boosts cognitive development

News, events and publications

- News
- Events
- Publications
- Impact case studies**
- Evidence briefings

Reading for pleasure boosts cognitive development

February 2021

Research shows reading for pleasure helps children perform significantly better in maths as well as English. This has directly influenced national and international policymakers, literacy organisations and schools to generate, fund and implement reading for pleasure campaigns and initiatives that have benefited the learning of millions of children worldwide.

 Celebrating Impact: Reading for pleasure... Watch later Share

THE CONVERSATION

Academic rigour, journalistic flair

COVID-19 Arts + Culture Business + Economy Cities **Education** Environment + Energy Health + Medicine Politics

Your vocabulary aged 40 depends on how much you read as a teenager

November 6, 2014 11:38am GMT

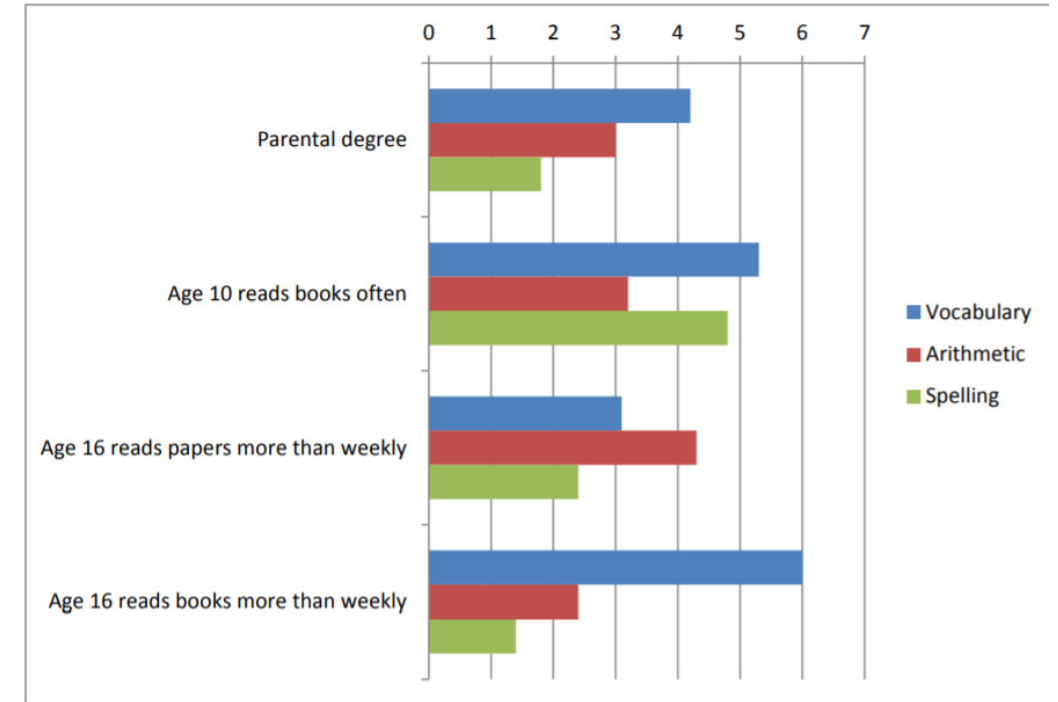


Figure 1: Percentage point differences in progress between age 10 and 16 in vocabulary, arithmetic and spelling

[BCS70 | Reading for pleasure](#)

[Your vocabulary aged 40 depends on how much you read as a teenager](#)

Considerations for policymaking

BRIEFING PAPERS

Carrying or using a weapon at age 17 – Evidence from the UK Millennium Cohort Study

Author: Aase Villadsen and Emla Fitzsimons

This report shows the overall prevalence of weapon carrying and use at age 17 and its co-occurrence with other types of offences. Various prior factors are examined in terms of their association with carrying or using a weapon, including individual characteristics, socioeconomic background, family environment, mental health, school and peer factors, and prior behaviours and experiences.

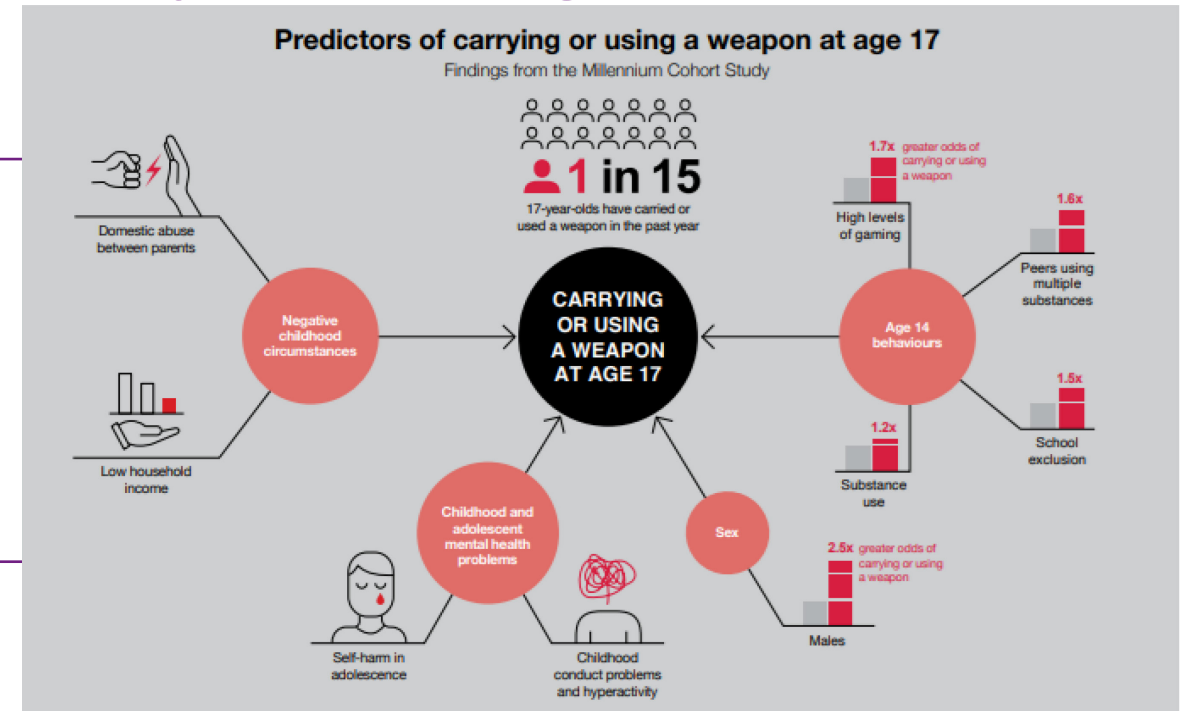
(2021)

NEWS

Improving the nation's numeracy: what can we learn from the British cohorts?

4 July 2024

What can cohort evidence tell us about the predictive power of early maths skills and what policymakers can do to boost the nation's numeracy?



Where to find and how to access data, resources and help?

Where to find longitudinal data?

Live demo - new Data Catalogue

[UK Data Service - catalogue](#)

Cont...Where to find longitudinal data?

Home > Search results > Studies

Search our data catalogue

Studies (1010) ? ReShare studies (3358) ? Series (81) ? Variables (5532944) ?

Refine filters

Time period ? ^

From 440 To 2025

Refine range >

Data access level ? ^

☐ Open (13)

☐ Safeguarded (876)

☐ Controlled (121)

Geographical location ? v

Data type ? ^

Selected:

☒ Cohort and longitudinal studies (1010)

☐ Administrative data (26)

☐ Business microdata (4)

☐ Census data (3)

☐ Cross-national survey data (26)

☐ Geospatial data (3)

☐ Historical data (4)

☐ International Data Access Network (36)

☐ Other surveys (6)

☐ Qualitative and mixed

View all >

Search [Search tips](#)

Search our data catalogue...

Search data

Exact phrase search

Per page 50

Sort by Relevance

Displaying 1 - 50 of 1010 results

Page 1 of 21

Study number: 1289

[Strathclyde Area Studies, 1976](#)

Data creators: Strathclyde Area Survey

Released/Updated: 1981-01-01

Study number: 1288

[Strathclyde Area Studies, 1975](#)

Data creators: Strathclyde Area Survey

Released/Updated: 1981-01-01

Study number: 5765

[Youth Cohort Time Series for England, Wales and Scotland, 1984-2002](#)

Data creators: Shapira, M., University of Edinburgh, Centre for Educational Sociology, Iannelli, C., University of Edinburgh, Centre for Educational Sociology, Croxford, L., University of Edinburgh, Centre for Educational Sociology

Released/Updated: 2007-11-30

Study number: 1287

[Strathclyde Area Studies, 1974](#)

Data creators: Strathclyde Area Survey

Released/Updated: 1981-01-01

Study number: 13

[Streaming Longitudinal Study: Teachers, 1966](#)

Data creators: National Foundation for Educational Research

Released/Updated: 1976-01-01

Study number: 8335

[Camfed Tanzania and Zimbabwe Girls' Educational Challenge Step Change Windsor Secondary School](#)

Go to data type to filter out longitudinal studies

Data access - Who can access the data?

All registered users!

However, which data can be accessed and the particular access conditions vary according to:

- user type
(UK HE/FE, Non HE/FE, Non UK)
- usage/project characteristics
(Commercial, non-commercial)
- specific data access conditions attached to chosen data
(EUL, SC, SL (AR), UKDS SecureLab data access, Safe Room data access).

Data access conditions	Access level
Open Licence	Open
End User Licence (EUL) [Authentication]	Safeguarded
Special Conditions (SC) [Authentication]	
Special Licence (SL) [Authentication, Accredited Researcher Status]	
SecureLab Data Access (remote) [Authentication, Accredited Researcher Status, Training + Test]	Controlled
SecureLab Data Safe Room Access (on-site) [Authentication, Accredited Researcher Status, Training + Test]	

Data access

- web access to data and metadata
- data are freely available for use in higher education institutions
- data supplied in a variety of formats
 - statistical package formats (e.g. SPSS, STATA)
 - databases and spreadsheets
 - word processed documents, PDF documents etc.

Accessing data – step by step

Register with us via UK Federation using your university/UKDA username and password




Agree to the End User Licence (EUL)



Select the desired data from the Data Catalogue by clicking on the 'Download/Order' button



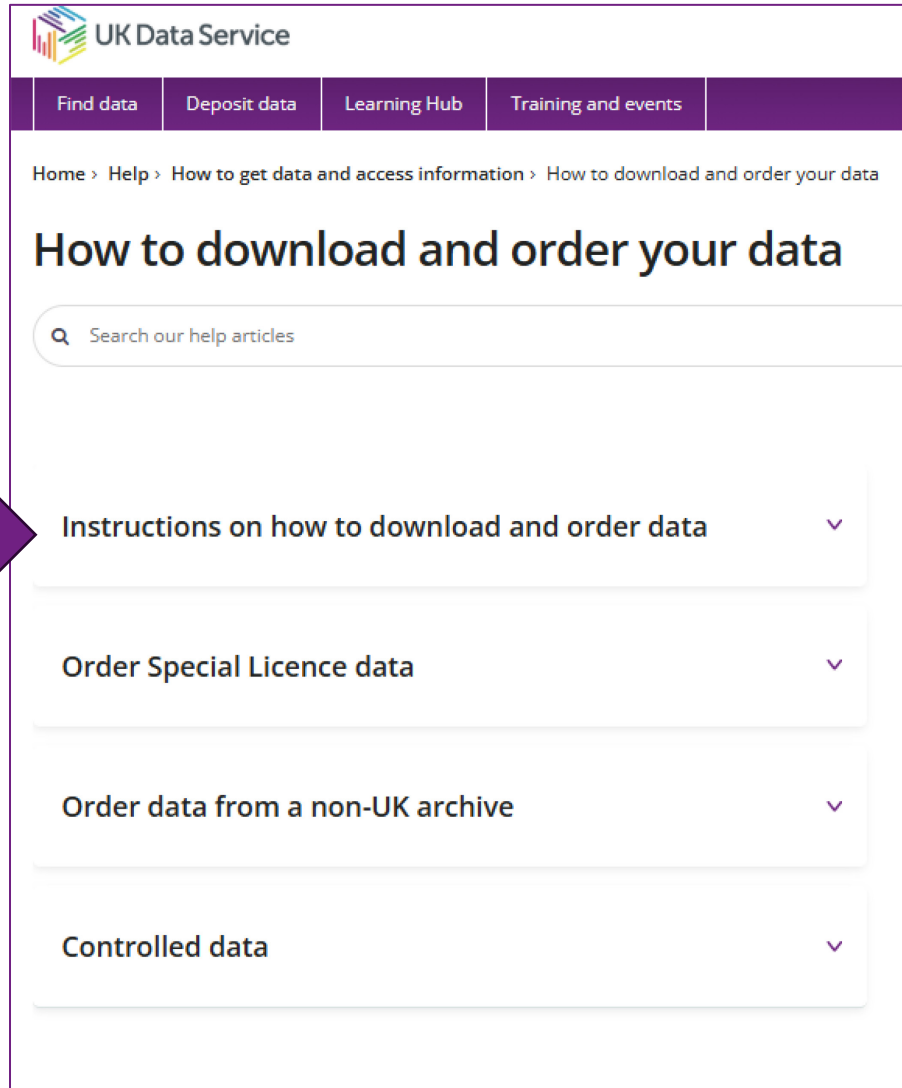
Specify a project for which the data is to be used (minimum: 30-word description)



Then:

- download the data to your local machine selecting your preferred format (SPSS, STATA, TAB etc.)
- or
- place an order for the data and complete all relevant forms

How to download and order data – online help



UK Data Service

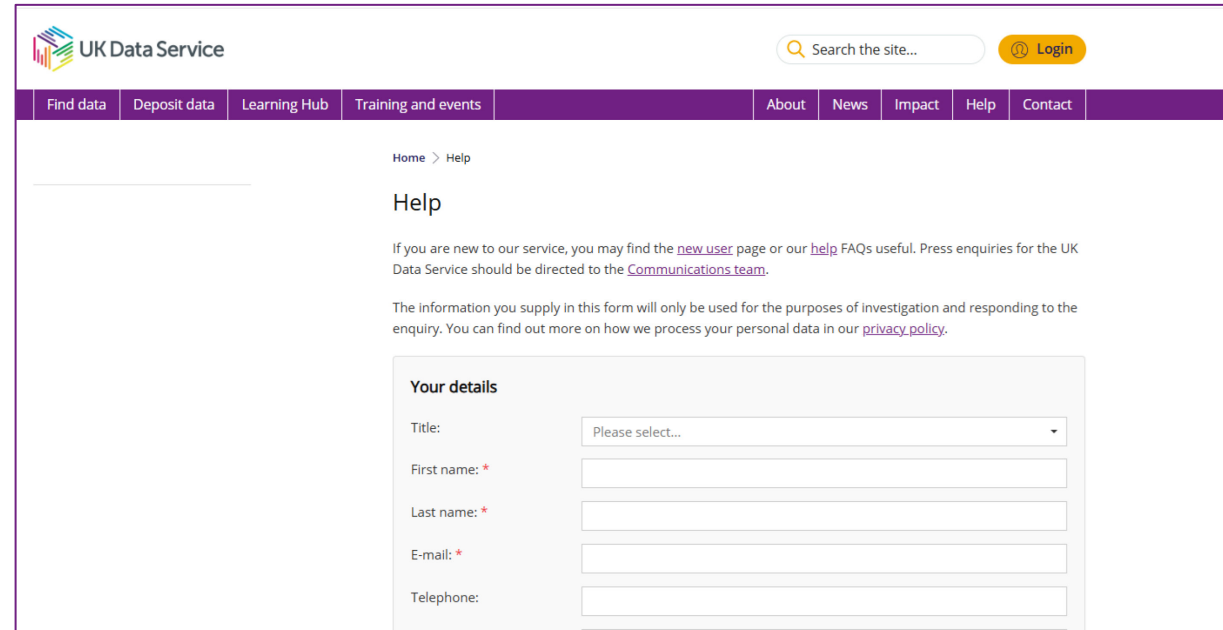
Find data Deposit data Learning Hub Training and events

Home > Help > How to get data and access information > How to download and order your data

How to download and order your data

Search our help articles

- Instructions on how to download and order data
- Order Special Licence data
- Order data from a non-UK archive
- Controlled data



UK Data Service

Search the site... Login

Find data Deposit data Learning Hub Training and events About News Impact Help Contact

Home > Help

Help

If you are new to our service, you may find the [new user](#) page or our [help](#) FAQs useful. Press enquiries for the UK Data Service should be directed to the [Communications team](#).

The information you supply in this form will only be used for the purposes of investigation and responding to the enquiry. You can find out more on how we process your personal data in our [privacy policy](#).

Your details

Title:

First name: *

Last name: *

E-mail: *

Telephone:

[UK Data Service > Help](#)

End User Licence

“Every user is required to agree to an End User Licence outlining the terms and conditions of use of the data. This includes, for example,

- not to share data with anyone who is not authorised to access them;
- not to use the data for commercial purposes, except with permission;
- not to try to use the data to identify individuals, households or organisations;
- to cite the data correctly and inform the UK Data Archive/UK Data Service of any publications;
- not to disclose your login details to anyone else;
- agreeing to meet any charges...”

SecureLab Data Access (Controlled Data)

- **UKDS SecureLab data are not downloadable, access remotely** from organisational desktop (or UKDA Safe Room or SafePod or IDAN member Safe Room)
- access requires accreditation as an Approved Researcher, completion of face-to-face training, and agreement to the Service's User Agreement and Breaches Penalties Policy
- applications are screened by the UK Data Archive and the individual or institution having ownership of the data (or their designated authority), and access is only granted to those researchers requiring data for statistical research purposes and who can justify their need for the data
- access via web-based interface that uses secure encrypted Citrix Virtual Private Network technology
- outputs subject to Statistical Disclosure Control (SDC).

Exploring data online (Nesstar)

Online Analysis using Nesstar

- online data browsing and analysis system
- allows users to search for, locate, browse and analyse and download a wide variety of statistical data within a web browser
- UK Data Archive, as service provider for the UK Data Service, hosts a Nesstar server populated by its most popular data series
- registration is required for analysis such as cross tabulations and regressions
- Software and tools - UK Data Service

-> [Nesstar WebView](#)

Nesstar

Nesstar enables you to search, browse, visualise, analyse and download a selected range of different kinds of social and economic data, from survey data to multidimensional tables.

Resources

- [Access Nesstar](#)
- Video tutorial: [Using Nesstar to download a subset of data](#)
- Video tutorial: [How to weight survey data in Nesstar](#)
- [GESIS Online Study Catalogue](#)
- [The European Social Survey \(ESS\)](#)
- More information on researching [survey data](#).

Nesstar – example (parenting skills, MCS)

DESCRIPTION

TABULATION

ANALYSIS

Dataset: Millennium Cohort Study: Fourth Survey, 2008

S4 MAIN Feels about parent... S4 MAIN Feels about parent... S4 MAIN Person Sex S4 MAIN Person Sex

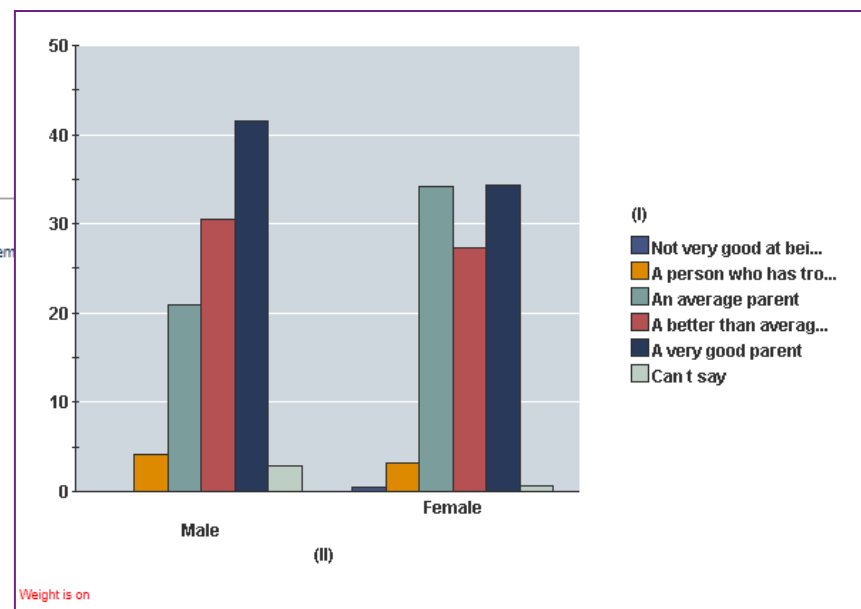
S4 MAIN Person Sex	Male	Female	Total
S4 MAIN Feels about parenting skills			
Not very good at being a parent	0.0	0.4	0.4
A person who has trouble being a parent	4.1	3.2	3.2
An average parent	20.9	34.1	33.7
A better than average parent	30.6	27.3	27.4
A very good parent	41.5	34.3	34.5
Can't say	2.9	0.6	0.7
Total	100.0	100.0	100.0
N=	363.8	12,933.8	13,297.6

Weight is on

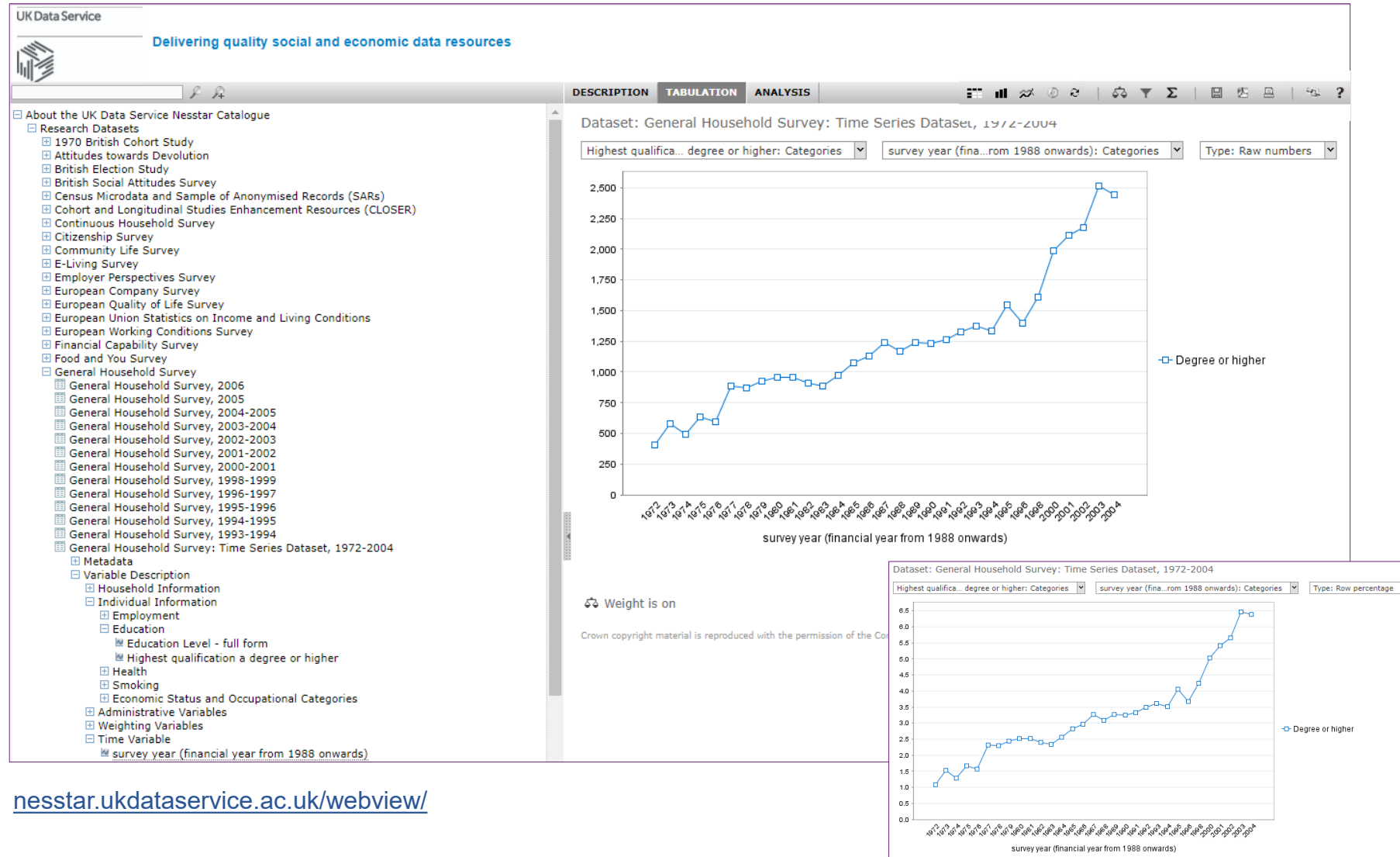
Copyright University of London. Centre for Longitudinal Studies

In general, frequencies and tables should be weighted before quoting percentages from them the data.

- S4 MAIN own parents
- S4 MAIN Whether respondents mother still alive
- S4 MAIN Age of respondent's mother
- S4 MAIN Age of resp mother at death
- S4 MAIN Is natural/adoptive father still alive
- S4 MAIN Age of respondent's father
- S4 MAIN age of father at death
- S4 MAIN Can I check, do your father and mother live together?
- S4 MAIN Time to travel to CM's (grand) parents
- S4 MAIN Journey time to resp mother's house
- S4 MAIN Journey time to resp father's house
- S4 MAIN Resp parents ever perm separate/ divorce
- S4 MAIN child's age when parents separated
- S4 MAIN Resp lived away from parents pre age 17
- S4 MAIN Residence away from parents pre 17 E/W/S
- S4 MAIN Is back coding still outstanding?
- S4 MAIN Residence away from parents pre 17 E/W/S (coded)
- S4 MAIN Residence away from parents pre 17 E/W/S (merged)
- S4 MAIN Residence away from parents pre 17 NI
- S4 MAIN Is back coding still outstanding?
- S4 MAIN Residence away from parents pre 17 NI (coded)
- S4 MAIN Residence away from parents pre 17 NI (merged)
- Partner
- Situations
- Module ES: Early Education, Schooling and Childcare
- Module AB: Child and Family Activities and Child's Behaviour
- Module CH: Child Health
- Module PH: Parent's Health
- Module EI: Employment, Income and Education
- Module HA: Housing and Local Area
- Module OM: Other Matters
- Module SC: Self-Completion
 - Child's Behaviour
 - Parenting
 - Self-Completion
 - Sibling Question
 - Parenting Attitudes
 - Other Children
 - Attitudes
- Module PX: Proxy Partner
 - Background/Ethnicity
 - Partner's Parents
 - Partner's Health
 - Partner's Employment
 - Partner's Education
- Administrative Variables
 - MCS Research Serial Number
 - S4 MAIN Code SA



Nesstar – example (highest qualification, GHS)



Demo Nesstar

Resources and help

Resources and help

- learning hub & data skills modules
- teaching data sets
- impact blogs and case studies
- help pages
- video tutorials and webinars
- user guides
- helpdesk for individual user support
- guidance and advice on managing and sharing data

Learning Hub

UK Data Service

Site search Login

Find data Deposit data Learning Hub Training and events About News Impact Help Contact

Home > Learning Hub

Learning Hub

Enhance your data skills and teaching

[New to using data](#)

Best practice and training for researchers new to accessing and using data in our collection. Includes advice and tools to correctly cite data; student-specific information on our Dissertation Award for undergraduates; and more.

[Data skills modules](#)

There is a wealth of data available for reuse in research and reports. These free, interactive tutorials are designed for anyone who wants to start using secondary data. They show you how to get started with finding good quality data, understanding it and starting your analyses.

[Students](#)

Students can access most of the UK Data Service's collection of social, economic and population data. Find resources to help you find and use our data during your studies including the UK Data Service dissertation resources.

[Survey data](#)

Survey data, including data from long-running surveys, series and longitudinal studies, are a major part of social science research. Learn how to use survey and longitudinal data through training resources including videos, on-demand webinars and written guides.

[International data](#)

Our international macrodata contain socio-economic time series data aggregated to a country or regional level for a range of countries over a substantial time period.

[Qualitative data](#)

Qualitative research gives a voice to the lived experience, offering researchers a deeper insight into a topic or individuals' experiences. Qualitative data can be combined with quantitative to enhance understanding around a policy or topic in a way that quantitative data by itself often cannot.

E.g.:

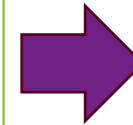
- Data skills modules
- Computational social science
- Teach with real data
- Software and tools
- Research data management
- Training events (online and in person)
- Data skills training webinars
- Training podcast and more

Longitudinal Data Skills Module

Introduction to longitudinal data

Longitudinal studies collect data about individuals, households, businesses or any other unit of observation over time so they can be used for following changes over the life course. Learn what longitudinal studies are available, key features and issues with using longitudinal data and how to start some basic analyses.

- Level: Introductory – but if you are new to surveys, we suggest you complete the surveys module first
- Time: approx. 2 hours (you can dip in and out of the materials and return as you like)
- Software: We use SPSS in the examples but you can do the examples in other statistical software. You can follow the module without having statistical software.
- Dataset: UK Household Longitudinal Study (Understanding Society) (End user licence version)
- Certificate of completion available: Yes



Content:

≡ Module introduction

UNIT 1: WHAT ARE LONGITUDINAL DATA?

≡ What are longitudinal data?

≡ Finding longitudinal data

≡ Check your understanding

UNIT 2: WHAT DO PEOPLE USE LONGITUDINAL DATA FOR?

≡ What do people use longitudinal data for?

≡ Use case 1: Does premature birth affect a child's long-term health or development?

≡ Use case 2: Using longitudinal data to explore the labour market

≡ Use case 3: Enjoying Life & Living Longer

≡ Use case 4: Parenting & contact before and after separation

[Data skills modules - UK Data Service](#)

Teach with real data

UK Data Service

Site search Login

Find data Deposit data Learning Hub Training and events About News Impact Help Contact

Home > Learning Hub > Teach with real data

Teach with real data

Search our learning hub

Accessing and sharing data for teaching

Teaching datasets

Teaching resources: qualitative data

Teaching resources: quantitative data

Teaching resources: data management

Schools

Using real research data

Use real research data to bring social science learning to life.

Most of our data collection can be used in teaching. We also have dedicated teaching datasets and resources to support teaching and learning.

This section gives information about accessing and sharing data for teaching, teaching datasets, and resources.

Looking for ways to bring more data into the classroom? For an overview, view our brochure on [Data-driven learning and teaching](#) (PDF).

Looking for what's available for students?

- Our [students resources pages](#) provide information and resources to help students access and manage data.
- We have [resources for dissertation students](#) with guides on how to manage research data (including templates for consent) and planning a dissertation project using survey data.
- Undergraduate students using data from the UK Data Service can also enter our [Dissertation Award](#).

Example: [Understanding Society: COVID-19 Study Teaching Dataset, 2020-2021](#)

Teaching datasets

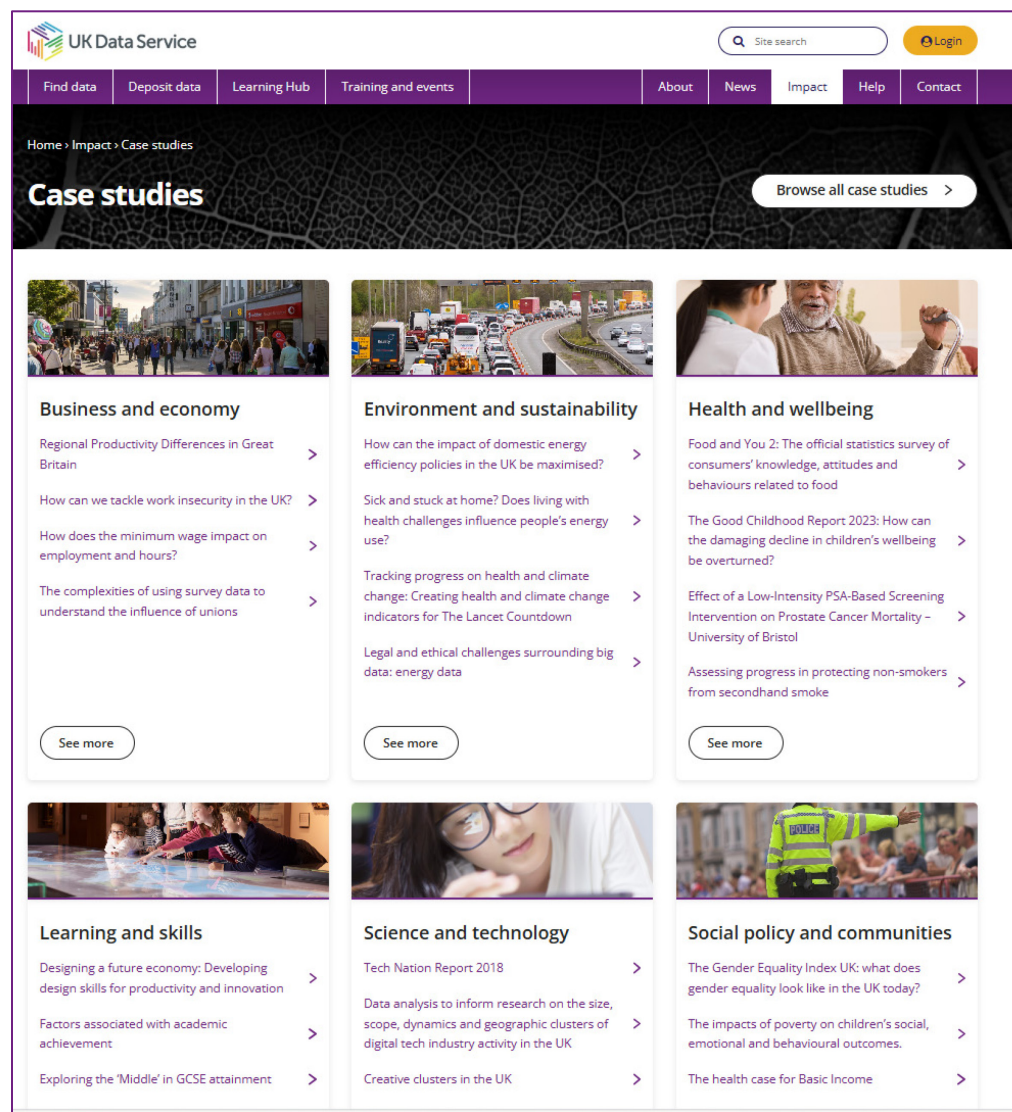
Our teaching datasets are based on real data but in a more accessible form for teaching and learning. This guide offers a quick overview of available datasets divided into categories of core, special topic, open access and census.

Do you want data...

- **that is user-friendly and reliable?** Our [core teaching datasets](#) are based on major UK social surveys. They are updated every few years with consistent content and formatting.
- **that is interesting or unique?** Our [special topic](#) teaching datasets include data from unique surveys on important topics such as ethnicity, experiences of the covid-19 pandemic, and sexual attitudes and lifestyles.
- **that is easy to download and share?** We have a growing collection of [open](#) access teaching datasets containing data from UK Surveys. These datasets can be downloaded without registration and shared with students.
- **from the UK Census?** We have teaching files containing samples of microdata from the UK [Census](#) going back to 1961.

[Teaching datasets](#)

Case studies



UK Data Service

Find data | Deposit data | Learning Hub | Training and events | About | News | Impact | Help | Contact

Home > Impact > Case studies

Case studies

[Browse all case studies >](#)

Business and economy

- [Regional Productivity Differences in Great Britain](#)
- [How can we tackle work insecurity in the UK?](#)
- [How does the minimum wage impact on employment and hours?](#)
- [The complexities of using survey data to understand the influence of unions](#)

[See more](#)

Environment and sustainability

- [How can the impact of domestic energy efficiency policies in the UK be maximised?](#)
- [Sick and stuck at home? Does living with health challenges influence people's energy use?](#)
- [Tracking progress on health and climate change: Creating health and climate change indicators for The Lancet Countdown](#)
- [Legal and ethical challenges surrounding big data: energy data](#)

[See more](#)

Health and wellbeing

- [Food and You 2: The official statistics survey of consumers' knowledge, attitudes and behaviours related to food](#)
- [The Good Childhood Report 2023: How can the damaging decline in children's wellbeing be overturned?](#)
- [Effect of a Low-Intensity PSA-Based Screening Intervention on Prostate Cancer Mortality - University of Bristol](#)
- [Assessing progress in protecting non-smokers from secondhand smoke](#)

[See more](#)

Learning and skills

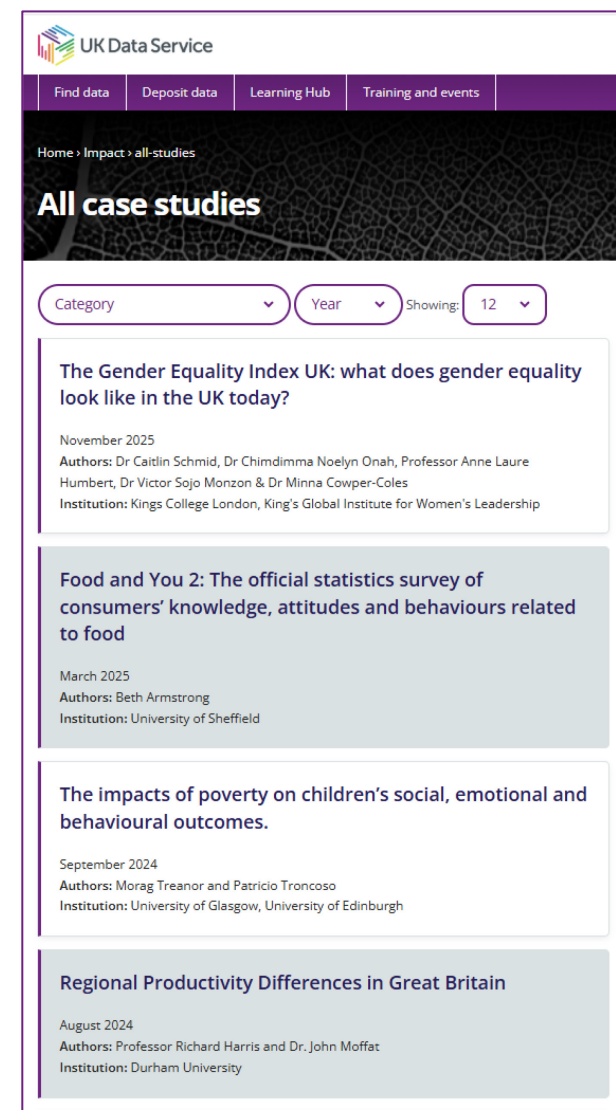
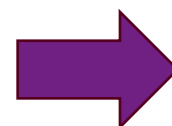
- [Designing a future economy: Developing design skills for productivity and innovation](#)
- [Factors associated with academic achievement](#)
- [Exploring the 'Middle' in GCSE attainment](#)

Science and technology

- [Tech Nation Report 2018](#)
- [Data analysis to inform research on the size, scope, dynamics and geographic clusters of digital tech industry activity in the UK](#)
- [Creative clusters in the UK](#)

Social policy and communities

- [The Gender Equality Index UK: what does gender equality look like in the UK today?](#)
- [The impacts of poverty on children's social, emotional and behavioural outcomes.](#)
- [The health case for Basic Income](#)



UK Data Service

Find data | Deposit data | Learning Hub | Training and events

Home > Impact > all-studies

All case studies

Category Year Showing: 12

The Gender Equality Index UK: what does gender equality look like in the UK today?

November 2025
Authors: Dr Caitlin Schmid, Dr Chindimma Noelyn Onah, Professor Anne Laure Humbert, Dr Victor Sojo Monzon & Dr Minna Cowper-Coles
Institution: Kings College London, King's Global Institute for Women's Leadership

Food and You 2: The official statistics survey of consumers' knowledge, attitudes and behaviours related to food

March 2025
Authors: Beth Armstrong
Institution: University of Sheffield

The impacts of poverty on children's social, emotional and behavioural outcomes.

September 2024
Authors: Morag Treanor and Patricio Troncoso
Institution: University of Glasgow, University of Edinburgh

Regional Productivity Differences in Great Britain

August 2024
Authors: Professor Richard Harris and Dr. John Moffat
Institution: Durham University

Help

Home > Help

Help

Search our help articles

- Registration
- Advice for new users
- How to get data and access information
- SecureLab
- Different types of data
- Exploring data online
- How to deposit data
- Searching for data
- General
- Homeworking
- Other data providers

Contact our helpdesk

If you are still unable to find the information you need in our website, please complete the short form to contact our helpdesk and user support services.

[Get in touch >](#)

UK Data Service

Site search Login

Home > Help > Different types of data > Longitudinal data and studies

Longitudinal data and studies

Search our help articles

Accessing longitudinal studies

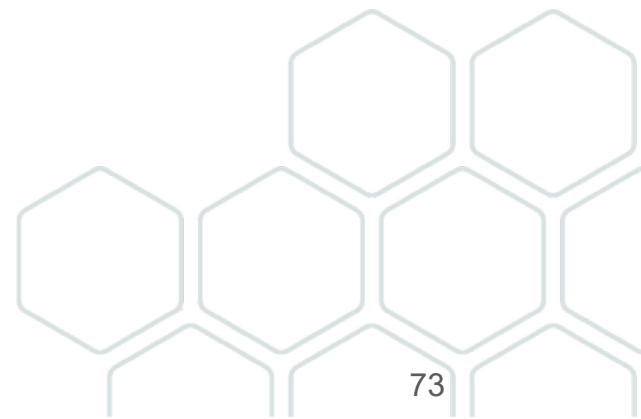
Longitudinal studies involve repeated observations of the same subjects, allowing researchers to analyse change at the individual level.

The UK is home to several key longitudinal studies, including major panel and internationally-renowned cohort studies including those listed below.

- 1970 British Cohort Study
- British Household Panel Survey
- CLOSER
- English Longitudinal Study of Ageing
- Growing Up in Scotland
- Millennium Cohort Study
- National Child Development Study

<https://ukdataservice.ac.uk/help/data-types/longitudinal-data-studies/>

Any questions before we move on to the hands-on practical?



Hands-on practical

A) Search Task

Use the data catalogue at <https://datacatalogue.ukdataservice.ac.uk/>

1. Type “longitudinal” into the Data Catalogue ‘Search data’ bar. What is the number of ‘Studies’ and ‘Series’ that come up as results?
2. Use the ‘Topic’ filter on the left-hand side to filter results by ‘Social and occupational mobility’. How many ‘Studies’ get returned in this search?
3. Of these, how many studies have the data access level ‘Controlled’ and cover the geographic location of ‘Great Britain’?
4. What is the first result on page 1 for this search? What is the study name and number?

A) Search Task - Answers

Use the data catalogue at <https://datacatalogue.ukdataservice.ac.uk/>

1. Type “longitudinal” into the Data Catalogue ‘Search data’ bar. What is the number of ‘Studies’ and ‘Series’ that come up as results? **1154 studies and 19 data series**
2. Use the ‘Topic’ filter on the left-hand side to filter results by ‘Social and occupational mobility’. How many ‘Studies’ get returned in this search? **58 studies**
3. Of these, how many studies have the data access level ‘Controlled’ and cover the geographic location of ‘Great Britain’? **6 studies**
4. What is the first result on page 1 for this search? What is the study name and number?
Study number: N 9115
1970 British Cohort Study: Sweeps 1-11 1970-2024: Secure Access

B) Data Citation Task

1. Find the data citation for SN 9115
'1970 British Cohort Study: Sweeps 1-11 1970-2024: Secure Access'

(This can be found under the details tab.)

B) Data Citation Task - Answer

1. Find the data citation for SN 9115
'1970 British Cohort Study: Sweeps 1-11 1970-2024: Secure Access'

(This can be found under the details tab.)

University of London, Institute of Education, Centre for Longitudinal Studies. (2025). *1970 British Cohort Study: Sweeps 1-11 1970-2024: Secure Access*. [data collection]. 3rd Edition. UK Data Service. SN: 9115, DOI: <http://doi.org/10.5255/UKDA-SN-9115-3>

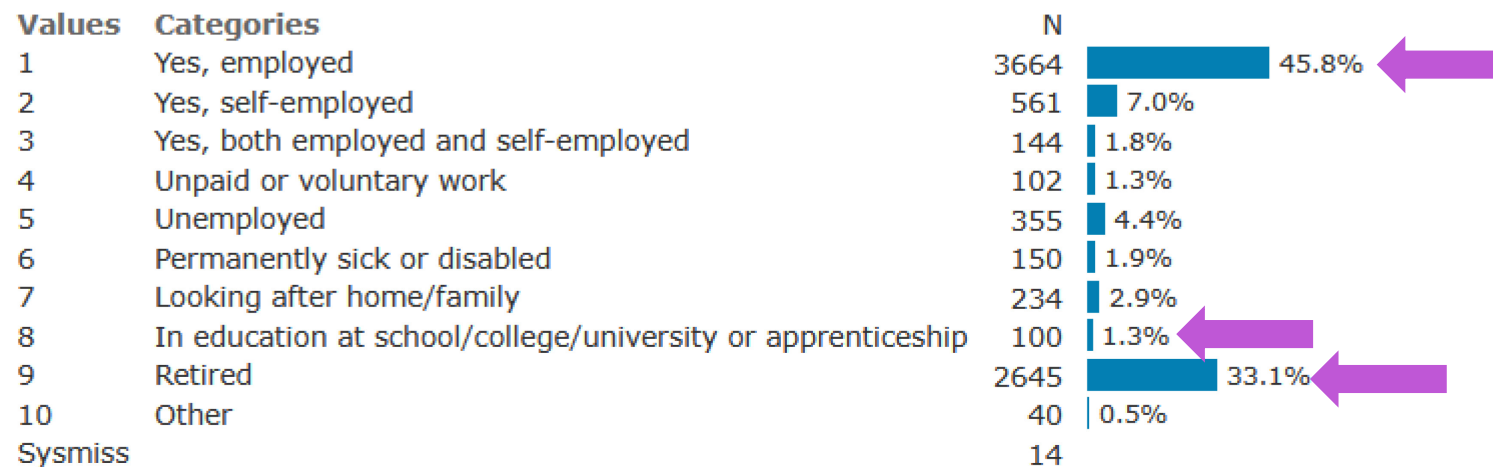
C) Online Analysis (Nesstar) Task

1. Login (or register with the UK Data Service, if you are not registered yet) @ <https://beta.ukdataservice.ac.uk/myaccount/login> or <https://beta.ukdataservice.ac.uk/myaccount/credentials>
2. Go to <http://nesstar.ukdataservice.ac.uk/webview/>
3. On the left-hand side, click on 'Teaching Datasets'. You will now see the list of teaching datasets available to explore online using Nesstar.
4. Select
 - 'Understanding Society',
 - dataset: Understanding Society: COVID-19 Study Teaching Dataset, 2020-2021
 - the variable 'Status of employment'
5. What percentage of respondents are **employed**, **in education**, and **retired**?

C) Online Analysis (Nesstar) Task - Answer

Dataset: Understanding Society: COVID-19 Study Teaching Dataset, 2020-2021

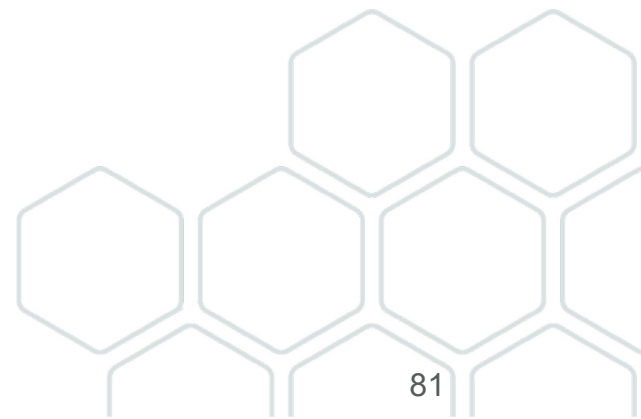
Variable **cd_empstat**: Status of employment



SUMMARY STATISTICS

Valid cases 7995
Missing cases 14
This variable is numeric

Any questions?



Contact

- Helpdesk:

[UK Data Service › Help](#)

- Subscription emails, LinkedIn, and YouTube:

[UK Data Service email updates](#)

[LinkedIn](#)

[YouTube](#)



Thank you.

support@ukdataservice.ac.uk