

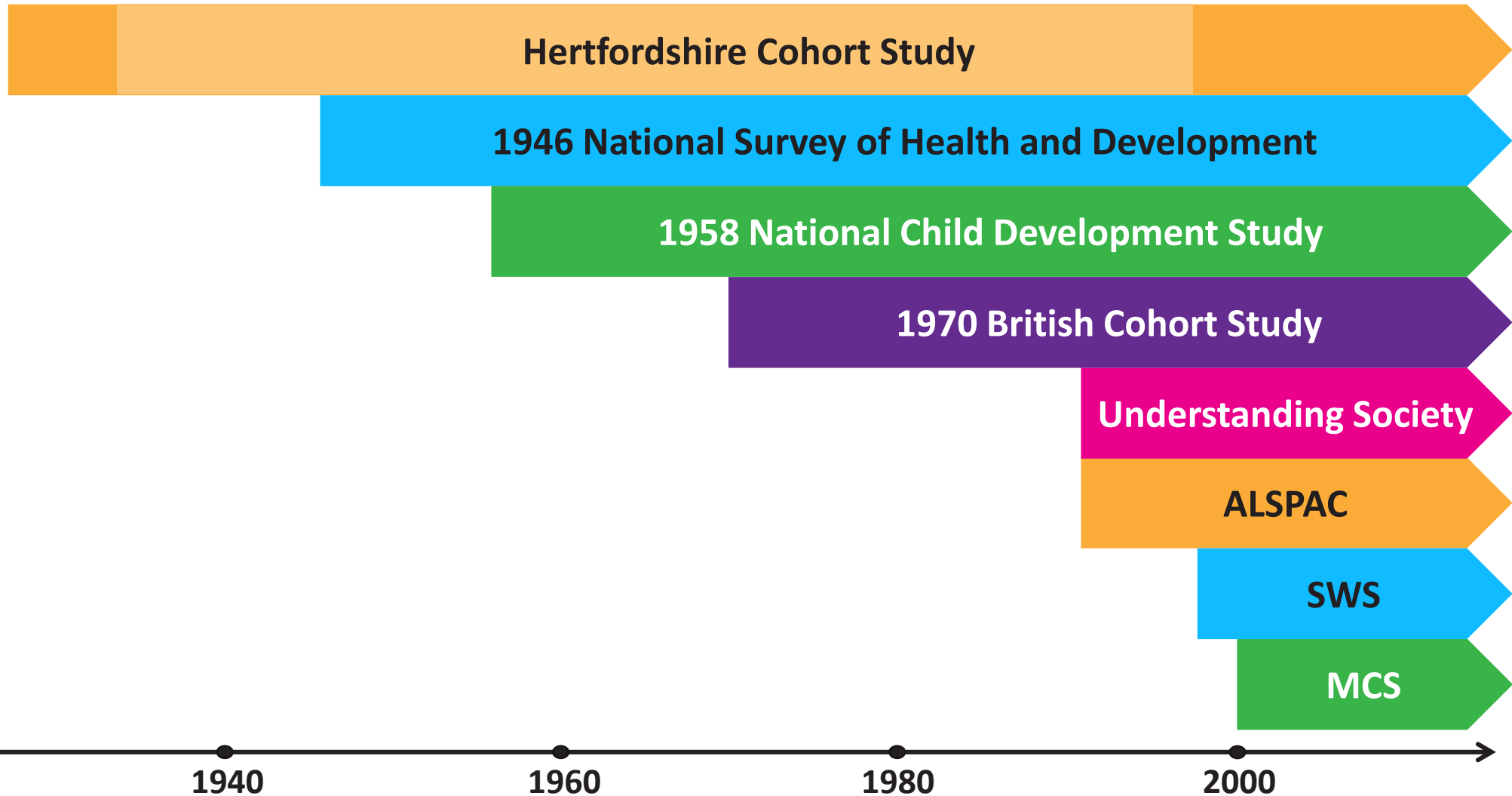
CLOSER: Our resources for investigating obesity in the UK

Professor Rebecca Hardy

MRC Unit for Lifelong Health and Ageing at UCL
& CLOSER, UCL Institute of Education



Partner studies





Question?

How many of you have used or heard of any of these studies?

Yes – used one of these studies

Yes – heard of one of these studies

No

Closer Discovery - <https://discovery.closer.ac.uk/>

About

Search

Explore

List 0

- Development Study (+45)
- Southampton Women's Survey (+29)
- Avon Longitudinal Study of Parents and Children (+248)
- CLOSER (+11)
- Understanding Society (-26)

Refine Reset

Life Stage ▾

- Pregnancy, birth and infancy (0)
- Early years (0)
- Childhood (0)

Help ▾

⌵



weight Sort by: Relevance ▾

Item types: All
Query: weight
Search within: Understanding Society
Search life stages: Pregnancy, birth and infancy; Early years; Childhood; Adolescence; Mid-adulthood; Third age; Other

Results 1 to 20 of 26 (0.047 seconds)

+ a_hlwtk

weight: kilos

What is your current weight without clothes? KILOGRAMS

Study: [Understanding Society](#) / Sweep: [Wave 1](#) / Data File: [Wave 1 CAPI Data Set 1 Dataset](#)

+ a_hlwts

weight: stones

What is your current weight without clothes? STONES

Study: [Understanding Society](#) / Sweep: [Wave 1](#) / Data File: [Wave 1 CAPI Data Set 1 Dataset](#)

+ a_hlwte

accuracy of weight

Are you fairly sure of your weight or is that an estimate?

Study: [Understanding Society](#) / Sweep: [Wave 1](#) / Data File: [Wave 1 CAPI Data Set 1 Dataset](#)

<https://www.understandingsociety.ac.uk/>



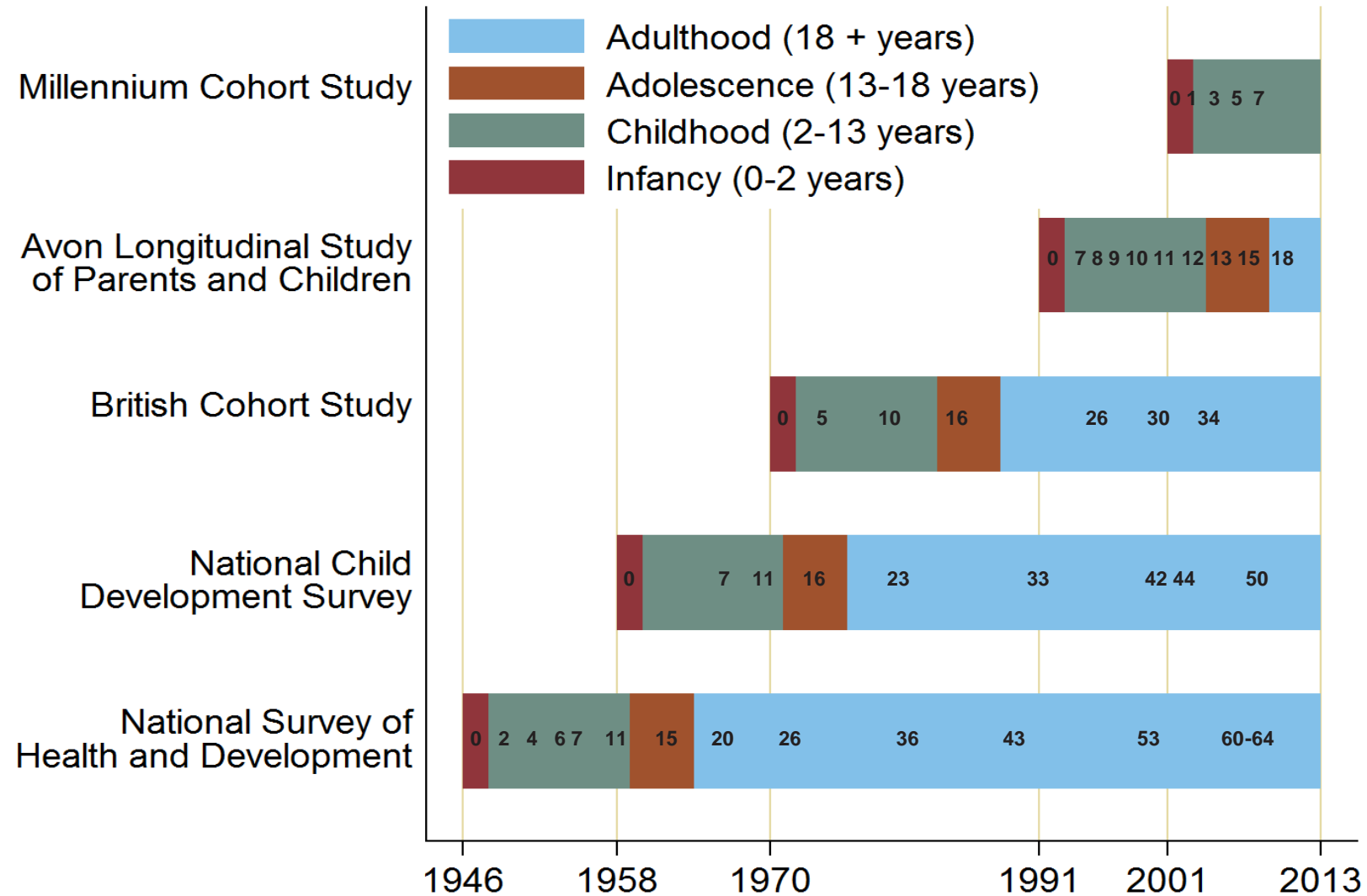
Cross-study body size data

Outputs from a CLOSER
harmonisation work package



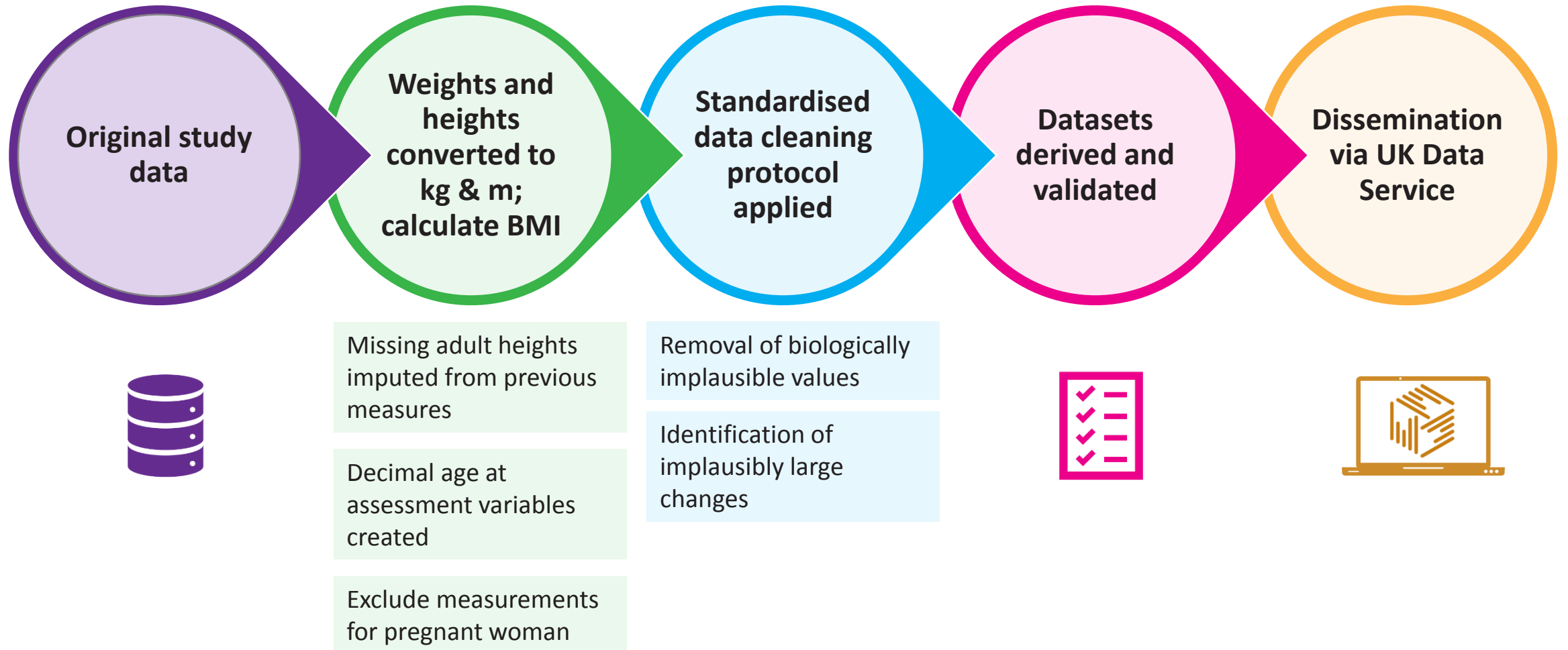


Body size data in 5 CLOSER studies





Harmonisation process





Using the CLOSER harmonised body size data

- Harmonised dataset available via the UKDS website
 - Available under 2 licencing types

End User Licence (UKDS registration required)
<ul style="list-style-type: none">• NCDS• BCS70• MCS

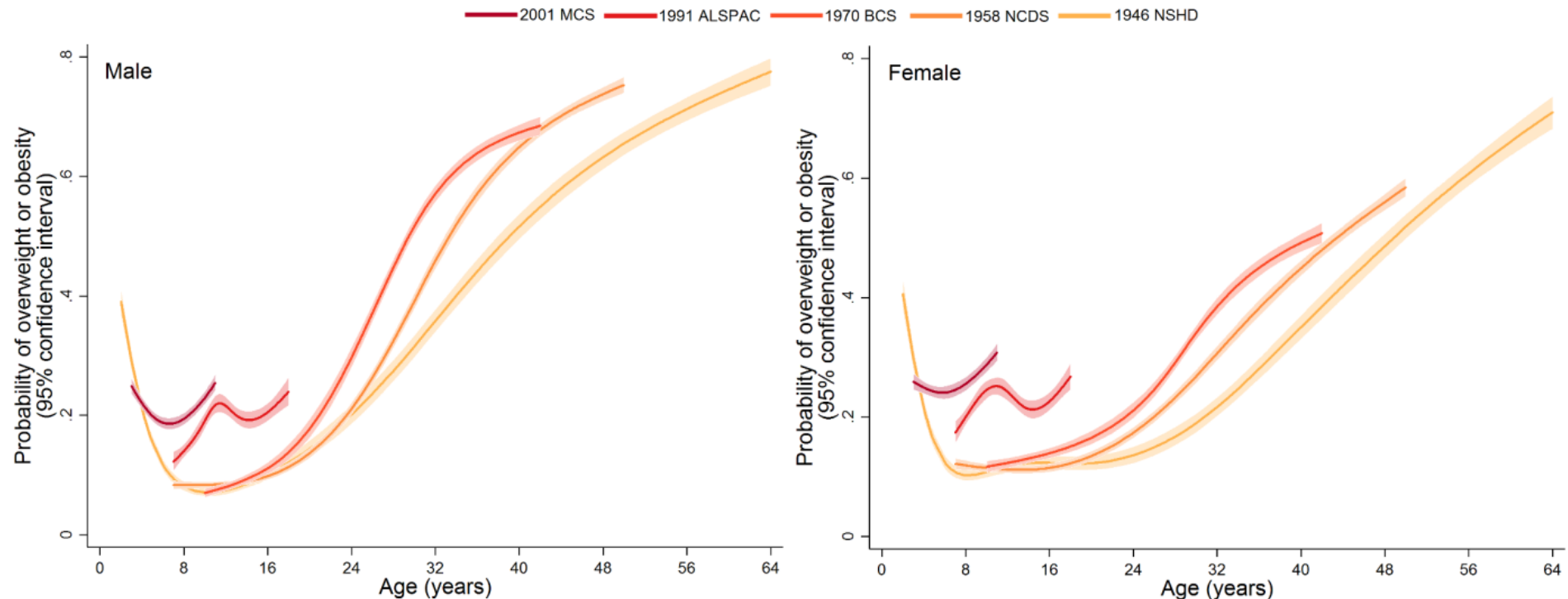
Special Licence (UKDS registration & research application required)
<ul style="list-style-type: none">• NSHD• ALSPAC

- The data can be linked to the original study data or to other CLOSER harmonised datasets



Cross-cohort comparison

Trajectories of the probability of overweight or obesity (versus normal weight) by cohort

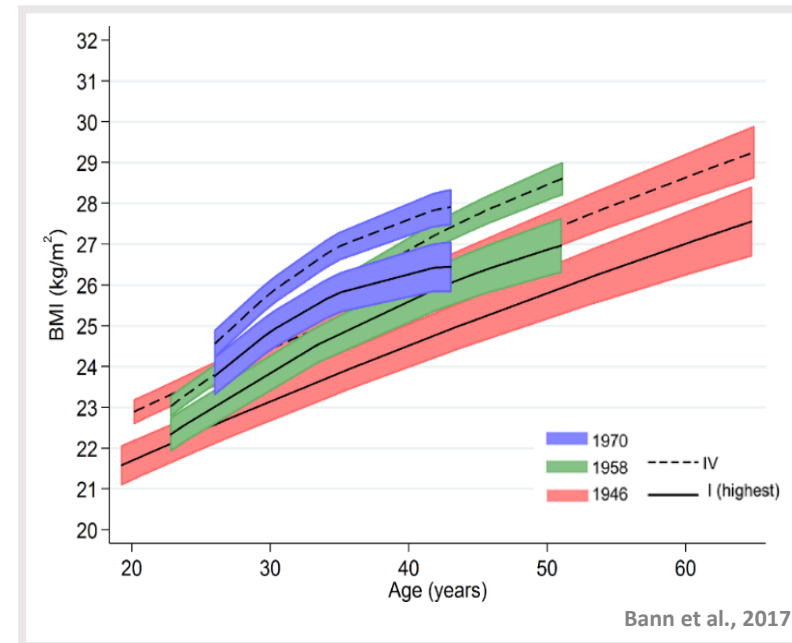
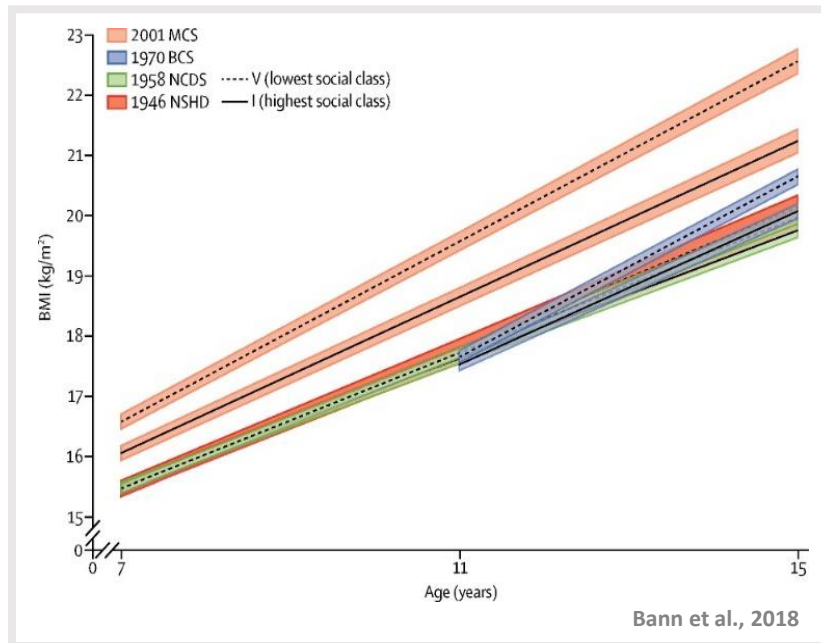




An example of cross-work package analysis:

Social inequalities BMI

- Social inequality in BMI from age 7y in 2001 cohort, but little or no social inequality in childhood BMI in 1946, 1958 and 1970 cohorts
- Inequality in adulthood BMI according to childhood social class in 1946, 1958 and 1970 cohorts





Funders

CLOSER has been funded by the Economic and Social Research Council and Medical Research Council. Additional funding has been received from the UKRI's Global Challenges Research Fund.



Consortium partners



UK Data Service

