
Getting started with reusing data

Vanessa Higgins and Maureen Haaker
UK Data Service



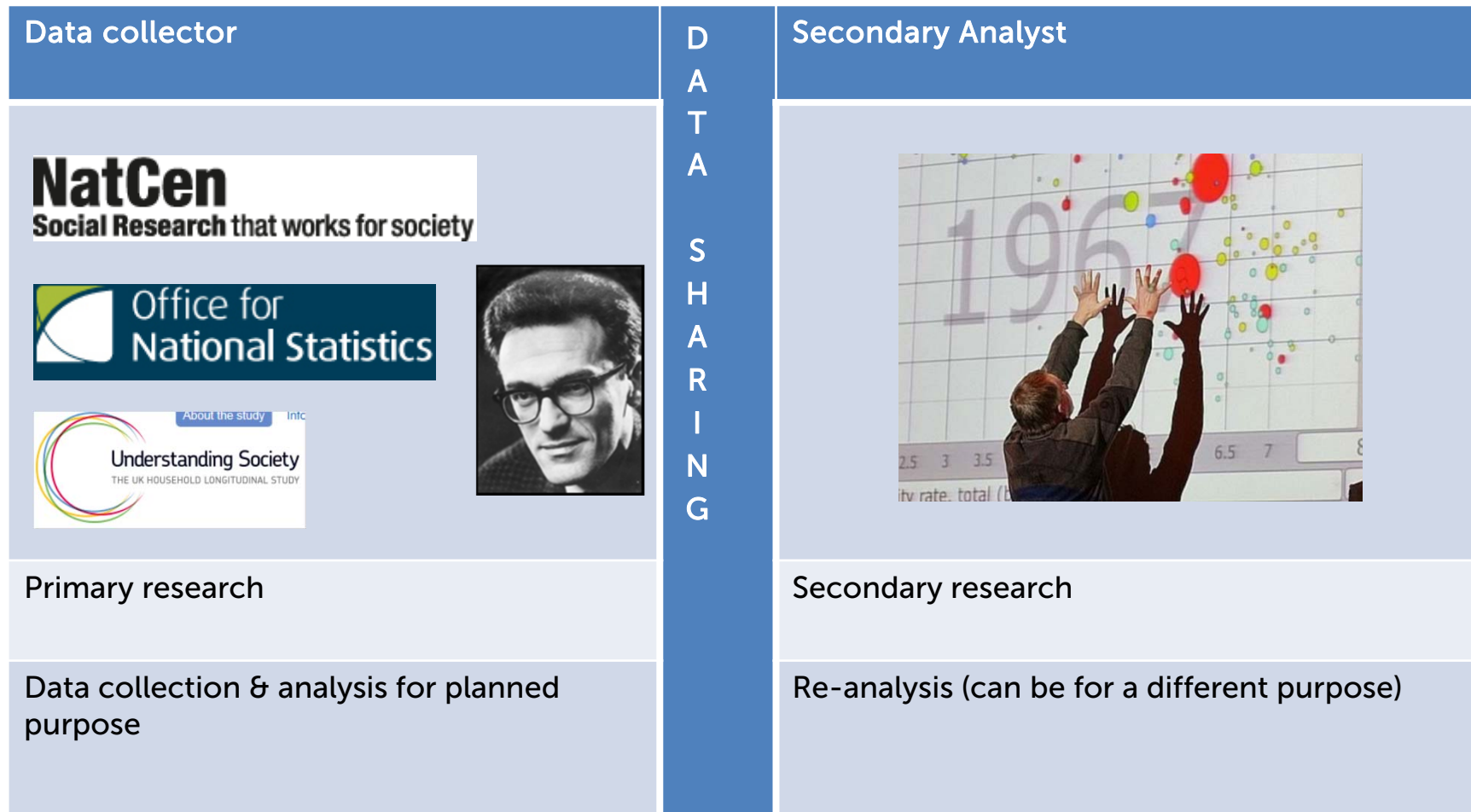
Overview

- Data are available for reuse
- Issues with reusing data
- Quantitative
 - Case study
 - What's available
 - Key issues
- Qualitative
 - Case study
 - What's available
 - Key issues
- Talk for ~35 min
- Questions



type questions as
they occur to you

Reusing data



Pros and cons of reusing data

Pros

datasets impossible to create

cost effective

ethical issues about data collection dealt with

do not need to re-contact data subjects

reuse data used by others to make claims

Cons

do not have insider understanding of data and data collection

effort to get to know the data

ethical issues about data use still apply (limit access to sensitive data)

data may not match research question

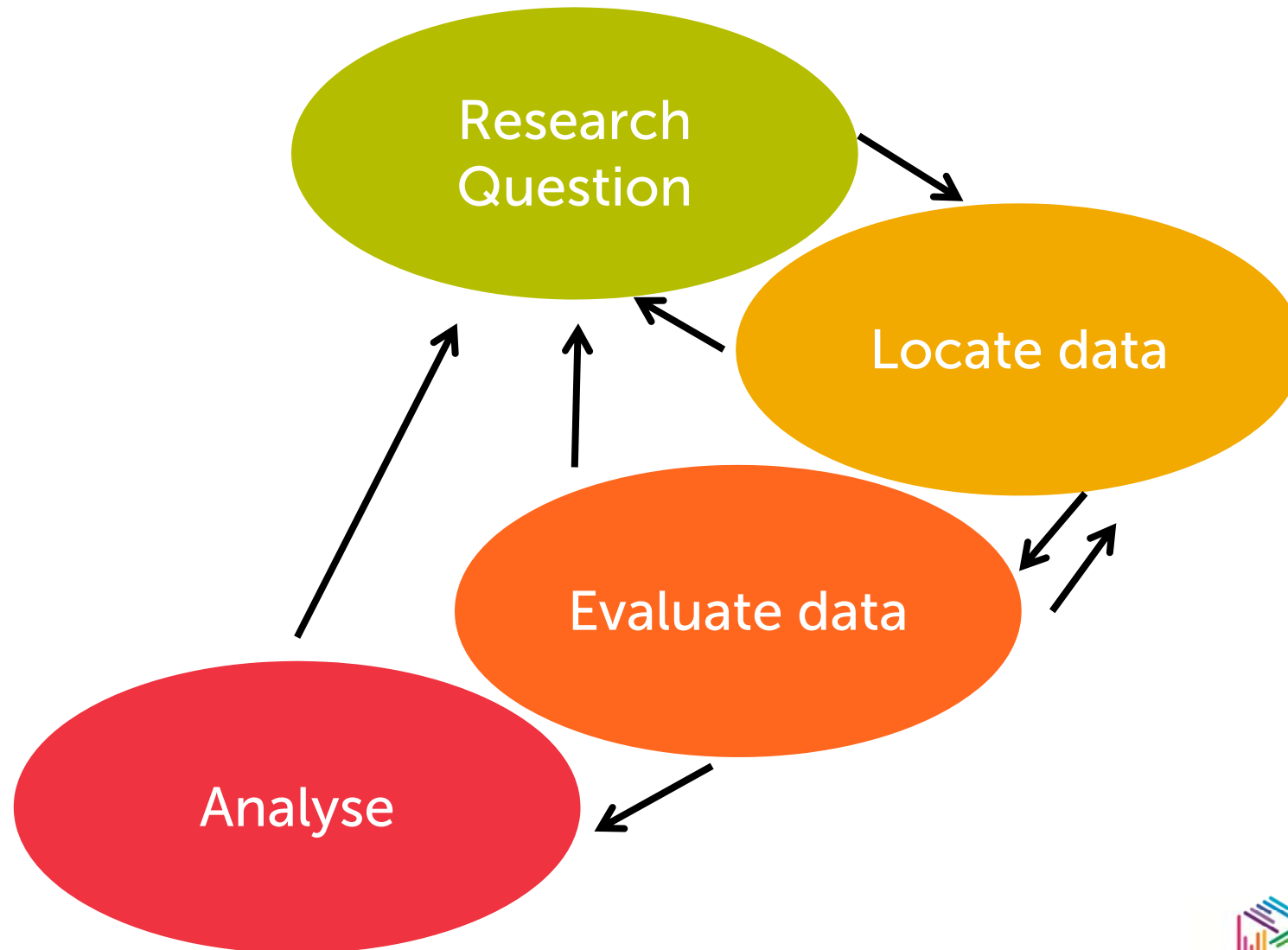
cannot extend studies



Researchers reusing data need to:

1. make effort to understand the data
2. be pragmatic about whether data are good enough for your purpose

Research plan



Making sense of your data

To understand data and it's suitability for your research you must understand...

- what information was collected
- from whom
- when and where
- any changes to the raw data before being archived

Use documentation

- user guides
- questionnaires
- interview schedules

Quantitative data

- Case study
- What data is available?
- What sorts of documentation are available?
- Key issues



Case Study: Crime Survey for England and Wales (formerly the British Crime Survey)

- Example of a repeated cross-sectional survey
- Important source of information about crime
(Crime statistics independent from police records)
- Annual survey (interviews throughout the year)
- $n \approx 35,000$ individuals aged 16+ and 3,000 aged 10-15
- Victim of a crime in the previous 12 months
- Questions covering demographics and crime-related subjects such as attitudes to the police and the criminal justice system (CJS)



Case Study: Crime Survey for England and Wales

Data stored as individual anonymous records

	split	nadults	sex	age	nchil	yrsarea	mthsaddr	resyrago	genhealt	work2	govtsch2	ow
1	A (Attitudes t...	1	Female	27	1	2 years but less than 3 years	.	.	Fair	No	No	.
2	B (Attitudes t...	2	Female	30	0	Less than 12 months	9	No	Very good	Yes	.	.
3	D (Ad hoc cri...	2	Female	91	0	20 years or longer	.	.	Very good	No	No	.
4	A (Attitudes t...	1	Male	83	0	5 years but less than 10 ye...	.	.	Fair	No	No	.
5	C (Crime pre...	2	Male	26	0	2 years but less than 3 years	.	.	Very good	Yes	.	.
6	B (Attitudes t...	2	Female	38	2	5 years but less than 10 ye...	.	.	Very good	Yes	.	.
7	C (Crime pre...	2	Female	30	2	Less than 12 months	8	No	Good	Yes	.	.
8	D (Ad hoc cri...	1	Female	89	0	20 years or longer	.	.	Fair	No	No	.
9	A (Attitudes t...	1	Female	35	2	20 years or longer	.	.	Very good	Yes	.	.
10	B (Attitudes t...	2	Male	40	1	12 months but less than 2 y...	18	Yes	Fair	No	No	.
11	C (Crime pre...	4	Female	41	3	10 years but less than 20 y...	.	.	Good	No	No	.
12	D (Ad hoc cri...	1	Female	56	0	5 years but less than 10 ye...	.	.	Very good	No	No	.
13	A (Attitudes t...	1	Female	73	0	3 years but less than 5 years	.	.	Bad	No	No	.
14	B (Attitudes t...	2	Female	67	0	2 years but less than 3 years	.	.	Good	No	No	.

- Different levels of access

- A standard End User Licence (download after registering)
- Secure Access (for sensitive information)

Case Study: Re-use of crime Survey for England and Wales

- Hind Khalifeh et al (2013) examined violence against people with disability in E&W

British Crime Survey 2009/10
introduction of disability measures
(a special licence version of the data)
n = 46,398 adults 16+
9,037 had at least one limiting
disability

Findings :

Adjusting for age, sex, socio-economic characteristics...

- disability increases risk of experiencing violence
- levels of victimisation highest amongst those with mental health problems
- estimated 116,000 victims of violence attributable to disability



<http://www.plosone.org/article/info:doi/10.1371/journal.pone.0055952>

Quantitative data by type of analysis

Type of analysis	Type of data
Individuals, families, households, businesses : one point in time	Cross-sectional surveys (e.g. Time Use Survey) and census microdata
Individuals, families, households, businesses : multiple points in time	Repeated cross-sections (e.g. different years of Crime Survey for England and Wales, Labour Force Survey)
Individuals, families, households: over time	Longitudinal data (e.g. Understanding Society)
Small geographic areas	Census aggregate data, flow data
Comparing countries (over time)	International time series (e.g. World Bank Indicators)

Where, when and why?

- Start with catalogue record

Date & Geographic coverage is in the catalogue record for most studies

[Home](#) / [Data catalogue](#) / [Studies](#) / Study

British Social Attitudes Survey, 2013

[Details](#) [Documentation](#) [Resources](#) [Access](#)

Details

Title:	British Social Attitudes Survey, 2013
Alternative title:	BSA
Study number (SN):	7500
Persistent identifier (DOI):	10.5255/UKDA-SN-7500-1
Series:	British Social Attitudes Survey
Principal investigator(s):	NatCen Social Research

Sponsors and contributors

Coverage and methodology

Dates of fieldwork:	June 2013 - November 2013
Country:	Great Britain
Spatial units:	Government Office Regions Countries
Observation units:	Individuals
Observation unit location:	National
Population:	Adults (18 and over) living in private households in Great Britain (excluding the 'crofting counties' north of the Caledonian Canal).
Number of units:	3,244 cases
Method of data collection:	Face-to-face interview Self-completion The interview is conducted by Computer-Assisted Personal Interviewing (CAPI).
Time dimensions:	Repeated cross-sectional study The BSA survey is conducted annually.
Sampling procedures:	Multi-stage stratified random sample See documentation for each BSA year for full details.
Kind of data:	Numeric data Individual (micro) level
Weighting:	Weighting used. See documentation for details

Access to
documentation
including user guide
or technical report

Who was asked what...

FLEX10

Some people have special working hours arrangements that vary daily or weekly.
In your (main) job is your agreed working arrangement any of the following...

Code up to 3

- 1 flexitime (flexible working hours),
- 2 an annualised hours contract,
- 3 term-time working,
- 4 job sharing,
- 5 a nine-day fortnight,
- 6 a four-and-a-half day week,
- 7 zero hours contract,
- 8 on-call working, or
- 9 none of these?

ONS ✓

GOV ✓

SPL ✓

EUL ✓

Applies if in work during reference week

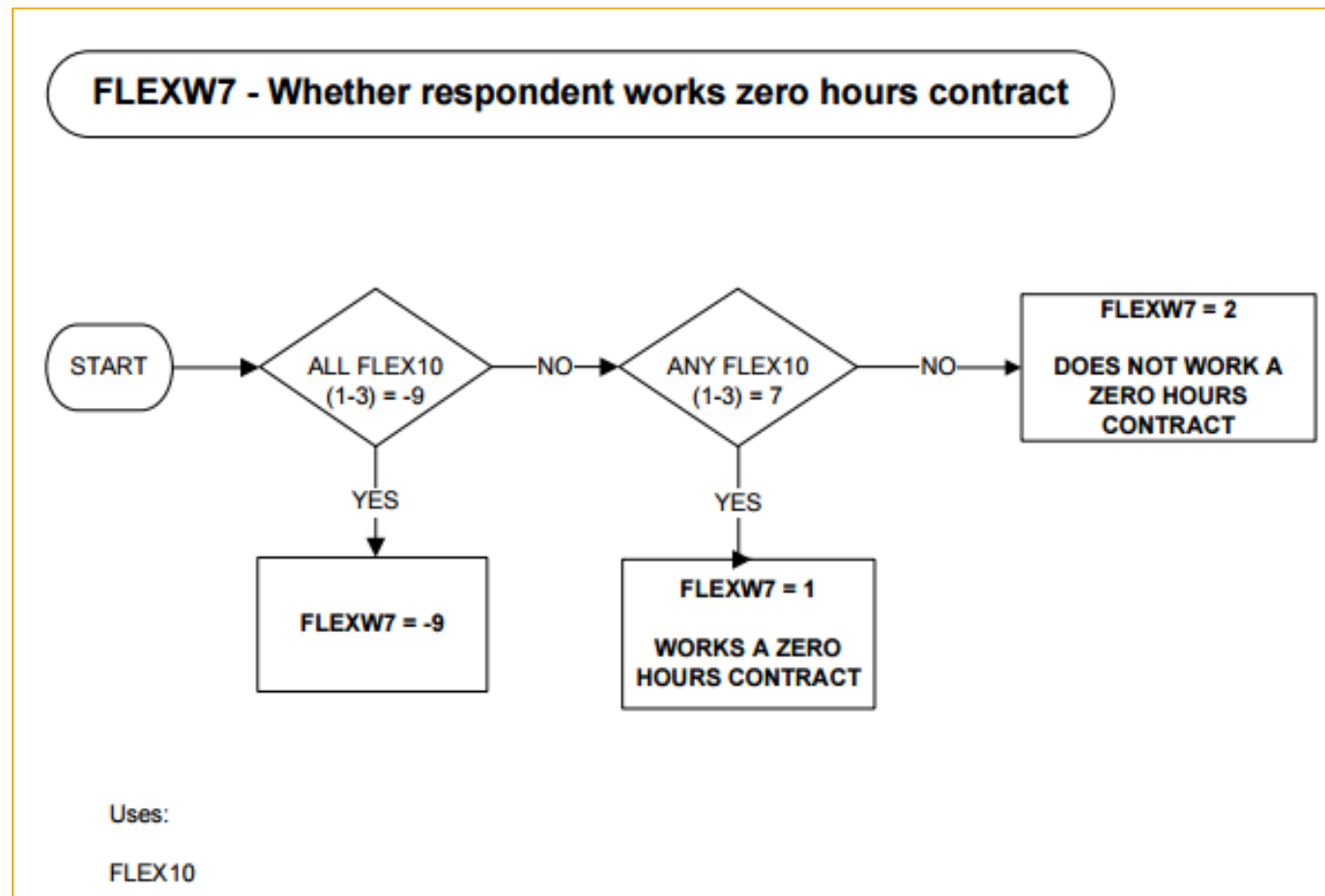
IF (Wrking=Yes) OR (JbAway=Yes) OR (OwnBus=Yes) OR (RelBus=Yes)
OR (TYPSC12=1,2,3,5,8) On a government training scheme considered as employment
OR ((TYPSC12=9) AND (YTETJB=Yes)) OR (YTETJB=Yes) Doing paid work in addition to this particular government training scheme

**UK
W1/EQ
MAIN
AW/AJ and OD
RUNNING PROMPT**

Computer Aided Interviewing (CAI) makes it easy to send respondents through the questionnaire by different routes
Many questions may only be applicable to some of the sample

And what was done with data afterwards?

- derived variables are created from the 'raw' data



Sampling considerations

- surveys are based on samples
- is the sample representative?
 - who is included (adults, those in private address)?
 - response rate and bias
 - do you need to apply a weight to make the data representative?
- do I have enough cases to make a precise estimate?
 - Important for small sub-populations

For more information, see UK Data Service guides to Survey weights and Complex sampling

References and resources

General discussions:

- Dale, A., Wathan, J. and Higgins, V. (2008) 'Secondary Analysis of Quantitative Data Sources' in **The Sage Handbook of Social Research Methods** eds: P. Alasuutari, L. Bickman and J. Brannen Sage:London
- Smith, E. (2006) **Using Secondary Data in Educational and Social Research** OUP: Berks

Data Service resources:

- **Data Skills Modules**
<https://www.ukdataservice.ac.uk/use-data/data-skills-modules>
- **Secondary analysis web pages:**
<https://www.ukdataservice.ac.uk/use-data/secondary-analysis>
- **Using Survey Data:**
<https://www.ukdataservice.ac.uk/media/455510/using-survey-data.pdf>
- **What is weighting? :**
<http://ukdataservice.ac.uk/media/285227/weighting.pdf>
- **What is complex sample design?**
<http://ukdataservice.ac.uk/media/398743/complexsampleguide.pdf>

Reusing qualitative data

- Types of qualitative data reuse
- Case study of reusing UK Data Service data: School Leavers Study
- Getting started with reusing qualitative data
 - Key issue: documentation and sampling
 - Key issue: searching
- Finding data – browse, search, QualiBank

Many ways of re-using data

- Description
 - Literature review with data
 - See more data, not limited to published extracts
- Research design and methodological advancement
 - Study sampling, data collection methods, topics guides
 - Compare original interview schedule questions actually asked in the interview
- Reanalysis – asking a research question very different to the original research
 - Very different – comparative keyword analysis of illness narratives Seale and Charteris-Black (2008)
 - “Similar” topics, but with different focus (Bornat et al. 2012)
- Learning and Teaching (Haynes and Jones 2012)

SN 4867: **School Leavers Study**

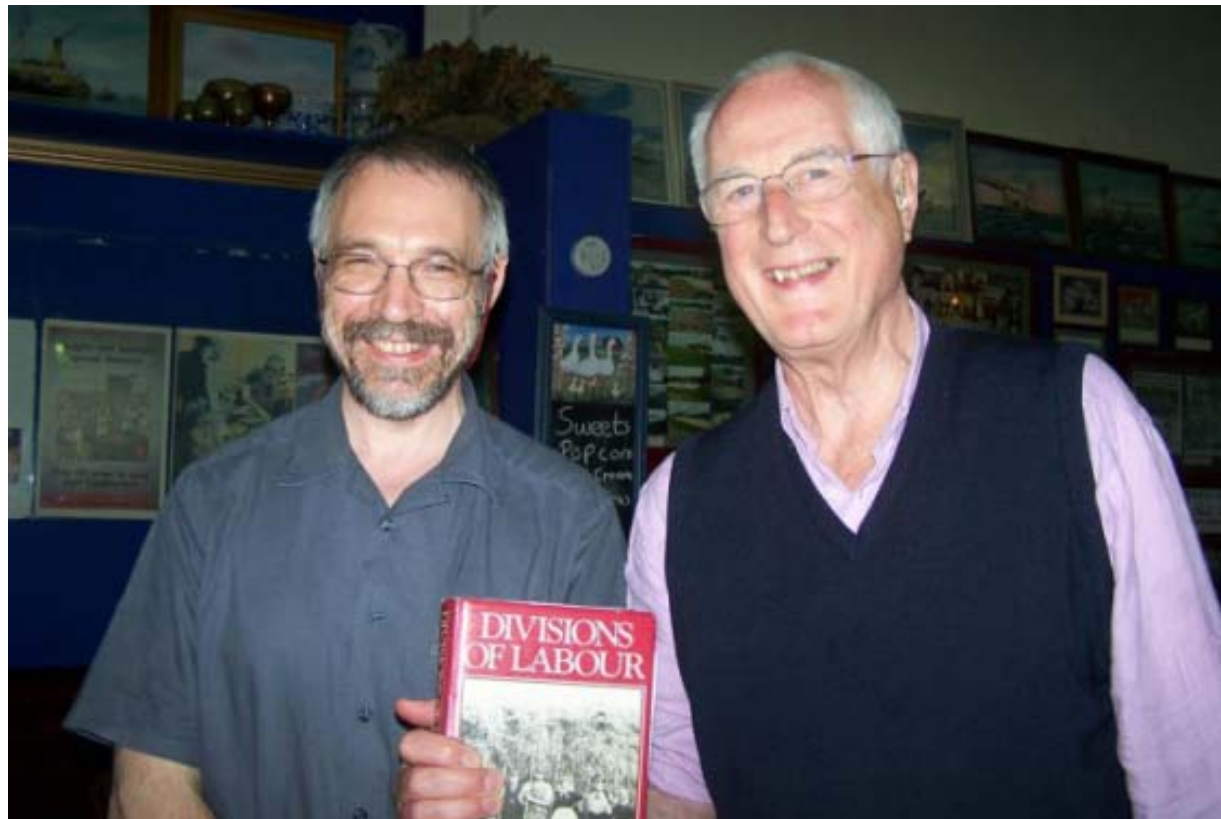
Principal investigator: Ray Pahl

In 1978, teachers at a comprehensive school on the Isle of Sheppey were asked to set an essay about 10 days before pupils were due to leave school. The essay asked students to imagine that they were nearing the end of their life, and that something had made them think back to the time when they left school. They were then asked to write an imaginary account of their life over the next 30 or 40 years.



School Leavers Re-Study: Imagining the Future

Re-users: Graham Crow and Dawn Lyon



School Leavers Re-Study

Essay instructions 2010: Imagining the Future:

I want you to imagine that you are towards the end of your life. Look back over your life and say what happened to you. Don't write a very exaggerated story, just tell the straightforward story of your life as it might really be. Of course you cannot know what is going to happen to you, but you can describe the sort of thing that could happen if things go as you expect or hope. Spread your story over your whole life from the time of leaving school. Continue on another sheet as necessary.

Sheppey: Essay 30
Group: Boys

My Past

I was sitting in front of the fire smoking my pipe, just thinking of the past. I was nearly seventeen when I left school, I had an apprenticeship in the Tudor Glass, an electrical apprenticeship lasting four years, I served my four years and got my diploma for an electrical engineer. I was now twenty and courting a really lovely girl. I had to work in London in my next job and came back home every weekend. Jobs were scarce so you had to take what you can get, I didn't want to go to London,

UK Data Service

Living and Working on Sheppey

1978: 141 essays (89 boys and 52 girls)

‘Living without a job: how school leavers see the future’ published in *New Society* in 1978 (2 November, pp. 259-62).

2009-10: The exercise was repeated by the Living and Working on Sheppey project and 110 essays (55 boys and 55 girls) were gathered from school pupils and members of youth groups on the Isle of Sheppey to compare to the earlier ones.


Together, these two sets of essays shed light on the aspirations of Sheppey’s young people (and young people more generally) and cover a range of topics including

- Health
- Education
- Career
- Family and leisure

1978	2010
Mundane & grounded jobs; gradual career progression; periods of unemployment.	Well-paid, instantaneous jobs; choice but uncertainty; influence of celebrity culture.
"It was hard finding a job, I failed a few chances, but eventually got what I wanted locally, a craft apprenticeship." (Essay 27, male)	"I could not decide what to do. Then it came across my mind that I should be a body builder, and be good enough to enter the Mr Olympia contest. After that I went to an athletics club, within a few months I was scouted for the Olympics for the 200 metre sprint." (Essay 10, male)
"I was on the dole for six months after leaving school, until I got a job in a garage." (Essay 42, male)	"I was 20 now living the dream I had a amazing band...I had toured the world 3 times sold 4 million records." (Essay 30, male)
"When we found a house it was a semi-detached in Sittingbourne. I wanted to live in Italy but that was asking for too much." (Essay 56, male)	"I arrive at my 3-bedroom luxury villa; I land my helicopter on my own heli-pad and walk inside. I grab my keys and jump in my Bentley Continental GTS." (Essay 40, male)
"I longed for something exciting and challenging. But yet again I had to settle for second best. I began working in a large clothes factory." (Essay 104, female)	"In my future I want to become either: a dance teacher, hairdresser, or a Professional Show Jumper/horse rider. If I do become a dancer my dream would be to dance for Beyoncé or someone really famous." (Essay 61, female)

Living and Working on Sheppey

Living and Working on Sheppey



Welcome to the Living and Working on Sheppey: Past, Present and Future project website.

Living and Working on Sheppey explores the recent history and changes in working lives on Sheppey in the last decades of the 20th century and into the 21st. It concentrates on the period since the closure of the dockyard at Sheerness in 1960.

The site contains **materials from older people and their memories of work** in or around the dockyard and everyday life in Blue Town, the area of Sheerness closed to the dockyard. You can listen to clips of these interviews on different themes including the closure of the Dockyard, various trades, and changes in family life across different generations, and you can read the interviews in full (you need to register to do that).

You can read and listen to **short essays written by young people** in 2009-10 on what they imagine their futures have in store for them. They talk about their hopes and aspirations for their working lives, families, and travel as well as some of the difficulties they foresee.

You can watch the **two videos made by the artists, Tea**, as part of the Living and Working on Sheppey project. In 'Back and Forth on High Street Blue Town' you can see images of Blue Town High Street past, present – and future! And you can hear older people's memories of everyday life on the High Street through the twentieth century. In 'Sheerness Port', you can go on a journey around the site of the former Dockyard today.

The Living and Working on Sheppey project was funded by the South East Coastal Communities Programme from 2009 to 2011. See Peter Hatton and Jenny Hurkett and discuss the project, the Blue Town Heritage Centre and the Isle of Sheppey in the video clip below.

- Home
- Project overview
- Project team
- The Isle of Sheppey: context
- The Isle of Sheppey: gallery
- Older people's memories
- Young people and the future
- Blue Town High Street: a video by Tea
- Sheerness Port: a video by Tea
- Lessons learned
- Get involved
- 1978 Essay Writers Facebook Page
- Access to data
- Presentations and events
- Publications and publicity
- Ray Pahl's Sheppey Studies
- Links
- Contact us

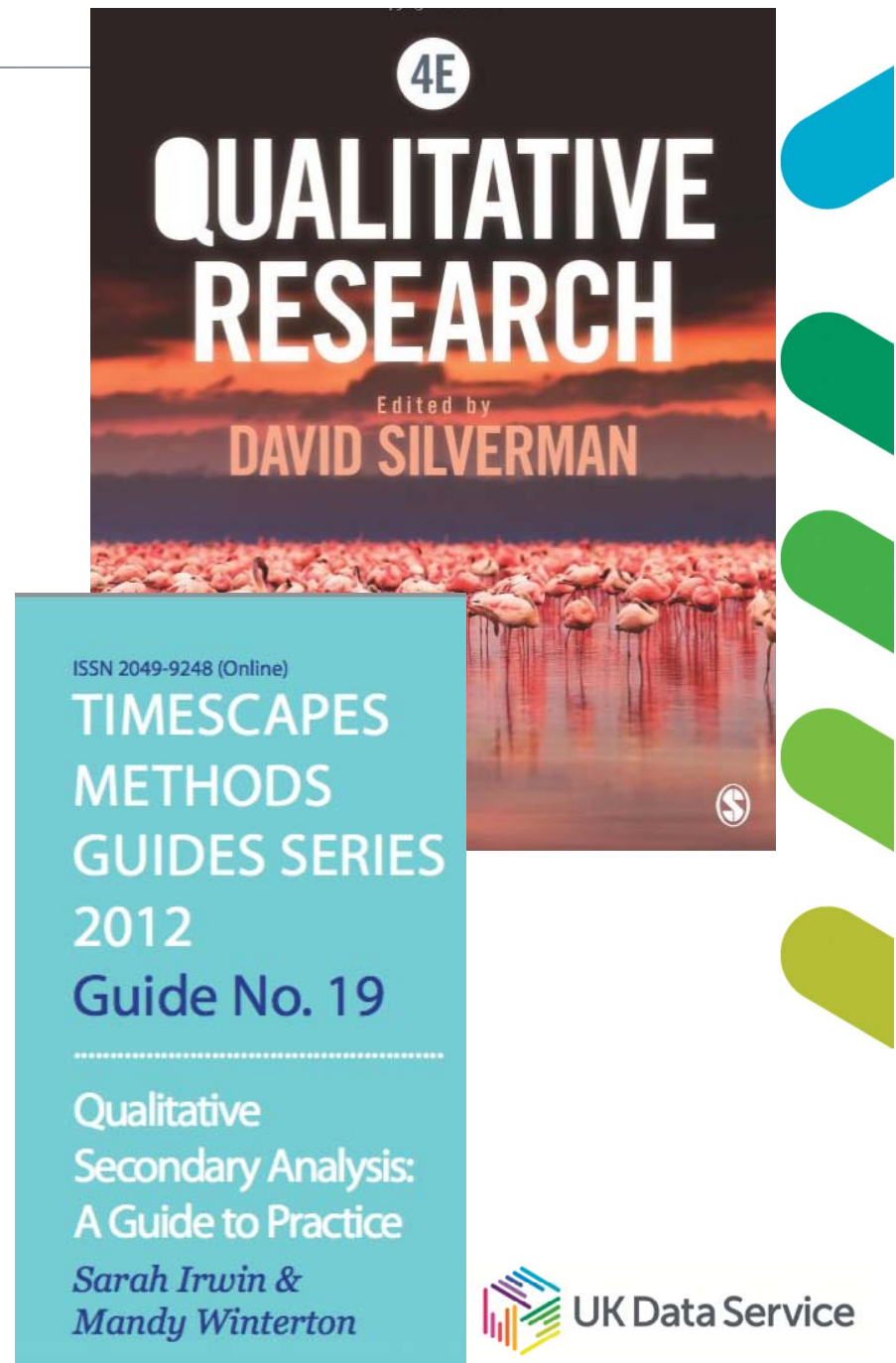
<http://www.livingandworkingonsheppey.co.uk/>

School Leavers Study: publications

- Lyon, Dawn, and Graham Crow (2012) 'The challenges and opportunities of re-studying community on Sheppey: young people's imagined futures', *Sociological Review* 60: 498-517.
- Lyon, Dawn, Bethany Morgan, and Graham Crow (2012) 'Working with material from the Sheppey archive', *International Journal of Social Research Methodology* 15(4): 301-309.
- Weddell, Emma, Graham Crow and Dawn Lyon (2012) 'Imagining the Future, What can the aspirations of school-leavers in 1978 and 2010 tell us about the changing nature of society?' *Sociology Review*
- Crow, G. and N. Takeda (2011) 'Ray Pahl's Sociological Career: Fifty Years of Impact', *Sociological Research Online*, 16 (3)
11: <http://www.socresonline.org.uk/16/3/11.html>
- Crow, G., Hatton, P., Lyon, D. and Strangleman, T. (2009) 'New divisions of labour?: Comparative thoughts on the current recession', *Sociological Research Online* vol14 issue 2/3 <http://www.socresonline.org.uk/14/2/10.html>


Getting started

- Orient yourself to the original research project
 - Documentation and metadata
- Understand the structure of the original data
 - Contexts – at 3 levels
 - Sampling and recruitment
- Become familiar with the project data as a whole
 - Logic of subsampling if volume prohibits reading it all
 - Both inductive and deductive strategies can work



Publications and other resources for reusing data

UK Data Service




- Advice and training
- Guides
- Video tutorials
- Data in use
- Citing data
- Secure Lab
- Teaching with data
- Student resources
- Secondary analysis
 - SDAI
 - Reusing qualitative data
 - Reusing quantitative data

About us Get data **Use data** Manage data Deposit data


Home > Use data > Secondary analysis > Reusing qualitative data

Reusing qualitative data

"A unique opportunity to study the raw materials of the recent or more distant past"



Reuse guide Reuse articles Teaching secondary analysis

SHARE 

Since the mid-1990s we have witnessed a growing body of knowledge and practical guidance on reusing qualitative data, sparked in the UK by the funding of Qualidata by the ESRC. We provide some insight into the ethical, methodological and epistemological issues, offer practical ways to get started, and showcase scholars' and teachers' creative use of secondary data.

RESOURCES ON REUSING QUALITATIVE DATA

Our [short guide](#) on reusing qualitative data

A [bibliography](#) of special collections and important articles on both reusing and sharing

<http://ukdataservice.ac.uk/use-data/secondary-analysis/reusing-qualitative-data.aspx>

Find data: Key data and search in *Data*

The screenshot displays the UK Data Service website interface. The top navigation bar includes links for 'About us', 'Get data', 'Use data', and 'Manage'. A secondary navigation bar on the right contains 'Login / Register', 'Help', and 'Accessibility'. The left sidebar lists various data categories: 'About our data', 'Key data' (selected), 'Data by theme', 'Data by geography', 'Open data', 'How to access', 'Other providers', 'Explore online', 'Data access policy', and 'Thesauri'. The main content area is titled 'Key data' and features a search bar with the query 'food'. Below the search bar, it shows 'STUDIES (806)' and 'SERIES (16)'. A date filter is set from 1753 to 2018, and the results are displayed in a table. The search results section indicates 'Displaying 1 - 10 of 806 results for 'food''. The bottom of the page shows the UK Data Service logo and name.

UK Data Service

About us Get data Use data Manage

Home > Discover data > Key data

Key data

Browse our most popular

UK surveys Cross-national surveys

Business microdata Qualitative and mixed methods data

Qualitative data is non-quantitative, often in the form of transcripts, diaries, and audio-visual recordings. It can be used to explore the experiences and perspectives of individuals and groups, and to combine qualitative data with quantitative data to provide a more comprehensive understanding of a topic.

• Discover qualitative data

• Discover case studies

Affluent Worker in the 1950s

The 'Affluent Worker' project is a study of the class embourgeoisement process, focusing on the experiences of wage earners in three manufacturing industries in the 1950s.

Family Life and Work

This study comprises 537 interviews with people from a cross-national sample of 10 countries, conducted on the basis of the first national oral history project in the United Kingdom.

Search for: food

Variable and question

STUDIES (806) SERIES (16)

Date from: 1753 Date to: 2018

Refine date

Displaying 1 - 10 of 806 results for 'food'

Results per page: 10 Sort by: Relevance

UK Data Service

<http://ukdataservice.ac.uk/get-data/key-data/qualitative-and-mixed-methods-data.aspx>

UK Data Service Discover



Discover

Variable and question bank

● QualiBank

Collection title +

Resource type +

Open / Closed +

Date +

Sex +

Age group +

Socio-
economic
status +

Region +

[About us](#)

[Get data](#)

[Use data](#)

[Manage data](#)

[Deposit data](#)

[News and events](#)

Discover > QualiBank

QualiBank

Search and browse qualitative surveys, interviews and open-ended questions.

🔍 Search our qualitative data and related resources

GO

[Reset filters](#)

[Clear search](#)

☒ Auto-complete

[Copyright](#)

[Collections](#)

[Help](#)

Discover

Variable and question bank

QualiBank

Collection title +

Resource type +

Open / Closed +

Date +

Sex +

Age group +

Socio-economic status +

Region +

Search and browse qualitative surveys, interviews and open-ended questions.

typhoid

GO

Reset filters

Clear search

☒ Auto-complete

Copyright

Collections

Help

Extract

Image

File

Audio

Results per page: 10

Displaying 1-10 of 20 results

1



Report: 1st Armoured Division Morale Report for period 1 May - 30 Sep 47
SN7465 Morale and Home Intelligence Reports, 1941-1949

... at release was joyfully received by those effected. Pre-release and resettlement courses are popular. 12. Health On the whole h
very good. Amongst tps in PALESTINE there have been 8 cases of Infantile Paralysis (2 fatal; 4 cases of **Typhoid** (1 fatal) end a s
number...

[Access this collection from](#)

Report: Morale Report for the week of March 21 - March 27 1943
SN7465 Morale and Home Intelligence Reports, 1941-1949

... at the amount of rheumatic fever he has seen as well as a few cases of coronary thrombosis. There is mention made of the dea
Lieutenant from **typhoid** fever. Under the general category of health, there is specific mention of the necessity for dental care, (Fil



Discover

Variable and question
bank

● QualiBank

Create citation

[About us](#)

[Get data](#)

[Use data](#)

[Manage data](#)

[Deposit data](#)

[News an](#)

Discover > QualiBank > Document

Interview with Mrs. Omison

[External resources](#) | [Collection documentation](#)

[Access thi](#)

DETAILS

Collection ID (SN): 2000
 Title: [Family Life and Work Experience Before 1918, 1870-1973](#)
 Principal investigator: Thompson, P., University of Essex. Department of Sociology
 Lummis, T., University of Essex. Department of Sociology
 Sex: Female
 Age group: 75-84
 Socio-economic status: Routine
 Region: North West
 Licence: [Creative Commons Attribution 4.0 International License](#)



[+ Additional metadata](#)

INTERVIEW TRANSCRIPT

R: 149 Lee Gate, Harwood, Bolton.
 I: And your marital status? You're a widow, are you?
 D: Yes

R: Oh yes, that was done. The Maypole dances.

I: [Where did they have the Maypole?](#)

R: Well of course I remember St. Osyth Priory - I lived just inside St. Osyth then you see, my father and mother moved from Angers Green to - I told you about the barracks - we moved there when I was - not more than about two I suppose.

I: [And you lived on there for quite a while didn't you?](#)

R: I lived there 'til I got married. Yes.

I: [Why did they make that move?](#)

R: Well, of course they moved - lived in a house at Angers Green, I don't know who that belonged to but then of course as these barrack cottages became vacant I mean the farmer usually put his men in them you see. That was why my father moved 'cos-;

I: [It wasn't because he changed his employer?](#)

R: Oh no, the house went with the job you see.

I: [And at St. Osyth in Priory they used to have a Mayday do did they?](#)

R: Oh yes. Well they had - a lot of big do's there when I was a kid, I mean, I belonged to the Sunday school, I used to have all their treats there - their summer treats you know. And of course the woman then who had it - was a very rich woman you see those days, I mean they had about seventeen gardeners and - and seventeen or eighteen indoor staff.

RELATED RESOURCES

Related external resources

[XML TEI Transcript](#)

[XML QuDEx metadata](#)

[Web Resource: Abstract of the Edwardians book](#)

Related audio

[Audio extract from Interview with Mr. Keble](#)

[Audio extract from Interview with Mr Keble](#)

Related images

[Image relating to the Edwardians](#)

I: Did he ever look after you while your mother went out?
R: No, no. me mother never had a chance to go out. If there was anything on at the school and we took part in never could go.

Cancel
1 extract selected

RETRIEVE CITATION

Citation

A unique citation reference has been generated based on your selection.

Thompson, P., University of Essex. Department of Sociology, Lummis, T.,
University of Essex. Department of Sociology: "Interview with Mrs. Omison"
in "Family Life and Work Experience Before 1918, 1870-1973" 7, UK Data Service
[distributor], 2009-05-12, SN:2000, Para. 186. <http://dx.doi.org/10.5255/UKDA-SN-2000-1>, <https://discover.ukdataservice.ac.uk/QualiBank/Document/?>

Select the text above

You can copy and paste this citation as required in your outputs. This citation includes a URL which will link directly back to this page, where the cited text will be highlighted.

Show preview of citation URL in action

Forthcoming Events

- 6 December: Webinar: Data management basics
- 6 December: Understanding Society Conference: Combining Biological and Social Data (London)
- 11 December: Webinar: Guided walk through ReShare
- 20 February 2019: Assessing Data Quality and Disclosure Risk in Numeric Data (London School of Economics)

Questions

UK Data Service
University of Essex
Wivenhoe Park
Colchester
Essex CO4 3SQ

Advice for new users

<http://ukdataservice.ac.uk/help/new-user.aspx>

FAQs

<http://ukdataservice.ac.uk/help/faq.aspx>

Reusing qualitative data

<http://ukdataservice.ac.uk/use-data/secondary-analysis/reusing-qualitative-data.aspx>

To follow UK Data Service on Twitter:
@UKDataService

